



Australian Government

# VET FEE-HELP

## Annual Statistical Report 2017

ISBN

978-1-76051-554-6 [PDF]

978-1-76051-555-3 [DOCX]



With the exception of the Commonwealth Coat of Arms, the Department's logo, any material protected by a trade mark and where otherwise noted all material presented in this document is provided under a [Creative Commons Attribution 4.0 International](http://creativecommons.org/licenses/by/3.0/au/) (<http://creativecommons.org/licenses/by/3.0/au/>) licence.

The details of the relevant licence conditions are available on the Creative Commons website (accessible using the links provided) as is the full legal code for the [CC BY 4.0 International](http://creativecommons.org/licenses/by/4.0/legalcode) (<http://creativecommons.org/licenses/by/4.0/legalcode>).

The document must be attributed as the VFH Annual Statistical Report 2017

## Introduction

The report focuses on students whose tuition fees were paid (whether in whole or in part) using a VET FEE-HELP Loan (VFH) in 2017. This report refers to these students as **VFH-assisted students**.

Information relating to students who have not accessed a VET FEE-HELP Loan (or non-VFH-assisted students) is not included in this report.

This report covers the whole of calendar year 2017, reported *as at 4 May 2018*.

## Background

On 31 December 2016, VET FEE-HELP scheme closed for all new students, and was replaced by the VET Student Loans program which commenced on 1 January 2017.

Students engaged in study who accessed VET FEE-HELP for their course prior to 1 January 2017 had the choice to opt in to continue their study with access to VET FEE-HELP until 31 December 2017, with students able to apply to continue beyond 2017 in exceptional circumstances. These students are able to continue to use VET FEE-HELP to meet the cost of their tuition for diploma level and above vocational education and training qualifications. Detailed information regarding the grandfathering arrangements can be found in the *Information for VET FEE-HELP Grandfathering* fact sheet (<https://docs.education.gov.au/node/43471>).

## VET FEE-HELP providers

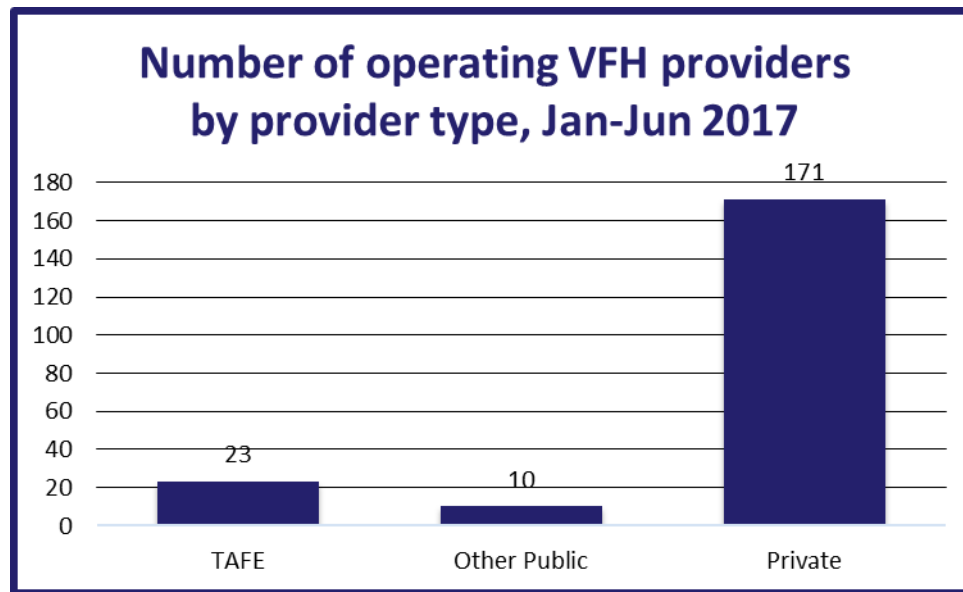
In 2017, 204 registered training organisations (RTOs) operated as VET FEE-HELP providers.

The 204 VET FEE-HELP providers comprised:

- 23 TAFEs
- 10 other public organisations (including Table A providers), and
- 171 private providers.

The numbers of providers in these different categories is shown in Figure 1.

**Figure 1: VET FEE-HELP providers by type, 2017**



The names of each of the 204 VET FEE-HELP providers that operated in 2017 are provided in Table 1.

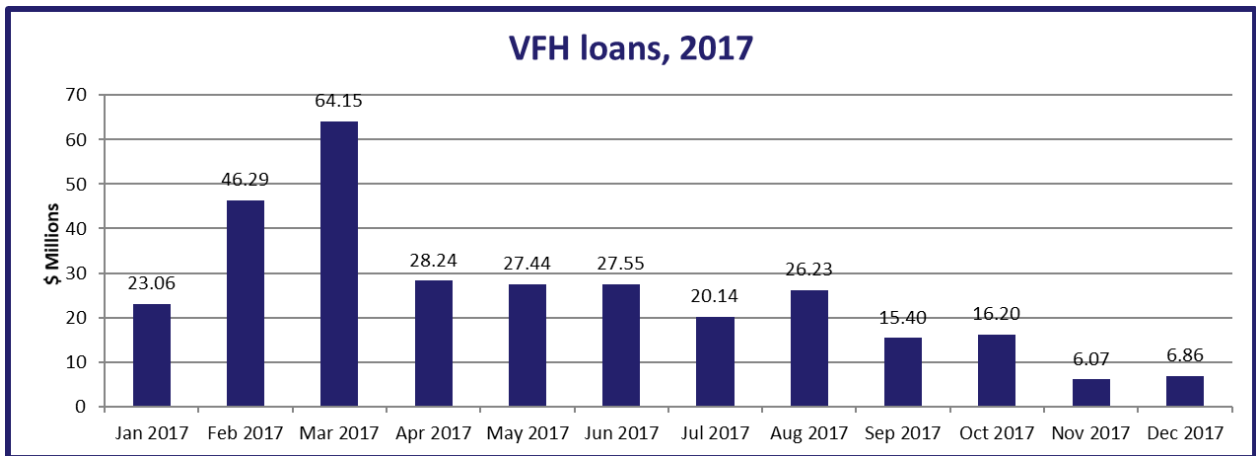
## Value of VET FEE-HELP Loans

The amount of VET FEE-HELP paid to providers for 2017, was \$307,630,755. A breakdown by course provider is provided in Table 1.

Figure 2 shows the value of VET FEE-HELP loans paid for study undertaken during each month in 2017<sup>1</sup>.

<sup>1</sup> Study undertaken during each month is defined as a unit of study where the census day is in that month, regardless of when payment was made.

**Figure 2: Value of VET FEE-HELP paid for study undertaken in each month of 2017**

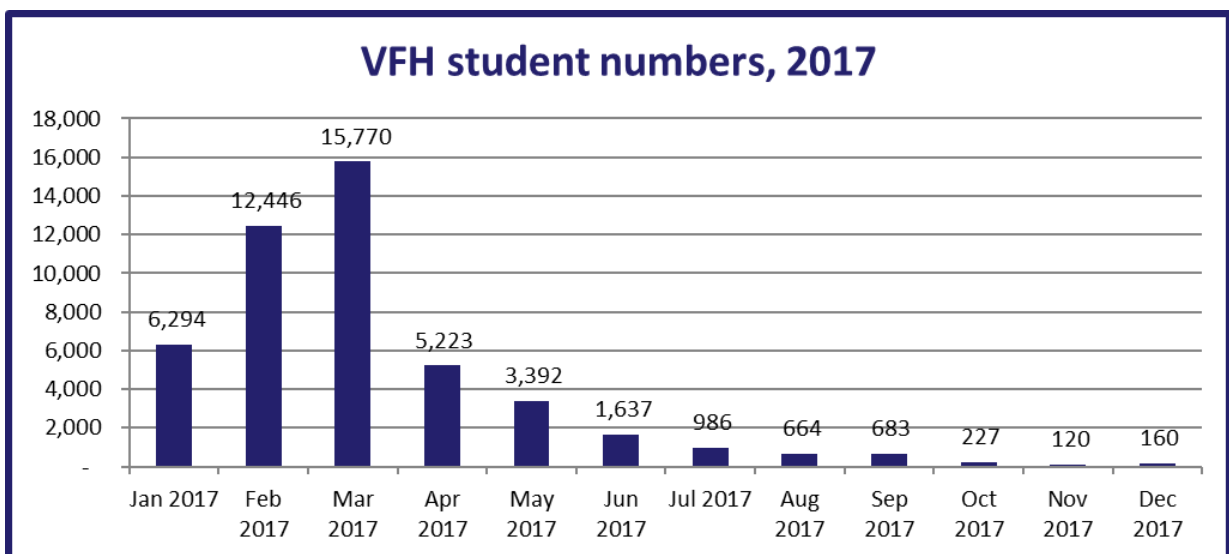


### VFH-assisted students

A total of 47,602 students undertook a unit of study with a census date in 2017, where the unit being studied was VFH-assisted (Table 1).

Figure 3 shows, by month, when these 47,602 students had their first VFH-assisted unit of study in 2017.

**Figure 3: VFH-assisted student numbers, first time VFH-assisted in 2017**



The number of students with their first VFH-assisted unit peaked in March 2017, a month in which many providers set census dates for the first time in the calendar year. The student numbers decrease each subsequent month, reflecting the closure of the VET FEE-HELP scheme and grandfathering arrangements that were implemented at the start of the 2017 year. It should be noted that some students may have had a VFH-assisted unit of study in more than one month. This would occur, for example, if they studied more than one unit in the same course, or studied in more than one course. These students are represented only the first time they accessed VET FEE-HELP in 2017.

A breakdown of students by provider is shown in Table 1. However, the total of 47,602 only counts each student once, regardless of how many providers they were studying at, or how many courses they were studying under VFH.

## Completions

In 2017, 17,879 students are recorded as having completed 18,028 courses based on data reported for the year, as shown in Table 1.

As all VFH-assisted students reported as having studied in 2017 had commenced their courses prior to 31 December 2017, the proportion of VFH-assisted students completing a course was much higher than that shown for the VET Student Loans program that commenced on 1 January 2017. To enable a meaningful comparison to be made of the completion statistics across the two programs, both annual statistical reports include information on unit of study completion rates (provided in Table 1 in both reports).

A course consists of a number of units of study. Thus, reporting on unit of study completion rates provides an alternative way of presenting information on students' progression through their courses.

The unit of study completion rate is the proportion of units of study that were passed, of the total units of study undertaken, with units of study measured in Equivalent Full Time Student Load (EFTSL) rather than student numbers. Units of study undertaken are units that providers have reported as being withdrawn from, failed or successfully completed, as well as units for which providers have failed to report a completion status.

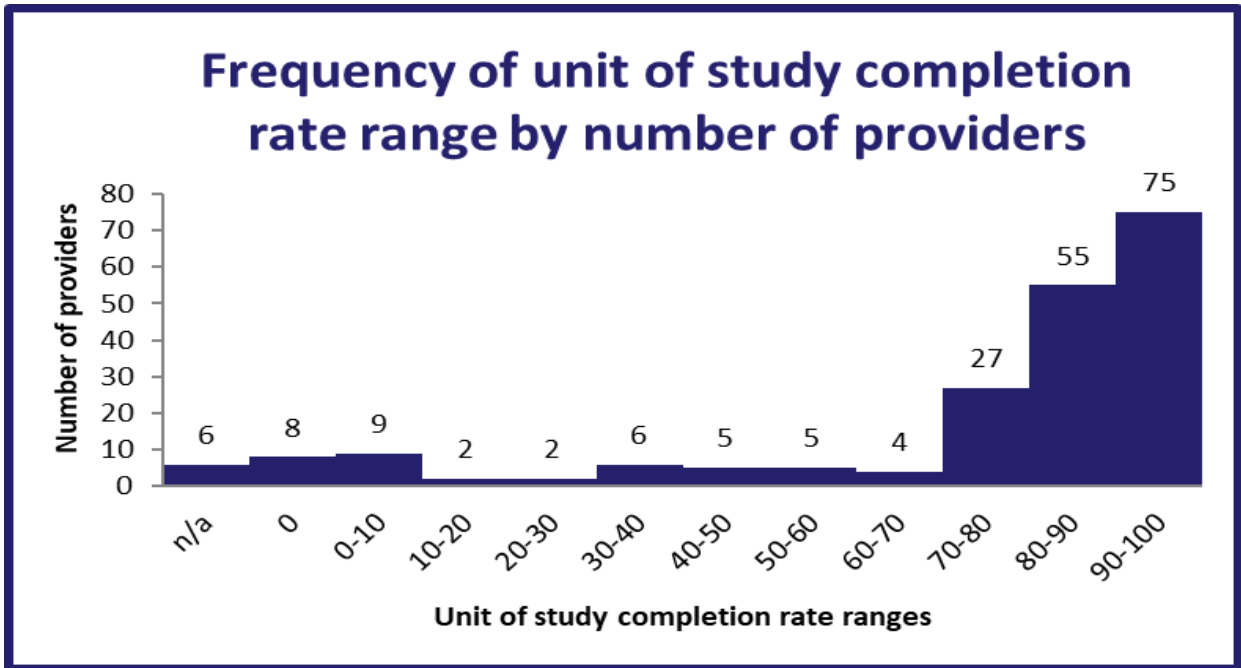
The overall unit of study completion rate for VFH-assisted students is 71.5 per cent for 2017. This is an improvement upon the 2016 VET FEE-HELP unit of study completion rate of 65.3 per cent, but still significantly lower than the 82.4 per cent completion rate reported in the *VET Student Loans Annual Statistical Report 2017*<sup>2</sup>.

Figure 4 shows a histogram of unit of study completion rates for 2017. Of the 204 VET FEE-HELP providers that had students who accessed VET FEE-HELP in 2017, eight (four per cent) had a unit of study completion rate of zero, with 157 (77 per cent) having unit of study completion rates above 70 per cent. A unit of study completion rate could not be calculated for six providers (three per cent) that reported all of their students' units of study as being still in progress.

---

<sup>2</sup> Units reported as still in progress are excluded from the unit of study completion rate calculation. Providers report the final completion status of such units once completed (successfully or otherwise). A unit of study will generally include multiple units of competency (subjects). Unit of study completion rates therefore cannot be compared to subject load pass rates published by the National Centre for Vocational Education Research.

Figure 4: Histogram of VFH-assisted student unit of study completion rates, 2017



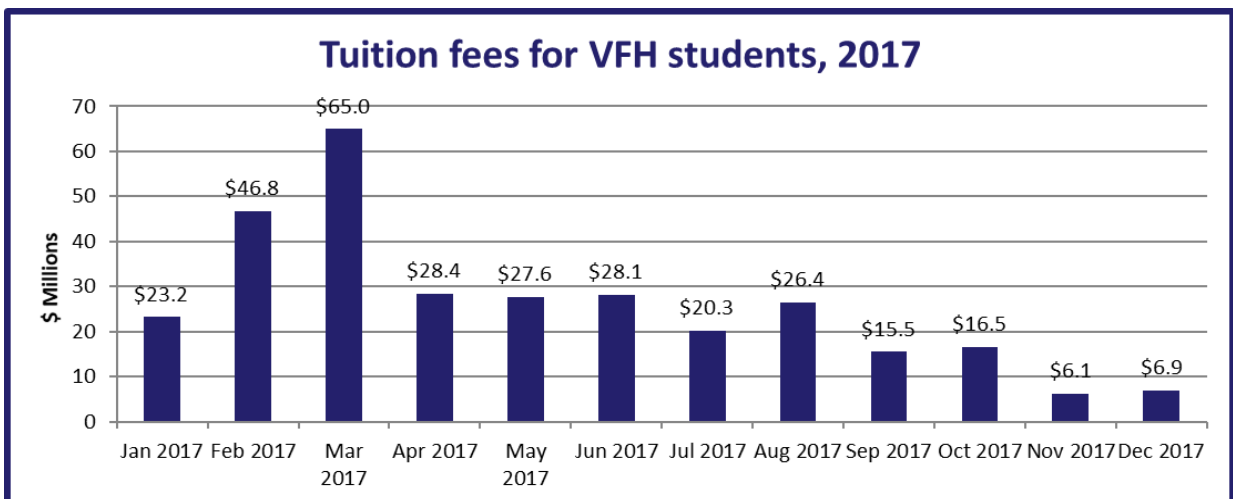
### Tuition fees

In 2017, VFH-assisted students were charged a total of \$310,788,308 in course tuition fees. VFH-assisted students paid \$3,021,385 of their tuition fees up front in addition to the amounts paid in VET FEE-HELP loans.

Figure 5 provides a breakdown of tuition fees charged to VFH-assisted students in 2017, by month.

Tuition fees charged peaked in March 2017, commensurate with the peaks in value of loans paid for study undertaken and student numbers.

Figure 5: Tuition fees charged to VFH-assisted students by month, 2017



## Additional VET student loan provider and course information

Tables 2 to 5 in the Appendix, and Table 6, an additional table provided as a separate Excel spreadsheet, provide additional information on approved course providers and the eligible courses they offered in 2017.

In particular, these tables rank providers in order of VFH-assisted students (Table 2), value of VET FEE-HELP loans paid (Table 3), and rank courses in order of VFH-assisted students (Table 4) and in order of value of VET FEE-HELP loans paid (Table 5).

These tables also provide the following:

- VFH-assisted student numbers (Table 2 and 3)
- course enrolment numbers<sup>3</sup> (Tables 4 and 5)
- Equivalent Full-Time Student Load (EFTSL) by provider and by course
- tuition fees charged
- the amount of the tuition fees paid up-front (paid directly to the provider by the student, rather than deferred through a VET FEE-HELP loan)
- the value of VET FEE-HELP loans
- tuition fees per student (Tables 2 and 3)
- tuition fees per course enrolment (Tables 4 and 5)
- tuition fees per EFTSL
- loan amount per student (Tables 2 and 3)
- loan amount per course enrolment (Tables 4 and 5)
- loan amount per EFTSL
- enrolments, loans, tuition fees, students completing courses and unit of study completion rates by provider and course (Table 6).

Two of the top 10 providers ranked by value of loans paid in Table 3 were public providers (TAFEs/Table A universities) and in terms of student numbers, four of the top ten providers were public providers (Table 2). By comparison, nine of the top 10 VET Student Loans approved course providers were public, both in terms of course enrolments and the value of VET Student Loans paid.

The Diploma of Nursing is the highest-ranking course both in terms of VFH-assisted course enrolments and value of loans paid, as shown in Tables 4 and 5, respectively. Nursing and community services qualifications are still popular with VFH-assisted students, as they were in previous years.

The Diploma of Business (now 5<sup>th</sup> in terms of course enrolment numbers) is no longer the most popular course as it was in 2016. The Diploma of Leadership and Management's relative popularity has also fallen, dropping three places from 4<sup>th</sup> to 7<sup>th</sup> place in terms of enrolment numbers.

---

<sup>3</sup> Students can enrol in more than one course, so enrolment numbers will always be greater than or equal to student numbers.



## Appendix: List of Tables

- **Table 1:** VET FEE-HELP information relating to operation of the VET FEE-HELP program in 2017
- **Table 2:** VFH providers ordered by VFH-assisted student numbers in 2017
- **Table 3:** VFH providers ordered by value of VFH loans paid in 2017
- **Table 4:** VFH courses ordered by VFH-assisted enrolments in 2017
- **Table 5:** VFH courses ordered by VFH loans paid in 2017
- **Table 6:** VFH provider course details in 2017 (separate table in excel spreadsheet)

**Table 1: VET FEE-HELP information relating to operation of the VET FEE-HELP program in 2017**

Rank	Provider ID	Provider name	Provider Type	Students	Loans paid	Tuition fees charged	Students completing courses	Unit of study completion rate (%)
1	7124	Academy of Information Technology Pty Ltd	Private	88	\$483,293	\$483,293	10	98.2
2	7403	Access Group Training Pty Limited	Private	734	\$4,771,900	\$4,771,900	175	75.7
3	7274	Access Training Institute Pty Ltd	Private	318	\$2,244,873	\$2,244,873	<5	2.6
4	7158	Accredited Courses Australia Pty Ltd	Private	46	\$777,975	\$777,975	23	100.0
5	7039	ACTE Pty Ltd	Private	1,528	\$9,909,555	\$9,909,555	181	17.4
6	7340	Actors College of Theatre & Television Pty Ltd	Private	56	\$819,000	\$819,000	38	0.0
7	7425	Adamattrin Pty Ltd as Trustee for Mesaric Family Trust	Private	11	\$76,834	\$76,834	<5	81.8
8	7405	Advanced Education Australia Pty Ltd	Private	7	\$73,400	\$73,400	<5	100.0
9	7407	Air Gold Coast Pty. Ltd.	Private	32	\$908,936	\$908,936	13	100.0
10	7517	Alderdice & Associates Pty. Limited ATF Alderdice & Associates Trust	Private	78	\$742,000	\$742,000	9	49.1
11	7628	Alertforce Pty Ltd	Private	8	\$42,227	\$42,227	0	n/a
12	4407	Alphacrucis College Limited	Private	125	\$365,800	\$366,130	76	83.3
13	7449	Anglican Church Property Trust Diocese of Canberra & Goulburn	Other Public	12	\$44,850	\$44,850	<5	60.0
14	7141	Asia Pacific Training Institute Pty. Ltd.	Private	18	\$111,282	\$111,282	<5	7.0
15	7819	Atkinson Training and Development Pty Limited	Private	<5	\$5,564	\$5,564	<5	n/a
16	7701	Aurora Training Institute Pty Ltd	Private	65	\$475,013	\$475,013	20	48.2
17	7541	Australasian Beauty Therapy Academy Pty Ltd	Private	15	\$53,100	\$53,100	15	100.0
18	7345	Australia Moreton Education Group Pty Ltd	Private	7	\$32,787	\$32,787	<5	67.2
19	7108	Australian Academy of Vocational Education and Trades Pty Ltd	Private	5	\$39,258	\$39,258	0	75.0
20	7092	Australian Careers Business College Pty Ltd	Private	<5	\$1,250	\$1,250	0	n/a
21	7504	Australian Careers Institute Pty Ltd	Private	68	\$376,046	\$376,046	0	n/a
22	3006	Australian Catholic University Limited	Private	131	\$441,681	\$491,515	101	96.8
23	7030	Australian College of Applied Education Pty Ltd	Private	<5	\$3,050	\$3,050	0	100.0
24	7423	Australian College of Commerce & Management Pty Ltd	Private	19	\$40,107	\$40,107	7	80.0
25	7363	Australian College of Event Management Pty Ltd	Private	28	\$129,063	\$131,250	24	85.7

Rank	Provider ID	Provider name	Provider Type	Students	Loans paid	Tuition fees charged	Students completing courses	Unit of study completion rate (%)
26	7568	Australian College of Finance Pty Limited	Private	47	\$373,933	\$373,933	0	1.2
27	7756	Australian College of Fitness and Bodywork Pty Ltd	Private	41	\$118,953	\$125,308	13	71.1
28	7189	Australian College of Health & Fitness Pty Ltd	Private	70	\$172,297	\$172,297	30	83.6
29	7175	Australian College of Ministries	Private	<5	\$2,320	\$2,320	0	n/a
30	4361	Australian College of Natural Medicine Pty Ltd	Private	98	\$516,411	\$516,411	76	92.7
31	7026	Australian College of Sports Therapy Pty Ltd	Private	45	\$160,194	\$161,927	0	0.0
32	7012	Australian Education Group Pty Ltd	Private	295	\$4,523,000	\$4,523,000	10	45.7
33	7155	Australian Institute of Family Counselling Ltd	Private	297	\$1,467,224	\$1,467,868	169	93.9
34	7321	Australian Institute of Fashion Design Pty Ltd	Private	130	\$1,020,063	\$1,020,063	107	94.0
35	7536	Australian Institute of Fitness Pty Ltd	Private	92	\$639,881	\$642,881	72	79.6
36	7685	Australian Institute of Higher and Further Education Pty Ltd	Private	67	\$400,768	\$400,768	12	99.0
37	4458	Australian Institute of Management Education and Training Pty Limited	Private	51	\$252,449	\$252,449	7	47.4
38	7352	Australian Institute of Personal Trainers Pty Ltd	Private	1,539	\$8,761,515	\$8,761,515	51	2.2
39	7163	Australian National Memorial Theatre Limited	Private	18	\$155,083	\$155,083	10	97.2
40	7229	Australian Nursing & Midwifery Federation (SA Branch)	Private	64	\$236,007	\$236,007	50	82.9
41	7553	Australian Salesmasters Training Co. Pty Limited	Private	14	\$91,000	\$91,000	5	67.9
42	7646	Australian Skills Group Pty Ltd	Private	<5	\$20,000	\$20,000	<5	100.0
43	7143	Australian Wings Academy Pty Ltd	Private	46	\$1,682,482	\$1,702,729	27	100.0
44	7396	Australis College Pty Ltd	Private	532	\$3,646,757	\$3,705,252	93	24.2
45	2252	Avondale College Limited	Private	6	\$82,868	\$82,968	6	100.0
46	7009	Baptist Business College Ltd	Private	64	\$437,686	\$437,686	49	75.8
47	7094	Basair Australia Pty Ltd	Private	120	\$3,918,273	\$3,946,726	35	89.5
48	7203	BCA National Training Group Pty Ltd	Private	523	\$4,186,924	\$4,326,486	214	64.4
49	7144	Benchmark Resources Pty Ltd	Private	13	\$16,101	\$16,101	8	100.0
50	7082	Bendigo Kangan Institute	TAFE	332	\$1,211,297	\$1,227,662	12	84.3
51	4366	Box Hill Institute	TAFE	442	\$5,636,169	\$5,641,327	240	84.5
52	7360	Bruce Hartwig Flying School Pty Ltd	Private	65	\$2,594,235	\$2,637,417	9	4.6
53	7223	CALAM Training Ltd	Private	37	\$222,360	\$222,360	20	77.3
54	4406	Canberra Institute of Technology	TAFE	116	\$224,710	\$229,737	88	86.6
55	7253	Careers Australia Education Institute Pty Ltd	Private	2,137	\$12,528,429	\$12,848,591	69	78.7
56	2200	Central Queensland University	Other Public	262	\$883,900	\$884,020	118	84.2
57	8073	Central Regional TAFE	TAFE	53	\$215,044	\$215,044	38	83.6
58	7206	Century Group Pty Ltd	Private	<5	\$17,000	\$17,000	0	100.0
59	3001	Charles Darwin University	Other Public	35	\$70,977	\$70,977	12	74.9
60	7086	Charlton Brown Pty Ltd	Private	180	\$538,135	\$538,135	117	99.2
61	7073	Chisholm Institute of Technical and Further Education	TAFE	790	\$2,543,886	\$2,544,917	476	87.2
62	7377	Churchill Education Pty Ltd as trustee for Decelle Investment Trust	Private	274	\$1,799,276	\$1,799,276	58	35.3
63	7429	CMA Training Group Pty Ltd	Private	59	\$237,712	\$237,712	36	88.7
64	7088	College of Complementary Medicine NSW Pty Ltd	Private	184	\$2,230,654	\$2,291,116	29	88.7
65	7139	Community College Gippsland Ltd	Private	<5	\$1,690	\$1,690	<5	100.0

Rank	Provider ID	Provider name	Provider Type	Students	Loans paid	Tuition fees charged	Students completing courses	Unit of study completion rate (%)
66	7276	Contour Systems Pty Ltd	Private	60	\$394,194	\$394,194	5	30.5
67	7463	Cronin Pty Ltd	Private	17	\$99,500	\$99,500	8	84.0
68	7213	Dazzle-M Pty Ltd	Private	34	\$166,733	\$169,000	0	0.0
69	7742	Demi International Beauty Academy Pty Ltd	Private	146	\$1,264,320	\$1,269,588	132	97.9
70	7535	Department of Training and Workforce Development	TAFE	<5	\$955	\$955	0	100.0
71	7111	Design College Australia Pty Ltd	Private	8	\$32,631	\$40,932	8	100.0
72	7347	Design Schools Australia Pty Ltd	Private	43	\$341,015	\$341,015	33	93.1
73	7600	Elite Training & Development Pty Ltd	Private	41	\$286,200	\$286,200	37	94.4
74	7020	Ella Bache College Pty Ltd	Private	100	\$680,529	\$693,947	14	35.7
75	7159	Emma's Secret Investments Pty Ltd	Private	197	\$1,549,063	\$1,549,063	110	96.0
76	7307	Empowerment Options Pty Ltd ATF Empowerment Options Family Trust	Private	115	\$493,104	\$493,104	22	100.0
77	7262	EQUALS International (Aust) Pty Ltd	Private	53	\$171,822	\$176,337	19	84.0
78	7068	Federation Training	TAFE	160	\$486,524	\$487,113	101	90.0
79	2154	Federation University Australia	Other Public	131	\$454,292	\$454,342	73	87.6
80	7172	Flight Training Adelaide Pty Ltd	Private	48	\$1,408,576	\$1,511,640	33	93.1
81	7230	Foundation for Education & Training Ltd	Private	8	\$54,911	\$62,081	<5	76.8
82	7566	Fox Endeavours Pty Ltd	Private	<5	\$7,758	\$29,362	0	100.0
83	7365	Franklyn Scholar (Australia) Pty Ltd	Private	36	\$238,800	\$238,800	0	0.0
84	7729	Global Training Institute Pty Ltd	Private	40	\$487,625	\$487,625	11	89.6
85	7049	Golf Education Australia Pty Ltd	Private	51	\$805,400	\$805,400	0	98.5
86	4372	Gordon Institute of TAFE	TAFE	197	\$607,416	\$608,053	110	89.3
87	7145	Goulburn Ovens Institute of TAFE	TAFE	292	\$1,214,667	\$1,215,777	152	90.8
88	7370	GP Links Wide Bay Ltd	Private	<5	\$12,150	\$12,150	<5	100.0
89	4341	Harvest Bible College Inc	Private	124	\$671,975	\$671,975	64	75.1
90	7503	Harvest Education Technical College Pty. Ltd. as trustee for the HETC Trust	Private	567	\$7,308,065	\$7,314,331	14	1.2
91	7306	Health Careers International Pty Ltd	Private	156	\$954,699	\$1,397,427	45	82.9
92	7251	Health Skills Australia Pty Ltd	Private	510	\$3,316,188	\$4,469,952	273	87.0
93	7245	Holmes Commercial Colleges (Melbourne) Ltd	Private	8	\$108,545	\$111,000	<5	83.7
94	4383	Holmesglen Institute of TAFE	TAFE	770	\$2,559,426	\$2,564,175	527	87.8
95	7047	Hope of the Gold Coast Ltd	Private	53	\$154,902	\$154,902	29	96.0
96	7585	House of Learning Pty Ltd	Private	<5	\$24,920	\$24,920	<5	100.0
97	7441	Impact Training Centre Ltd	Private	<5	\$11,133	\$11,133	<5	56.0
98	7663	Innovative Business Training Pty Ltd	Private	<5	\$16,080	\$16,080	<5	35.4
99	7023	International Film School Sydney Pty Ltd	Private	54	\$1,327,490	\$1,339,000	40	100.0
100	7495	International Screen Academy Pty Limited	Private	21	\$321,800	\$321,800	20	96.8
101	7401	Jigsaw Consulting Group Pty Ltd	Private	34	\$239,622	\$239,622	<5	100.0
102	7280	Job Training Institute Pty Ltd	Private	18	\$132,019	\$132,019	14	95.7
103	7058	Jschool: Journalism Education & Training Pty Ltd	Private	17	\$160,089	\$160,089	6	80.6
104	7027	Kal Multimedia Training Pty Ltd	Private	15	\$51,372	\$51,372	11	81.9
105	7661	Kiama Community College Incorporated	Private	8	\$16,128	\$16,128	<5	59.9

Rank	Provider ID	Provider name	Provider Type	Students	Loans paid	Tuition fees charged	Students completing courses	Unit of study completion rate (%)
106	7244	Kirana Training Pty Ltd	Private	226	\$1,260,280	\$1,260,283	<5	7.6
107	7380	Kreate Pty Ltd	Private	30	\$63,838	\$63,838	17	93.4
108	7325	LaTrobe International Galleries Pty. Ltd.	Private	25	\$244,270	\$244,270	11	87.9
109	7591	Life Coaching Institute (Aust) Pty Ltd ATF The Life Coaching Institute Trust	Private	1,047	\$5,676,513	\$5,676,513	532	78.2
110	7473	LTT Group Pty Ltd	Private	13	\$64,009	\$64,009	9	84.6
111	7521	Malekhu Investments Pty. Ltd.	Private	253	\$2,175,224	\$2,177,810	90	88.1
112	7394	Management Consultancy International Pty Limited	Private	511	\$3,104,285	\$3,120,638	33	4.5
113	7093	Marr Mooditj Training	Private	18	\$69,391	\$69,490	0	95.0
114	7235	Mater Education Limited	Private	164	\$1,282,184	\$1,288,889	134	97.3
115	7036	MEGT (Australia) Ltd.	Private	22	\$124,967	\$124,967	14	82.1
116	7590	Melbourne College of Hairdressing Beauty Therapy & Natural Medicine Pty Ltd	Private	23	\$173,040	\$173,040	14	73.3
117	4363	Melbourne Polytechnic	TAFE	294	\$1,060,098	\$1,060,098	136	83.0
118	7052	Melbourne Rudolf Steiner Seminar Ltd	Private	22	\$195,050	\$195,050	21	100.0
119	7333	Menzies Institute of Technology Pty Ltd	Private	31	\$225,369	\$227,236	<5	78.9
120	7341	Merage Group Pty Ltd	Private	8	\$13,409	\$13,409	0	85.7
121	7502	Mint Training Pty Limited	Private	45	\$366,862	\$367,355	20	95.0
122	7437	MVJ Enterprises Pty Ltd	Private	19	\$64,100	\$64,100	11	91.3
123	7361	MW Training Consultants Pty Ltd as trustee for The Morgan-Williams Family Trust	Private	<5	\$2,400	\$2,400	0	100.0
124	4376	Nature Care College Pty Ltd	Private	156	\$1,226,154	\$1,227,165	74	98.3
125	4336	Navitas Professional Institute Pty Ltd	Private	673	\$3,606,300	\$3,606,300	387	80.6
126	7461	New England Institute of Technology Pty Ltd	Private	41	\$310,000	\$310,000	<5	8.8
127	7336	New York Film Academy Australia Pty Ltd	Private	78	\$984,750	\$984,750	70	97.2
128	7301	Niche Education Group Pty Ltd	Private	565	\$4,241,527	\$4,245,094	280	78.0
129	7150	Nicolie O'Neill Kinesiology Pty Ltd	Private	55	\$305,525	\$305,525	13	94.9
130	8071	North Metropolitan TAFE	TAFE	605	\$2,268,867	\$2,268,867	313	85.0
131	8060	North Regional TAFE	TAFE	12	\$31,492	\$31,492	6	89.7
132	7185	Oakhill Education Group Australia Pty Ltd	Private	91	\$702,826	\$699,826	40	56.4
133	7523	Orion Training and Performance Management Pty Ltd	Private	9	\$61,175	\$61,175	0	0.0
134	7122	PA & WJ Dow Pty Ltd	Private	17	\$750,600	\$750,600	<5	100.0
135	7007	ParaPharm Pty Ltd	Private	10	\$49,075	\$49,075	6	81.4
136	7358	Partners in Training Australia Pty. Ltd.	Private	82	\$309,799	\$309,799	25	81.5
137	7626	Passmores' Foundation Limited	Private	6	\$56,333	\$56,333	0	n/a
138	7334	Performing Arts Education Pty Ltd	Private	61	\$929,950	\$929,950	60	98.9
139	7080	Pharmaceutical Society of Australia Limited	Private	6	\$10,250	\$10,250	0	100.0
140	7035	Photography Holdings Pty. Ltd. as trustee for Photography Studies College (Melbourne) Unit Trust	Private	25	\$541,500	\$541,500	22	93.2
141	7427	Pragmatic Training Pty. Ltd.	Private	657	\$7,254,998	\$7,263,478	370	78.4
142	7197	Proteus Technologies Pty Ltd	Private	428	\$4,244,355	\$4,253,855	25	74.6
143	7479	Queensland Agricultural Training Colleges	Other Public	<5	\$5,300	\$5,300	<5	80.0
144	7010	Republica Education Pty Ltd	Private	13	\$85,338	\$92,320	6	44.1
145	3034	Royal Melbourne Institute of Technology	Other Public	991	\$5,017,364	\$5,025,270	543	86.2

Rank	Provider ID	Provider name	Provider Type	Students	Loans paid	Tuition fees charged	Students completing courses	Unit of study completion rate (%)
146	7278	Royal Victorian Aero Club	Private	9	\$260,489	\$260,589	6	76.0
147	7271	Rycki Symons Pty Limited	Private	24	\$186,278	\$186,278	17	91.1
148	4371	SAE Institute Pty Limited	Private	204	\$1,397,184	\$1,397,184	128	83.8
149	4397	Sarina Russo Schools Australia Pty Ltd	Private	<5	\$3,305	\$3,305	<5	32.9
150	7648	SCA Hair & Beauty Academy Pty Ltd	Private	17	\$190,804	\$190,804	6	100.0
151	7381	Screenwise Pty. Limited	Private	28	\$453,750	\$453,750	28	100.0
152	7369	Shafston House College Ltd	Private	52	\$359,402	\$359,402	7	25.6
153	7378	Shakra Pty Ltd	Private	39	\$307,625	\$314,000	33	88.7
154	7395	Smart City Vocational College Pty. Ltd.	Private	73	\$406,666	\$406,666	0	0.0
155	7309	SMR Learning Services Pty Ltd	Private	380	\$2,978,894	\$2,978,894	81	84.4
156	4468	South Metropolitan TAFE	TAFE	205	\$924,120	\$973,524	84	88.2
157	8072	South Regional TAFE	TAFE	96	\$343,011	\$343,011	56	92.7
158	7142	South West Institute of TAFE	TAFE	76	\$239,723	\$240,203	18	94.3
159	7412	Southern Aviation Pty Ltd	Private	26	\$849,391	\$851,937	15	100.0
160	7239	Southern Cross Education Institute Pty Ltd	Private	26	\$171,262	\$171,262	<5	100.0
161	7312	Stirling Institute of Australia Pty Ltd	Private	30	\$221,667	\$221,667	0	0.0
162	7382	Strategix Training Group Pty Ltd	Private	243	\$1,696,397	\$1,697,580	56	75.0
163	7116	Study Group Australia Pty Limited	Private	2,274	\$14,011,057	\$14,028,858	736	58.0
164	7102	Sunraysia Institute of TAFE	TAFE	45	\$81,530	\$81,530	23	89.9
165	2177	Swinburne University of Technology	Other Public	650	\$2,775,423	\$2,779,661	378	84.3
166	7147	Sydney Film School Pty Ltd	Private	24	\$304,500	\$304,500	18	86.2
167	7041	Sydney Institute of Health Sciences Pty. Limited	Private	19	\$65,020	\$65,020	5	100.0
168	7371	Sydney Theatre Management Pty. Limited	Private	34	\$572,800	\$572,800	13	100.0
169	4450	TAFE Queensland	TAFE	5,005	\$25,972,713	\$26,216,665	2,743	83.7
170	7338	TAFE SA	TAFE	1,426	\$3,681,023	\$3,696,009	199	82.4
171	7747	Talentmed Pty Ltd	Private	446	\$2,035,200	\$2,035,200	113	89.7
172	7826	Tandem College Pty Ltd	Private	150	\$1,515,234	\$1,515,234	54	70.1
173	7460	TasTAFE	TAFE	227	\$555,682	\$555,682	118	98.7
174	7075	Technical and Further Education Commission of NSW	TAFE	6,256	\$29,265,111	\$29,279,493	2,070	88.5
175	7028	The Academy of Interactive Entertainment Ltd	Private	869	\$14,197,166	\$14,212,247	461	77.1
176	7443	The Australian Academy of Business Pty Ltd as Trustee for the Australian Academy of Business Unit Trust	Private	8	\$44,550	\$44,550	8	12.9
177	7326	The Australian College of Hair Design and Beauty Pty Ltd	Private	9	\$39,932	\$39,932	0	0.0
178	7428	The Creche and Kindergarten Association Limited	Private	5	\$2,900	\$3,840	<5	100.0
179	7329	The French Beauty Academy Pty Ltd	Private	299	\$3,891,078	\$3,953,645	160	74.3
180	7091	The Health Arts College Pty Ltd	Private	123	\$1,158,081	\$1,158,081	37	95.9
181	7390	The Holistic Healing Company Pty Limited	Private	81	\$482,499	\$482,499	27	99.3
182	7261	The International Golf Institute Pty Ltd	Private	8	\$74,250	\$74,250	5	83.3
183	7697	The Lady Gowrie Child Centre Melbourne Inc	Private	14	\$33,382	\$33,382	7	97.1
184	7384	The Learning Workshop Pty Ltd	Private	6	\$9,375	\$9,375	5	80.0
185	7056	The Malka Group Pty. Ltd.	Private	38	\$141,248	\$141,248	9	71.1

Rank	Provider ID	Provider name	Provider Type	Students	Loans paid	Tuition fees charged	Students completing courses	Unit of study completion rate (%)
186	7465	The Mask Academy Pty Ltd	Private	84	\$517,384	\$517,384	44	100.0
187	2148	The National Institute of Dramatic Art	Other Public	9	\$24,750	\$24,750	9	100.0
188	7683	The Redcliffe Aero Club	Private	6	\$220,594	\$223,468	6	100.0
189	3044	The University of Notre Dame Australia	Private	33	\$104,860	\$104,860	18	93.4
190	4375	Think: Colleges Pty Ltd	Private	2,891	\$22,373,248	\$22,473,225	947	63.1
191	7131	Transformations - Pathways to Competence & Developing Excellence Pty Ltd	Private	110	\$418,114	\$418,114	46	93.1
192	7267	Uniting Institute of Education Ltd	Private	10	\$30,922	\$30,922	9	90.2
193	7372	Unity College Australia Incorporated	Private	135	\$947,606	\$950,425	77	91.3
194	3019	University of Queensland	Other Public	<5	\$1,568	\$1,568	<5	100.0
195	4377	UOWC Ltd	Private	49	\$462,430	\$464,833	38	80.8
196	3007	Victoria University	Other Public	568	\$1,782,944	\$1,783,349	369	86.5
197	7349	Victorian Fitness Academy Pty Ltd	Private	23	\$131,667	\$131,667	16	89.2
198	7478	Virtu Design Institute Pty Limited	Private	156	\$1,087,200	\$1,087,200	84	79.3
199	7205	Visual Concepts & Design Australia Pty Ltd	Private	19	\$240,374	\$240,374	0	33.3
200	7161	Wealth Within Institute Pty Ltd	Private	46	\$266,577	\$266,577	14	85.0
201	4394	William Angliss Institute of TAFE	TAFE	78	\$382,751	\$382,786	44	71.5
202	7118	Wodonga Institute of TAFE	TAFE	146	\$329,504	\$329,504	77	88.8
203	7110	Workers Educational Association - Hunter	Private	44	\$946,750	\$946,750	28	100.0
204	7032	YourLife Health and Learning Inc	Private	127	\$863,884	\$864,425	33	95.3
		<b>Total:</b>		<b>47,602</b>	<b>\$307,630,755</b>	<b>\$310,788,308</b>	<b>17,879</b>	<b>71.5</b>

**Table 2: VFH providers ordered by VFH-assisted student numbers in 2017**

Rank	Provider ID	Provider name	Students	EFTSL	Tuition fees	Paid upfront	Loans paid	Tuition fees per student	Tuition fees per EFTSL	Loans per student	Loans per EFTSL
1	7075	Technical and Further Education Commission of NSW	6,256	3,490.2	\$29,279,493	\$161	\$29,265,111	\$4,680	\$8,389	\$4,678	\$8,385
2	4450	TAFE Queensland	5,005	2,452.4	\$26,216,665	\$243,970	\$25,972,713	\$5,238	\$10,690	\$5,189	\$10,591
3	4375	Think: Colleges Pty Ltd	2,891	1,273.3	\$22,473,225	\$99,869	\$22,373,248	\$7,774	\$17,649	\$7,739	\$17,570
4	7116	Study Group Australia Pty Limited	2,274	816.5	\$14,028,858	\$16,438	\$14,011,057	\$6,169	\$17,181	\$6,161	\$17,159
5	7253	Careers Australia Education Institute Pty Ltd	2,137	627.5	\$12,848,591	\$320,162	\$12,528,429	\$6,012	\$20,477	\$5,863	\$19,966
6	7352	Australian Institute of Personal Trainers Pty Ltd	1,539	1,187.6	\$8,761,515	\$0	\$8,761,515	\$5,693	\$7,377	\$5,693	\$7,377
7	7039	ACTE Pty Ltd	1,528	754.2	\$9,909,555	\$0	\$9,909,555	\$6,485	\$13,139	\$6,485	\$13,139
8	7338	TAFE SA	1,426	441.2	\$3,696,009	\$14,986	\$3,681,023	\$2,592	\$8,377	\$2,581	\$8,343
9	7591	Life Coaching Institute (Aust) Pty Ltd ATF The Life Coaching Institute Trust	1,047	534.9	\$5,676,513	\$0	\$5,676,513	\$5,422	\$10,613	\$5,422	\$10,613
10	3034	Royal Melbourne Institute of Technology	991	839.2	\$5,025,270	\$7,906	\$5,017,364	\$5,071	\$5,988	\$5,063	\$5,979
11	7028	The Academy of Interactive Entertainment Ltd	869	742.7	\$14,212,247	\$15,081	\$14,197,166	\$16,355	\$19,136	\$16,337	\$19,116
12	7073	Chisholm Institute of Technical and Further Education	790	310.4	\$2,544,917	\$1,031	\$2,543,886	\$3,221	\$8,198	\$3,220	\$8,194
13	4383	Holmesglen Institute of TAFE	770	575.5	\$2,564,175	\$4,749	\$2,559,426	\$3,330	\$4,456	\$3,324	\$4,447
14	7403	Access Group Training Pty Limited	734	545.6	\$4,771,900	\$0	\$4,771,900	\$6,501	\$8,746	\$6,501	\$8,746
15	4336	Navitas Professional Institute Pty Ltd	673	251.2	\$3,606,300	\$0	\$3,606,300	\$5,359	\$14,354	\$5,359	\$14,354
16	7427	Pragmatic Training Pty. Ltd.	657	338.7	\$7,263,478	\$8,479	\$7,254,998	\$11,056	\$21,443	\$11,043	\$21,418
17	2177	Swinburne University of Technology	650	336.0	\$2,779,661	\$4,238	\$2,775,423	\$4,276	\$8,273	\$4,270	\$8,260
18	8071	North Metropolitan TAFE	605	362.0	\$2,268,867	\$0	\$2,268,867	\$3,750	\$6,267	\$3,750	\$6,267
19	3007	Victoria University	568	269.0	\$1,783,349	\$405	\$1,782,944	\$3,140	\$6,629	\$3,139	\$6,628
20	7503	Harvest Education Technical College Pty. Ltd. as trustee for the HETC Trust	567	348.8	\$7,314,331	\$0	\$7,308,065	\$12,900	\$20,969	\$12,889	\$20,951
21	7301	Niche Education Group Pty Ltd	565	262.6	\$4,245,094	\$3,567	\$4,241,527	\$7,513	\$16,163	\$7,507	\$16,149
22	7396	Australis College Pty Ltd	532	400.1	\$3,705,252	\$26,659	\$3,646,757	\$6,965	\$9,262	\$6,855	\$9,116
23	7203	BCA National Training Group Pty Ltd	523	319.4	\$4,326,486	\$139,562	\$4,186,924	\$8,272	\$13,546	\$8,006	\$13,110
24	7394	Management Consultancy International Pty Limited	511	303.5	\$3,120,638	\$16,353	\$3,104,285	\$6,107	\$10,284	\$6,075	\$10,230
25	7251	Health Skills Australia Pty Ltd	510	266.6	\$4,469,952	\$1,153,764	\$3,316,188	\$8,765	\$16,765	\$6,502	\$12,438
26	7747	Talentmed Pty Ltd	446	321.1	\$2,035,200	\$0	\$2,035,200	\$4,563	\$6,338	\$4,563	\$6,338
27	4366	Box Hill Institute	442	245.8	\$5,641,327	\$4,945	\$5,636,169	\$12,763	\$22,953	\$12,752	\$22,932
28	7197	Proteus Technologies Pty Ltd	428	311.4	\$4,253,855	\$9,500	\$4,244,355	\$9,939	\$13,659	\$9,917	\$13,629
29	7309	SMR Learning Services Pty Ltd	380	238.6	\$2,978,894	\$0	\$2,978,894	\$7,839	\$12,486	\$7,839	\$12,486
30	7082	Bendigo Kangan Institute	332	213.6	\$1,227,662	\$16,365	\$1,211,297	\$3,698	\$5,749	\$3,648	\$5,672
31	7274	Access Training Institute Pty Ltd	318	162.8	\$2,244,873	\$0	\$2,244,873	\$7,059	\$13,787	\$7,059	\$13,787
32	7329	The French Beauty Academy Pty Ltd	299	176.2	\$3,953,645	\$62,568	\$3,891,078	\$13,223	\$22,441	\$13,014	\$22,086
33	7155	Australian Institute of Family Counselling Ltd	297	155.1	\$1,467,868	\$644	\$1,467,224	\$4,942	\$9,465	\$4,940	\$9,460
34	7012	Australian Education Group Pty Ltd	295	298.5	\$4,523,000	\$0	\$4,523,000	\$15,332	\$15,152	\$15,332	\$15,152
35	4363	Melbourne Polytechnic	294	223.2	\$1,060,098	\$0	\$1,060,098	\$3,606	\$4,751	\$3,606	\$4,751
36	7145	Goulburn Ovens Institute of TAFE	292	107.2	\$1,215,777	\$1,110	\$1,214,667	\$4,164	\$11,339	\$4,160	\$11,329
37	7377	Churchill Education Pty Ltd as trustee for Decelle Investment Trust	274	151.7	\$1,799,276	\$0	\$1,799,276	\$6,567	\$11,859	\$6,567	\$11,859
38	2200	Central Queensland University	262	141.8	\$884,020	\$120	\$883,900	\$3,374	\$6,236	\$3,374	\$6,235
39	7521	Malekhu Investments Pty. Ltd.	253	131.7	\$2,177,810	\$0	\$2,175,224	\$8,608	\$16,542	\$8,598	\$16,522

Rank	Provider ID	Provider name	Students	EFTSL	Tuition fees	Paid upfront	Loans paid	Tuition fees per student	Tuition fees per EFTSL	Loans per student	Loans per EFTSL
40	7382	Strategix Training Group Pty Ltd	243	117.0	\$1,697,580	\$0	\$1,696,397	\$6,986	\$14,510	\$6,981	\$14,500
41	7460	TasTAFE	227	319.0	\$555,682	\$0	\$555,682	\$2,448	\$1,742	\$2,448	\$1,742
42	7244	Kirana Training Pty Ltd	226	101.7	\$1,260,283	\$3	\$1,260,280	\$5,576	\$12,397	\$5,576	\$12,397
43	4468	South Metropolitan TAFE	205	98.2	\$973,524	\$49,403	\$924,120	\$4,749	\$9,912	\$4,508	\$9,409
44	4371	SAE Institute Pty Limited	204	80.0	\$1,397,184	\$0	\$1,397,184	\$6,849	\$17,466	\$6,849	\$17,466
45	4372	Gordon Institute of TAFE	197	112.8	\$608,053	\$638	\$607,416	\$3,087	\$5,391	\$3,083	\$5,385
46	7159	Emma's Secret Investments Pty Ltd	197	102.4	\$1,549,063	\$0	\$1,549,063	\$7,863	\$15,131	\$7,863	\$15,131
47	7088	College of Complementary Medicine NSW Pty Ltd	184	195.6	\$2,291,116	\$60,462	\$2,230,654	\$12,452	\$11,716	\$12,123	\$11,407
48	7086	Charlton Brown Pty Ltd	180	67.1	\$538,135	\$0	\$538,135	\$2,990	\$8,022	\$2,990	\$8,022
49	7235	Mater Education Limited	164	107.9	\$1,288,889	\$6,706	\$1,282,184	\$7,859	\$11,942	\$7,818	\$11,880
50	7068	Federation Training	160	78.8	\$487,113	\$589	\$486,524	\$3,044	\$6,184	\$3,041	\$6,176
51	7306	Health Careers International Pty Ltd	156	122.6	\$1,397,427	\$442,728	\$954,699	\$8,958	\$11,394	\$6,120	\$7,784
52	4376	Nature Care College Pty Ltd	156	99.2	\$1,227,165	\$430	\$1,226,154	\$7,866	\$12,369	\$7,860	\$12,358
53	7478	Virtu Design Institute Pty Limited	156	75.8	\$1,087,200	\$0	\$1,087,200	\$6,969	\$14,339	\$6,969	\$14,339
54	7826	Tandem College Pty Ltd	150	101.0	\$1,515,234	\$0	\$1,515,234	\$10,102	\$15,005	\$10,102	\$15,005
55	7742	Demi International Beauty Academy Pty Ltd	146	97.8	\$1,269,588	\$5,268	\$1,264,320	\$8,696	\$12,988	\$8,660	\$12,934
56	7118	Wodonga Institute of TAFE	146	65.8	\$329,504	\$0	\$329,504	\$2,257	\$5,005	\$2,257	\$5,005
57	7372	Unity College Australia Incorporated	135	86.5	\$950,425	\$2,819	\$947,606	\$7,040	\$10,982	\$7,019	\$10,949
58	3006	Australian Catholic University Limited	131	68.9	\$491,515	\$49,833	\$441,681	\$3,752	\$7,134	\$3,372	\$6,411
59	2154	Federation University Australia	131	63.4	\$454,342	\$50	\$454,292	\$3,468	\$7,166	\$3,468	\$7,165
60	7321	Australian Institute of Fashion Design Pty Ltd	130	62.6	\$1,020,063	\$0	\$1,020,063	\$7,847	\$16,297	\$7,847	\$16,297
61	7032	YourLife Health and Learning Inc	127	88.6	\$864,425	\$541	\$863,884	\$6,807	\$9,761	\$6,802	\$9,755
62	4407	Alphacrucis College Limited	125	52.0	\$366,130	\$330	\$365,800	\$2,929	\$7,036	\$2,926	\$7,029
63	4341	Harvest Bible College Inc	124	50.6	\$671,975	\$0	\$671,975	\$5,419	\$13,268	\$5,419	\$13,268
64	7091	The Health Arts College Pty Ltd	123	57.7	\$1,158,081	\$0	\$1,158,081	\$9,415	\$20,078	\$9,415	\$20,078
65	7094	Basair Australia Pty Ltd	120	58.5	\$3,946,726	\$5,989	\$3,918,273	\$32,889	\$67,431	\$32,652	\$66,945
66	4406	Canberra Institute of Technology	116	50.8	\$229,737	\$5,027	\$224,710	\$1,980	\$4,525	\$1,937	\$4,426
67	7307	Empowerment Options Pty Ltd ATF Empowerment Options Family Trust	115	56.0	\$493,104	\$0	\$493,104	\$4,288	\$8,810	\$4,288	\$8,810
68	7131	Transformations - Pathways to Competence & Developing Excellence Pty Ltd	110	80.7	\$418,114	\$0	\$418,114	\$3,801	\$5,182	\$3,801	\$5,182
69	7020	Ella Bache College Pty Ltd	100	43.0	\$693,947	\$13,419	\$680,529	\$6,939	\$16,154	\$6,805	\$15,842
70	4361	Australian College of Natural Medicine Pty Ltd	98	45.6	\$516,411	\$0	\$516,411	\$5,270	\$11,334	\$5,270	\$11,334
71	8072	South Regional TAFE	96	63.1	\$343,011	\$0	\$343,011	\$3,573	\$5,436	\$3,573	\$5,436
72	7536	Australian Institute of Fitness Pty Ltd	92	41.9	\$642,881	\$3,000	\$639,881	\$6,988	\$15,351	\$6,955	\$15,279
73	7185	Oakhill Education Group Australia Pty Ltd	91	60.6	\$699,826	\$0	\$702,826	\$7,690	\$11,553	\$7,723	\$11,602
74	7124	Academy of Information Technology Pty Ltd	88	29.4	\$483,293	\$0	\$483,293	\$5,492	\$16,454	\$5,492	\$16,454
75	7465	The Mask Academy Pty Ltd	84	34.9	\$517,384	\$0	\$517,384	\$6,159	\$14,812	\$6,159	\$14,812
76	7358	Partners in Training Australia Pty. Ltd.	82	62.9	\$309,799	\$0	\$309,799	\$3,778	\$4,924	\$3,778	\$4,924
77	7390	The Holistic Healing Company Pty Limited	81	44.6	\$482,499	\$0	\$482,499	\$5,957	\$10,831	\$5,957	\$10,831
78	4394	William Angliss Institute of TAFE	78	47.2	\$382,786	\$35	\$382,751	\$4,908	\$8,105	\$4,907	\$8,104
79	7517	Alderdice & Associates Pty. Limited ATF Alderdice & Associates Trust	78	40.0	\$742,000	\$0	\$742,000	\$9,513	\$18,550	\$9,513	\$18,550
80	7336	New York Film Academy Australia Pty Ltd	78	27.3	\$984,750	\$0	\$984,750	\$12,625	\$36,138	\$12,625	\$36,138
81	7142	South West Institute of TAFE	76	51.6	\$240,203	\$479	\$239,723	\$3,161	\$4,653	\$3,154	\$4,643



Rank	Provider ID	Provider name	Students	EFTSL	Tuition fees	Paid upfront	Loans paid	Tuition fees per student	Tuition fees per EFTSL	Loans per student	Loans per EFTSL
82	7395	Smart City Vocational College Pty. Ltd.	73	33.0	\$406,666	\$0	\$406,666	\$5,571	\$12,317	\$5,571	\$12,317
83	7189	Australian College of Health & Fitness Pty Ltd	70	27.0	\$172,297	\$0	\$172,297	\$2,461	\$6,381	\$2,461	\$6,381
84	7504	Australian Careers Institute Pty Ltd	68	22.8	\$376,046	\$0	\$376,046	\$5,530	\$16,522	\$5,530	\$16,522
85	7685	Australian Institute of Higher and Further Education Pty Ltd	67	27.2	\$400,768	\$0	\$400,768	\$5,982	\$14,738	\$5,982	\$14,738
86	7701	Aurora Training Institute Pty Ltd	65	41.3	\$475,013	\$0	\$475,013	\$7,308	\$11,515	\$7,308	\$11,515
87	7360	Bruce Hartwig Flying School Pty Ltd	65	39.5	\$2,637,417	\$0	\$2,594,235	\$40,576	\$66,816	\$39,911	\$65,722
88	7009	Baptist Business College Ltd	64	45.8	\$437,686	\$0	\$437,686	\$6,839	\$9,567	\$6,839	\$9,567
89	7229	Australian Nursing & Midwifery Federation (SA Branch)	64	29.4	\$236,007	\$0	\$236,007	\$3,688	\$8,033	\$3,688	\$8,033
90	7334	Performing Arts Education Pty Ltd	61	46.1	\$929,950	\$0	\$929,950	\$15,245	\$20,177	\$15,245	\$20,177
91	7276	Contour Systems Pty Ltd	60	23.5	\$394,194	\$0	\$394,194	\$6,570	\$16,788	\$6,570	\$16,788
92	7429	CMA Training Group Pty Ltd	59	23.4	\$237,712	\$0	\$237,712	\$4,029	\$10,146	\$4,029	\$10,146
93	7340	Actors College of Theatre & Television Pty Ltd	56	46.0	\$819,000	\$0	\$819,000	\$14,625	\$17,804	\$14,625	\$17,804
94	7150	Nicolie O'Neill Kinesiology Pty Ltd	55	37.2	\$305,525	\$0	\$305,525	\$5,555	\$8,204	\$5,555	\$8,204
95	7023	International Film School Sydney Pty Ltd	54	46.5	\$1,339,000	\$0	\$1,327,490	\$24,796	\$28,796	\$24,583	\$28,548
96	8073	Central Regional TAFE	53	39.0	\$215,044	\$0	\$215,044	\$4,057	\$5,520	\$4,057	\$5,520
97	7047	Hope of the Gold Coast Ltd	53	28.6	\$154,902	\$0	\$154,902	\$2,923	\$5,421	\$2,923	\$5,421
98	7262	EQUALS International (Aust) Pty Ltd	53	18.6	\$176,337	\$4,515	\$171,822	\$3,327	\$9,471	\$3,242	\$9,229
99	7369	Shafston House College Ltd	52	23.3	\$359,402	\$0	\$359,402	\$6,912	\$15,438	\$6,912	\$15,438
100	7049	Golf Education Australia Pty Ltd	51	21.0	\$805,400	\$0	\$805,400	\$15,792	\$38,426	\$15,792	\$38,426
101	4458	Australian Institute of Management Education and Training Pty Limited	51	20.2	\$252,449	\$0	\$252,449	\$4,950	\$12,473	\$4,950	\$12,473
102	4377	UOWC Ltd	49	29.7	\$464,833	\$2,403	\$462,430	\$9,486	\$15,672	\$9,437	\$15,591
103	7172	Flight Training Adelaide Pty Ltd	48	22.3	\$1,511,640	\$103,064	\$1,408,576	\$31,493	\$67,756	\$29,345	\$63,137
104	7568	Australian College of Finance Pty Limited	47	21.5	\$373,933	\$0	\$373,933	\$7,956	\$17,384	\$7,956	\$17,384
105	7158	Accredited Courses Australia Pty Ltd	46	34.5	\$777,975	\$0	\$777,975	\$16,913	\$22,550	\$16,913	\$22,550
106	7143	Australian Wings Academy Pty Ltd	46	24.1	\$1,702,729	\$19,941	\$1,682,482	\$37,016	\$70,732	\$36,576	\$69,891
107	7161	Wealth Within Institute Pty Ltd	46	21.8	\$266,577	\$0	\$266,577	\$5,795	\$12,240	\$5,795	\$12,240
108	7502	Mint Training Pty Limited	45	27.4	\$367,355	\$0	\$366,862	\$8,163	\$13,404	\$8,152	\$13,386
109	7102	Sunraysia Institute of TAFE	45	25.2	\$81,530	\$0	\$81,530	\$1,812	\$3,237	\$1,812	\$3,237
110	7026	Australian College of Sports Therapy Pty Ltd	45	13.1	\$161,927	\$1,732	\$160,194	\$3,598	\$12,332	\$3,560	\$12,200
111	7110	Workers Educational Association - Hunter	44	60.4	\$946,750	\$0	\$946,750	\$21,517	\$15,675	\$21,517	\$15,675
112	7347	Design Schools Australia Pty Ltd	43	29.7	\$341,015	\$0	\$341,015	\$7,931	\$11,485	\$7,931	\$11,485
113	7461	New England Institute of Technology Pty Ltd	41	20.0	\$310,000	\$0	\$310,000	\$7,561	\$15,477	\$7,561	\$15,477
114	7600	Elite Training & Development Pty Ltd	41	18.0	\$286,200	\$0	\$286,200	\$6,980	\$15,944	\$6,980	\$15,944
115	7756	Australian College of Fitness and Bodywork Pty Ltd	41	15.6	\$125,308	\$6,355	\$118,953	\$3,056	\$8,008	\$2,901	\$7,602
116	7729	Global Training Institute Pty Ltd	40	22.4	\$487,625	\$0	\$487,625	\$12,191	\$21,748	\$12,191	\$21,748
117	7378	Shakra Pty Ltd	39	19.7	\$314,000	\$6,375	\$307,625	\$8,051	\$15,963	\$7,888	\$15,639
118	7056	The Malka Group Pty. Ltd.	38	17.3	\$141,248	\$0	\$141,248	\$3,717	\$8,181	\$3,717	\$8,181
119	7223	CALAM Training Ltd	37	37.5	\$222,360	\$0	\$222,360	\$6,010	\$5,925	\$6,010	\$5,925
120	7365	Franklyn Scholar (Australia) Pty Ltd	36	10.9	\$238,800	\$0	\$238,800	\$6,633	\$21,888	\$6,633	\$21,888
121	3001	Charles Darwin University	35	11.5	\$70,977	\$0	\$70,977	\$2,028	\$6,168	\$2,028	\$6,168
122	7371	Sydney Theatre Management Pty. Limited	34	32.0	\$572,800	\$0	\$572,800	\$16,847	\$17,900	\$16,847	\$17,900
123	7401	Jigsaw Consulting Group Pty Ltd	34	16.8	\$239,622	\$0	\$239,622	\$7,048	\$14,280	\$7,048	\$14,280

Rank	Provider ID	Provider name	Students	EFTSL	Tuition fees	Paid upfront	Loans paid	Tuition fees per student	Tuition fees per EFTSL	Loans per student	Loans per EFTSL
124	7213	Dazzle-M Pty Ltd	34	15.5	\$169,000	\$2,267	\$166,733	\$4,971	\$10,875	\$4,904	\$10,729
125	3044	The University of Notre Dame Australia	33	17.4	\$104,860	\$0	\$104,860	\$3,178	\$6,020	\$3,178	\$6,020
126	7407	Air Gold Coast Pty. Ltd.	32	17.3	\$908,936	\$0	\$908,936	\$28,404	\$52,479	\$28,404	\$52,479
127	7333	Menzies Institute of Technology Pty Ltd	31	14.6	\$227,236	\$1,867	\$225,369	\$7,330	\$15,512	\$7,270	\$15,384
128	7312	Stirling Institute of Australia Pty Ltd	30	17.7	\$221,667	\$0	\$221,667	\$7,389	\$12,548	\$7,389	\$12,548
129	7380	Kreate Pty Ltd	30	10.3	\$63,838	\$0	\$63,838	\$2,128	\$6,228	\$2,128	\$6,228
130	7381	Screenwise Pty. Limited	28	13.8	\$453,750	\$0	\$453,750	\$16,205	\$33,000	\$16,205	\$33,000
131	7363	Australian College of Event Management Pty Ltd	28	3.5	\$131,250	\$2,188	\$129,063	\$4,688	\$37,500	\$4,609	\$36,875
132	7239	Southern Cross Education Institute Pty Ltd	26	14.3	\$171,262	\$0	\$171,262	\$6,587	\$12,014	\$6,587	\$12,014
133	7412	Southern Aviation Pty Ltd	26	12.9	\$851,937	\$2,547	\$849,391	\$32,767	\$66,042	\$32,669	\$65,844
134	7035	Photography Holdings Pty. Ltd. as trustee for Photography Studies College (Melbourne) Unit Trust	25	24.3	\$541,500	\$0	\$541,500	\$21,660	\$22,266	\$21,660	\$22,266
135	7325	LaTrobe International Galleries Pty. Ltd.	25	15.9	\$244,270	\$0	\$244,270	\$9,771	\$15,323	\$9,771	\$15,323
136	7147	Sydney Film School Pty Ltd	24	12.3	\$304,500	\$0	\$304,500	\$12,688	\$24,857	\$12,688	\$24,857
137	7271	Rycki Symons Pty Limited	24	11.1	\$186,278	\$0	\$186,278	\$7,762	\$16,808	\$7,762	\$16,808
138	7349	Victorian Fitness Academy Pty Ltd	23	13.0	\$131,667	\$0	\$131,667	\$5,725	\$10,138	\$5,725	\$10,138
139	7590	Melbourne College of Hairdressing Beauty Therapy & Natural Medicine Pty Ltd	23	11.2	\$173,040	\$0	\$173,040	\$7,523	\$15,454	\$7,523	\$15,454
140	7052	Melbourne Rudolf Steiner Seminar Ltd	22	20.8	\$195,050	\$0	\$195,050	\$8,866	\$9,400	\$8,866	\$9,400
141	7036	MEGT (Australia) Ltd.	22	7.0	\$124,967	\$0	\$124,967	\$5,680	\$17,852	\$5,680	\$17,852
142	7495	International Screen Academy Pty Limited	21	15.5	\$321,800	\$0	\$321,800	\$15,324	\$20,761	\$15,324	\$20,761
143	7041	Sydney Institute of Health Sciences Pty. Limited	19	10.1	\$65,020	\$0	\$65,020	\$3,422	\$6,407	\$3,422	\$6,407
144	7205	Visual Concepts & Design Australia Pty Ltd	19	9.5	\$240,374	\$0	\$240,374	\$12,651	\$25,303	\$12,651	\$25,303
145	7423	Australian College of Commerce & Management Pty Ltd	19	7.0	\$40,107	\$0	\$40,107	\$2,111	\$5,730	\$2,111	\$5,730
146	7437	MVJ Enterprises Pty Ltd	19	6.3	\$64,100	\$0	\$64,100	\$3,374	\$10,256	\$3,374	\$10,256
147	7163	Australian National Memorial Theatre Limited	18	17.9	\$155,083	\$0	\$155,083	\$8,616	\$8,674	\$8,616	\$8,674
148	7093	Marr Mooditj Training	18	13.4	\$69,490	\$99	\$69,391	\$3,861	\$5,187	\$3,855	\$5,180
149	7280	Job Training Institute Pty Ltd	18	13.3	\$132,019	\$0	\$132,019	\$7,334	\$9,904	\$7,334	\$9,904
150	7141	Asia Pacific Training Institute Pty. Ltd.	18	4.9	\$111,282	\$0	\$111,282	\$6,182	\$22,804	\$6,182	\$22,804
151	7648	SCA Hair & Beauty Academy Pty Ltd	17	13.5	\$190,804	\$0	\$190,804	\$11,224	\$14,165	\$11,224	\$14,165
152	7122	PA & WJ Dow Pty Ltd	17	8.7	\$750,600	\$0	\$750,600	\$44,153	\$86,375	\$44,153	\$86,375
153	7058	Jschool: Journalism Education & Training Pty Ltd	17	8.1	\$160,089	\$0	\$160,089	\$9,417	\$19,856	\$9,417	\$19,856
154	7463	Cronin Pty Ltd	17	6.3	\$99,500	\$0	\$99,500	\$5,853	\$15,920	\$5,853	\$15,920
155	7541	Australasian Beauty Therapy Academy Pty Ltd	15	6.3	\$53,100	\$0	\$53,100	\$3,540	\$8,469	\$3,540	\$8,469
156	7027	Kal Multimedia Training Pty Ltd	15	5.6	\$51,372	\$0	\$51,372	\$3,425	\$9,094	\$3,425	\$9,094
157	7697	The Lady Gowrie Child Centre Melbourne Inc	14	13.4	\$33,382	\$0	\$33,382	\$2,384	\$2,497	\$2,384	\$2,497
158	7553	Australian Salesmasters Training Co. Pty Limited	14	5.6	\$91,000	\$0	\$91,000	\$6,500	\$16,250	\$6,500	\$16,250
159	7473	LTT Group Pty Ltd	13	7.1	\$64,009	\$0	\$64,009	\$4,924	\$9,041	\$4,924	\$9,041
160	7144	Benchmark Resources Pty Ltd	13	5.3	\$16,101	\$0	\$16,101	\$1,239	\$3,067	\$1,239	\$3,067
161	7010	Republica Education Pty Ltd	13	5.2	\$92,320	\$6,982	\$85,338	\$7,102	\$17,720	\$6,564	\$16,380
162	7449	Anglican Church Property Trust Diocese of Canberra & Goulburn	12	14.0	\$44,850	\$0	\$44,850	\$3,738	\$3,204	\$3,738	\$3,204
163	8060	North Regional TAFE	12	6.4	\$31,492	\$0	\$31,492	\$2,624	\$4,892	\$2,624	\$4,892
164	7425	Adamattrin Pty Ltd as Trustee for Mesaric Family Trust	11	5.0	\$76,834	\$0	\$76,834	\$6,985	\$15,367	\$6,985	\$15,367

Rank	Provider ID	Provider name	Students	EFTSL	Tuition fees	Paid upfront	Loans paid	Tuition fees per student	Tuition fees per EFTSL	Loans per student	Loans per EFTSL
165	7267	Uniting Institute of Education Ltd	10	10.2	\$30,922	\$0	\$30,922	\$3,092	\$3,023	\$3,092	\$3,023
166	7007	ParaPharm Pty Ltd	10	4.2	\$49,075	\$0	\$49,075	\$4,907	\$11,657	\$4,907	\$11,657
167	7278	Royal Victorian Aero Club	9	6.1	\$260,589	\$100	\$260,489	\$28,954	\$43,073	\$28,943	\$43,056
168	7523	Orion Training and Performance Management Pty Ltd	9	4.0	\$61,175	\$0	\$61,175	\$6,797	\$15,409	\$6,797	\$15,409
169	7326	The Australian College of Hair Design and Beauty Pty Ltd	9	2.5	\$39,932	\$0	\$39,932	\$4,437	\$15,785	\$4,437	\$15,785
170	2148	The National Institute of Dramatic Art	9	2.3	\$24,750	\$0	\$24,750	\$2,750	\$11,000	\$2,750	\$11,000
171	7230	Foundation for Education & Training Ltd	8	6.6	\$62,081	\$7,170	\$54,911	\$7,760	\$9,371	\$6,864	\$8,289
172	7245	Holmes Commercial Colleges (Melbourne) Ltd	8	5.9	\$111,000	\$2,455	\$108,545	\$13,875	\$18,894	\$13,568	\$18,476
173	7261	The International Golf Institute Pty Ltd	8	3.3	\$74,250	\$0	\$74,250	\$9,281	\$22,706	\$9,281	\$22,706
174	7628	Alertforce Pty Ltd	8	3.1	\$42,227	\$0	\$42,227	\$5,278	\$13,692	\$5,278	\$13,692
175	7661	Kiama Community College Incorporated	8	3.0	\$16,128	\$0	\$16,128	\$2,016	\$5,340	\$2,016	\$5,340
176	7443	The Australian Academy of Business Pty Ltd as Trustee for the Australian Academy of Business Unit Trust	8	2.6	\$44,550	\$0	\$44,550	\$5,569	\$17,249	\$5,569	\$17,249
177	7111	Design College Australia Pty Ltd	8	2.3	\$40,932	\$8,301	\$32,631	\$5,117	\$17,719	\$4,079	\$14,126
178	7341	Merage Group Pty Ltd	8	2.3	\$13,409	\$0	\$13,409	\$1,676	\$5,960	\$1,676	\$5,960
179	7405	Advanced Education Australia Pty Ltd	7	3.7	\$73,400	\$0	\$73,400	\$10,486	\$20,000	\$10,486	\$20,000
180	7345	Australia Moreton Education Group Pty Ltd	7	2.7	\$32,787	\$0	\$32,787	\$4,684	\$12,280	\$4,684	\$12,280
181	2252	Avondale College Limited	6	5.9	\$82,968	\$100	\$82,868	\$13,828	\$14,029	\$13,811	\$14,012
182	7080	Pharmaceutical Society of Australia Limited	6	3.5	\$10,250	\$0	\$10,250	\$1,708	\$2,962	\$1,708	\$2,962
183	7626	Passmores' Foundation Limited	6	3.5	\$56,333	\$0	\$56,333	\$9,389	\$16,310	\$9,389	\$16,310
184	7683	The Redcliffe Aero Club	6	2.2	\$223,468	\$0	\$220,594	\$37,245	\$103,171	\$36,766	\$101,844
185	7384	The Learning Workshop Pty Ltd	6	1.9	\$9,375	\$0	\$9,375	\$1,563	\$5,000	\$1,563	\$5,000
186	7108	Australian Academy of Vocational Education and Trades Pty Ltd	5	4.0	\$39,258	\$0	\$39,258	\$7,852	\$9,814	\$7,852	\$9,814
187	7428	The Creche and Kindergarten Association Limited	5	1.0	\$3,840	\$940	\$2,900	\$768	\$4,000	\$580	\$3,021
188	7646	Australian Skills Group Pty Ltd	<5	2.0	\$20,000	\$0	\$20,000	n.p.	\$10,000	n.p.	\$10,000
189	7206	Century Group Pty Ltd	<5	1.4	\$17,000	\$0	\$17,000	n.p.	\$12,364	n.p.	\$12,364
190	7479	Queensland Agricultural Training Colleges	<5	1.0	\$5,300	\$0	\$5,300	n.p.	\$5,300	n.p.	\$5,300
191	7819	Atkinson Training and Development Pty Limited	<5	1.0	\$5,564	\$0	\$5,564	n.p.	\$5,796	n.p.	\$5,796
192	7585	House of Learning Pty Ltd	<5	2.0	\$24,920	\$0	\$24,920	n.p.	\$12,459	n.p.	\$12,459
193	7370	GP Links Wide Bay Ltd	<5	1.0	\$12,150	\$0	\$12,150	n.p.	\$12,150	n.p.	\$12,150
194	7663	Innovative Business Training Pty Ltd	<5	1.0	\$16,080	\$0	\$16,080	n.p.	\$16,750	n.p.	\$16,750
195	7441	Impact Training Centre Ltd	<5	0.9	\$11,133	\$0	\$11,133	n.p.	\$12,234	n.p.	\$12,234
196	4397	Sarina Russo Schools Australia Pty Ltd	<5	0.4	\$3,305	\$0	\$3,305	n.p.	\$9,053	n.p.	\$9,053
197	7566	Fox Endeavours Pty Ltd	<5	1.8	\$29,362	\$21,604	\$7,758	n.p.	\$16,312	n.p.	\$4,310
198	7361	MW Training Consultants Pty Ltd as trustee for The Morgan-Williams Family Trust	<5	0.9	\$2,400	\$0	\$2,400	n.p.	\$2,824	n.p.	\$2,824
199	7175	Australian College of Ministries	<5	0.4	\$2,320	\$0	\$2,320	n.p.	\$5,800	n.p.	\$5,800
200	3019	University of Queensland	<5	1.0	\$1,568	\$0	\$1,568	n.p.	\$1,568	n.p.	\$1,568
201	7139	Community College Gippsland Ltd	<5	0.3	\$1,690	\$0	\$1,690	n.p.	\$6,688	n.p.	\$6,688
202	7092	Australian Careers Business College Pty Ltd	<5	0.3	\$1,250	\$0	\$1,250	n.p.	\$5,000	n.p.	\$5,000
203	7030	Australian College of Applied Education Pty Ltd	<5	0.3	\$3,050	\$0	\$3,050	n.p.	\$12,200	n.p.	\$12,200
204	7535	Department of Training and Workforce Development	<5	0.1	\$955	\$0	\$955	n.p.	\$7,975	n.p.	\$7,975
		<b>Total:</b>	<b>47,602</b>	<b>25,972.2</b>	<b>\$310,788,308</b>	<b>\$3,021,385</b>	<b>\$307,630,755</b>	<b>\$6,529</b>	<b>\$11,966</b>	<b>\$6,463</b>	<b>\$11,845</b>

**Table 3: VFH providers ordered by VFH loans paid in 2017**

Rank	Provider ID	Provider name	Students	EFTSL	Tuition fees	Paid upfront	Loans paid	Tuition fees per student	Tuition fees per EFTSL	Loans per student	Loans per EFTSL
1	7075	Technical and Further Education Commission of NSW	6,256	3,490.2	\$29,279,493	\$161	\$29,265,111	\$4,680	\$8,389	\$4,678	\$8,385
2	4450	TAFE Queensland	5,005	2,452.4	\$26,216,665	\$243,970	\$25,972,713	\$5,238	\$10,690	\$5,189	\$10,591
3	4375	Think: Colleges Pty Ltd	2,891	1,273.3	\$22,473,225	\$99,869	\$22,373,248	\$7,774	\$17,649	\$7,739	\$17,570
4	7028	The Academy of Interactive Entertainment Ltd	869	742.7	\$14,212,247	\$15,081	\$14,197,166	\$16,355	\$19,136	\$16,337	\$19,116
5	7116	Study Group Australia Pty Limited	2,274	816.5	\$14,028,858	\$16,438	\$14,011,057	\$6,169	\$17,181	\$6,161	\$17,159
6	7253	Careers Australia Education Institute Pty Ltd	2,137	627.5	\$12,848,591	\$320,162	\$12,528,429	\$6,012	\$20,477	\$5,863	\$19,966
7	7039	ACTE Pty Ltd	1,528	754.2	\$9,909,555	\$0	\$9,909,555	\$6,485	\$13,139	\$6,485	\$13,139
8	7352	Australian Institute of Personal Trainers Pty Ltd	1,539	1,187.6	\$8,761,515	\$0	\$8,761,515	\$5,693	\$7,377	\$5,693	\$7,377
9	7503	Harvest Education Technical College Pty. Ltd. as trustee for the HETC Trust	567	348.8	\$7,314,331	\$0	\$7,308,065	\$12,900	\$20,969	\$12,889	\$20,951
10	7427	Pragmatic Training Pty. Ltd.	657	338.7	\$7,263,478	\$8,479	\$7,254,998	\$11,056	\$21,443	\$11,043	\$21,418
11	7591	Life Coaching Institute (Aust) Pty Ltd ATF The Life Coaching Institute Trust	1,047	534.9	\$5,676,513	\$0	\$5,676,513	\$5,422	\$10,613	\$5,422	\$10,613
12	4366	Box Hill Institute	442	245.8	\$5,641,327	\$4,945	\$5,636,169	\$12,763	\$22,953	\$12,752	\$22,932
13	3034	Royal Melbourne Institute of Technology	991	839.2	\$5,025,270	\$7,906	\$5,017,364	\$5,071	\$5,988	\$5,063	\$5,979
14	7403	Access Group Training Pty Limited	734	545.6	\$4,771,900	\$0	\$4,771,900	\$6,501	\$8,746	\$6,501	\$8,746
15	7012	Australian Education Group Pty Ltd	295	298.5	\$4,523,000	\$0	\$4,523,000	\$15,332	\$15,152	\$15,332	\$15,152
16	7197	Proteus Technologies Pty Ltd	428	311.4	\$4,253,855	\$9,500	\$4,244,355	\$9,939	\$13,659	\$9,917	\$13,629
17	7301	Niche Education Group Pty Ltd	565	262.6	\$4,245,094	\$3,567	\$4,241,527	\$7,513	\$16,163	\$7,507	\$16,149
18	7203	BCA National Training Group Pty Ltd	523	319.4	\$4,326,486	\$139,562	\$4,186,924	\$8,272	\$13,546	\$8,006	\$13,110
19	7094	Basair Australia Pty Ltd	120	58.5	\$3,946,726	\$5,989	\$3,918,273	\$32,889	\$67,431	\$32,652	\$66,945
20	7329	The French Beauty Academy Pty Ltd	299	176.2	\$3,953,645	\$62,568	\$3,891,078	\$13,223	\$22,441	\$13,014	\$22,086
21	7338	TAFE SA	1,426	441.2	\$3,696,009	\$14,986	\$3,681,023	\$2,592	\$8,377	\$2,581	\$8,343
22	7396	Australis College Pty Ltd	532	400.1	\$3,705,252	\$26,659	\$3,646,757	\$6,965	\$9,262	\$6,855	\$9,116
23	4336	Navitas Professional Institute Pty Ltd	673	251.2	\$3,606,300	\$0	\$3,606,300	\$5,359	\$14,354	\$5,359	\$14,354
24	7251	Health Skills Australia Pty Ltd	510	266.6	\$4,469,952	\$1,153,764	\$3,316,188	\$8,765	\$16,765	\$6,502	\$12,438
25	7394	Management Consultancy International Pty Limited	511	303.5	\$3,120,638	\$16,353	\$3,104,285	\$6,107	\$10,284	\$6,075	\$10,230
26	7309	SMR Learning Services Pty Ltd	380	238.6	\$2,978,894	\$0	\$2,978,894	\$7,839	\$12,486	\$7,839	\$12,486
27	2177	Swinburne University of Technology	650	336.0	\$2,779,661	\$4,238	\$2,775,423	\$4,276	\$8,273	\$4,270	\$8,260
28	7360	Bruce Hartwig Flying School Pty Ltd	65	39.5	\$2,637,417	\$0	\$2,594,235	\$40,576	\$66,816	\$39,911	\$65,722
29	4383	Holmesglen Institute of TAFE	770	575.5	\$2,564,175	\$4,749	\$2,559,426	\$3,330	\$4,456	\$3,324	\$4,447
30	7073	Chisholm Institute of Technical and Further Education	790	310.4	\$2,544,917	\$1,031	\$2,543,886	\$3,221	\$8,198	\$3,220	\$8,194
31	8071	North Metropolitan TAFE	605	362.0	\$2,268,867	\$0	\$2,268,867	\$3,750	\$6,267	\$3,750	\$6,267
32	7274	Access Training Institute Pty Ltd	318	162.8	\$2,244,873	\$0	\$2,244,873	\$7,059	\$13,787	\$7,059	\$13,787
33	7088	College of Complementary Medicine NSW Pty Ltd	184	195.6	\$2,291,116	\$60,462	\$2,230,654	\$12,452	\$11,716	\$12,123	\$11,407
34	7521	Malekhu Investments Pty. Ltd.	253	131.7	\$2,177,810	\$0	\$2,175,224	\$8,608	\$16,542	\$8,598	\$16,522
35	7747	Talentmed Pty Ltd	446	321.1	\$2,035,200	\$0	\$2,035,200	\$4,563	\$6,338	\$4,563	\$6,338
36	7377	Churchill Education Pty Ltd as trustee for Decelle Investment Trust	274	151.7	\$1,799,276	\$0	\$1,799,276	\$6,567	\$11,859	\$6,567	\$11,859
37	3007	Victoria University	568	269.0	\$1,783,349	\$405	\$1,782,944	\$3,140	\$6,629	\$3,139	\$6,628
38	7382	Strategix Training Group Pty Ltd	243	117.0	\$1,697,580	\$0	\$1,696,397	\$6,986	\$14,510	\$6,981	\$14,500
39	7143	Australian Wings Academy Pty Ltd	46	24.1	\$1,702,729	\$19,941	\$1,682,482	\$37,016	\$70,732	\$36,576	\$69,891

Rank	Provider ID	Provider name	Students	EFTSL	Tuition fees	Paid upfront	Loans paid	Tuition fees per student	Tuition fees per EFTSL	Loans per student	Loans per EFTSL
40	7159	Emma's Secret Investments Pty Ltd	197	102.4	\$1,549,063	\$0	\$1,549,063	\$7,863	\$15,131	\$7,863	\$15,131
41	7826	Tandem College Pty Ltd	150	101.0	\$1,515,234	\$0	\$1,515,234	\$10,102	\$15,005	\$10,102	\$15,005
42	7155	Australian Institute of Family Counselling Ltd	297	155.1	\$1,467,868	\$644	\$1,467,224	\$4,942	\$9,465	\$4,940	\$9,460
43	7172	Flight Training Adelaide Pty Ltd	48	22.3	\$1,511,640	\$103,064	\$1,408,576	\$31,493	\$67,756	\$29,345	\$63,137
44	4371	SAE Institute Pty Limited	204	80.0	\$1,397,184	\$0	\$1,397,184	\$6,849	\$17,466	\$6,849	\$17,466
45	7023	International Film School Sydney Pty Ltd	54	46.5	\$1,339,000	\$0	\$1,327,490	\$24,796	\$28,796	\$24,583	\$28,548
46	7235	Mater Education Limited	164	107.9	\$1,288,889	\$6,706	\$1,282,184	\$7,859	\$11,942	\$7,818	\$11,880
47	7742	Demi International Beauty Academy Pty Ltd	146	97.8	\$1,269,588	\$5,268	\$1,264,320	\$8,696	\$12,988	\$8,660	\$12,934
48	7244	Kirana Training Pty Ltd	226	101.7	\$1,260,283	\$3	\$1,260,280	\$5,576	\$12,397	\$5,576	\$12,397
49	4376	Nature Care College Pty Ltd	156	99.2	\$1,227,165	\$430	\$1,226,154	\$7,866	\$12,369	\$7,860	\$12,358
50	7145	Goulburn Ovens Institute of TAFE	292	107.2	\$1,215,777	\$1,110	\$1,214,667	\$4,164	\$11,339	\$4,160	\$11,329
51	7082	Bendigo Kangan Institute	332	213.6	\$1,227,662	\$16,365	\$1,211,297	\$3,698	\$5,749	\$3,648	\$5,672
52	7091	The Health Arts College Pty Ltd	123	57.7	\$1,158,081	\$0	\$1,158,081	\$9,415	\$20,078	\$9,415	\$20,078
53	7478	Virtu Design Institute Pty Limited	156	75.8	\$1,087,200	\$0	\$1,087,200	\$6,969	\$14,339	\$6,969	\$14,339
54	4363	Melbourne Polytechnic	294	223.2	\$1,060,098	\$0	\$1,060,098	\$3,606	\$4,751	\$3,606	\$4,751
55	7321	Australian Institute of Fashion Design Pty Ltd	130	62.6	\$1,020,063	\$0	\$1,020,063	\$7,847	\$16,297	\$7,847	\$16,297
56	7336	New York Film Academy Australia Pty Ltd	78	27.3	\$984,750	\$0	\$984,750	\$12,625	\$36,138	\$12,625	\$36,138
57	7306	Health Careers International Pty Ltd	156	122.6	\$1,397,427	\$442,728	\$954,699	\$8,958	\$11,394	\$6,120	\$7,784
58	7372	Unity College Australia Incorporated	135	86.5	\$950,425	\$2,819	\$947,606	\$7,040	\$10,982	\$7,019	\$10,949
59	7110	Workers Educational Association - Hunter	44	60.4	\$946,750	\$0	\$946,750	\$21,517	\$15,675	\$21,517	\$15,675
60	7334	Performing Arts Education Pty Ltd	61	46.1	\$929,950	\$0	\$929,950	\$15,245	\$20,177	\$15,245	\$20,177
61	4468	South Metropolitan TAFE	205	98.2	\$973,524	\$49,403	\$924,120	\$4,749	\$9,912	\$4,508	\$9,409
62	7407	Air Gold Coast Pty. Ltd.	32	17.3	\$908,936	\$0	\$908,936	\$28,404	\$52,479	\$28,404	\$52,479
63	2200	Central Queensland University	262	141.8	\$884,020	\$120	\$883,900	\$3,374	\$6,236	\$3,374	\$6,235
64	7032	YourLife Health and Learning Inc	127	88.6	\$864,425	\$541	\$863,884	\$6,807	\$9,761	\$6,802	\$9,755
65	7412	Southern Aviation Pty Ltd	26	12.9	\$851,937	\$2,547	\$849,391	\$32,767	\$66,042	\$32,669	\$65,844
66	7340	Actors College of Theatre & Television Pty Ltd	56	46.0	\$819,000	\$0	\$819,000	\$14,625	\$17,804	\$14,625	\$17,804
67	7049	Golf Education Australia Pty Ltd	51	21.0	\$805,400	\$0	\$805,400	\$15,792	\$38,426	\$15,792	\$38,426
68	7158	Accredited Courses Australia Pty Ltd	46	34.5	\$777,975	\$0	\$777,975	\$16,913	\$22,550	\$16,913	\$22,550
69	7122	PA & WJ Dow Pty Ltd	17	8.7	\$750,600	\$0	\$750,600	\$44,153	\$86,375	\$44,153	\$86,375
70	7517	Alderdice & Associates Pty. Limited ATF Alderdice & Associates Trust	78	40.0	\$742,000	\$0	\$742,000	\$9,513	\$18,550	\$9,513	\$18,550
71	7185	Oakhill Education Group Australia Pty Ltd	91	60.6	\$699,826	\$0	\$702,826	\$7,690	\$11,553	\$7,723	\$11,602
72	7020	Ella Bache College Pty Ltd	100	43.0	\$693,947	\$13,419	\$680,529	\$6,939	\$16,154	\$6,805	\$15,842
73	4341	Harvest Bible College Inc	124	50.6	\$671,975	\$0	\$671,975	\$5,419	\$13,268	\$5,419	\$13,268
74	7536	Australian Institute of Fitness Pty Ltd	92	41.9	\$642,881	\$3,000	\$639,881	\$6,988	\$15,351	\$6,955	\$15,279
75	4372	Gordon Institute of TAFE	197	112.8	\$608,053	\$638	\$607,416	\$3,087	\$5,391	\$3,083	\$5,385
76	7371	Sydney Theatre Management Pty. Limited	34	32.0	\$572,800	\$0	\$572,800	\$16,847	\$17,900	\$16,847	\$17,900
77	7460	TasTAFE	227	319.0	\$555,682	\$0	\$555,682	\$2,448	\$1,742	\$2,448	\$1,742
78	7035	Photography Holdings Pty. Ltd. as trustee for Photography Studies College (Melbourne) Unit Trust	25	24.3	\$541,500	\$0	\$541,500	\$21,660	\$22,266	\$21,660	\$22,266
79	7086	Charlton Brown Pty Ltd	180	67.1	\$538,135	\$0	\$538,135	\$2,990	\$8,022	\$2,990	\$8,022
80	7465	The Mask Academy Pty Ltd	84	34.9	\$517,384	\$0	\$517,384	\$6,159	\$14,812	\$6,159	\$14,812

Rank	Provider ID	Provider name	Students	EFTSL	Tuition fees	Paid upfront	Loans paid	Tuition fees per student	Tuition fees per EFTSL	Loans per student	Loans per EFTSL
81	4361	Australian College of Natural Medicine Pty Ltd	98	45.6	\$516,411	\$0	\$516,411	\$5,270	\$11,334	\$5,270	\$11,334
82	7307	Empowerment Options Pty Ltd ATF Empowerment Options Family Trust	115	56.0	\$493,104	\$0	\$493,104	\$4,288	\$8,810	\$4,288	\$8,810
83	7729	Global Training Institute Pty Ltd	40	22.4	\$487,625	\$0	\$487,625	\$12,191	\$21,748	\$12,191	\$21,748
84	7068	Federation Training	160	78.8	\$487,113	\$589	\$486,524	\$3,044	\$6,184	\$3,041	\$6,176
85	7124	Academy of Information Technology Pty Ltd	88	29.4	\$483,293	\$0	\$483,293	\$5,492	\$16,454	\$5,492	\$16,454
86	7390	The Holistic Healing Company Pty Limited	81	44.6	\$482,499	\$0	\$482,499	\$5,957	\$10,831	\$5,957	\$10,831
87	7701	Aurora Training Institute Pty Ltd	65	41.3	\$475,013	\$0	\$475,013	\$7,308	\$11,515	\$7,308	\$11,515
88	4377	UOWC Ltd	49	29.7	\$464,833	\$2,403	\$462,430	\$9,486	\$15,672	\$9,437	\$15,591
89	2154	Federation University Australia	131	63.4	\$454,342	\$50	\$454,292	\$3,468	\$7,166	\$3,468	\$7,165
90	7381	Screenwise Pty. Limited	28	13.8	\$453,750	\$0	\$453,750	\$16,205	\$33,000	\$16,205	\$33,000
91	3006	Australian Catholic University Limited	131	68.9	\$491,515	\$49,833	\$441,681	\$3,752	\$7,134	\$3,372	\$6,411
92	7009	Baptist Business College Ltd	64	45.8	\$437,686	\$0	\$437,686	\$6,839	\$9,567	\$6,839	\$9,567
93	7131	Transformations - Pathways to Competence & Developing Excellence Pty Ltd	110	80.7	\$418,114	\$0	\$418,114	\$3,801	\$5,182	\$3,801	\$5,182
94	7395	Smart City Vocational College Pty. Ltd.	73	33.0	\$406,666	\$0	\$406,666	\$5,571	\$12,317	\$5,571	\$12,317
95	7685	Australian Institute of Higher and Further Education Pty Ltd	67	27.2	\$400,768	\$0	\$400,768	\$5,982	\$14,738	\$5,982	\$14,738
96	7276	Contour Systems Pty Ltd	60	23.5	\$394,194	\$0	\$394,194	\$6,570	\$16,788	\$6,570	\$16,788
97	4394	William Angliss Institute of TAFE	78	47.2	\$382,786	\$35	\$382,751	\$4,908	\$8,105	\$4,907	\$8,104
98	7504	Australian Careers Institute Pty Ltd	68	22.8	\$376,046	\$0	\$376,046	\$5,530	\$16,522	\$5,530	\$16,522
99	7568	Australian College of Finance Pty Limited	47	21.5	\$373,933	\$0	\$373,933	\$7,956	\$17,384	\$7,956	\$17,384
100	7502	Mint Training Pty Limited	45	27.4	\$367,355	\$0	\$366,862	\$8,163	\$13,404	\$8,152	\$13,386
101	4407	Alphacrucis College Limited	125	52.0	\$366,130	\$330	\$365,800	\$2,929	\$7,036	\$2,926	\$7,029
102	7369	Shafston House College Ltd	52	23.3	\$359,402	\$0	\$359,402	\$6,912	\$15,438	\$6,912	\$15,438
103	8072	South Regional TAFE	96	63.1	\$343,011	\$0	\$343,011	\$3,573	\$5,436	\$3,573	\$5,436
104	7347	Design Schools Australia Pty Ltd	43	29.7	\$341,015	\$0	\$341,015	\$7,931	\$11,485	\$7,931	\$11,485
105	7118	Wodonga Institute of TAFE	146	65.8	\$329,504	\$0	\$329,504	\$2,257	\$5,005	\$2,257	\$5,005
106	7495	International Screen Academy Pty Limited	21	15.5	\$321,800	\$0	\$321,800	\$15,324	\$20,761	\$15,324	\$20,761
107	7461	New England Institute of Technology Pty Ltd	41	20.0	\$310,000	\$0	\$310,000	\$7,561	\$15,477	\$7,561	\$15,477
108	7358	Partners in Training Australia Pty. Ltd.	82	62.9	\$309,799	\$0	\$309,799	\$3,778	\$4,924	\$3,778	\$4,924
109	7378	Shakra Pty Ltd	39	19.7	\$314,000	\$6,375	\$307,625	\$8,051	\$15,963	\$7,888	\$15,639
110	7150	Nicolie O'Neill Kinesiology Pty Ltd	55	37.2	\$305,525	\$0	\$305,525	\$5,555	\$8,204	\$5,555	\$8,204
111	7147	Sydney Film School Pty Ltd	24	12.3	\$304,500	\$0	\$304,500	\$12,688	\$24,857	\$12,688	\$24,857
112	7600	Elite Training & Development Pty Ltd	41	18.0	\$286,200	\$0	\$286,200	\$6,980	\$15,944	\$6,980	\$15,944
113	7161	Wealth Within Institute Pty Ltd	46	21.8	\$266,577	\$0	\$266,577	\$5,795	\$12,240	\$5,795	\$12,240
114	7278	Royal Victorian Aero Club	9	6.1	\$260,589	\$100	\$260,489	\$28,954	\$43,073	\$28,943	\$43,056
115	4458	Australian Institute of Management Education and Training Pty Limited	51	20.2	\$252,449	\$0	\$252,449	\$4,950	\$12,473	\$4,950	\$12,473
116	7325	LaTrobe International Galleries Pty. Ltd.	25	15.9	\$244,270	\$0	\$244,270	\$9,771	\$15,323	\$9,771	\$15,323
117	7205	Visual Concepts & Design Australia Pty Ltd	19	9.5	\$240,374	\$0	\$240,374	\$12,651	\$25,303	\$12,651	\$25,303
118	7142	South West Institute of TAFE	76	51.6	\$240,203	\$479	\$239,723	\$3,161	\$4,653	\$3,154	\$4,643
119	7401	Jigsaw Consulting Group Pty Ltd	34	16.8	\$239,622	\$0	\$239,622	\$7,048	\$14,280	\$7,048	\$14,280
120	7365	Franklyn Scholar (Australia) Pty Ltd	36	10.9	\$238,800	\$0	\$238,800	\$6,633	\$21,888	\$6,633	\$21,888
121	7429	CMA Training Group Pty Ltd	59	23.4	\$237,712	\$0	\$237,712	\$4,029	\$10,146	\$4,029	\$10,146
122	7229	Australian Nursing & Midwifery Federation (SA Branch)	64	29.4	\$236,007	\$0	\$236,007	\$3,688	\$8,033	\$3,688	\$8,033

Rank	Provider ID	Provider name	Students	EFTSL	Tuition fees	Paid upfront	Loans paid	Tuition fees per student	Tuition fees per EFTSL	Loans per student	Loans per EFTSL
123	7333	Menzies Institute of Technology Pty Ltd	31	14.6	\$227,236	\$1,867	\$225,369	\$7,330	\$15,512	\$7,270	\$15,384
124	4406	Canberra Institute of Technology	116	50.8	\$229,737	\$5,027	\$224,710	\$1,980	\$4,525	\$1,937	\$4,426
125	7223	CALAM Training Ltd	37	37.5	\$222,360	\$0	\$222,360	\$6,010	\$5,925	\$6,010	\$5,925
126	7312	Stirling Institute of Australia Pty Ltd	30	17.7	\$221,667	\$0	\$221,667	\$7,389	\$12,548	\$7,389	\$12,548
127	7683	The Redcliffe Aero Club	6	2.2	\$223,468	\$0	\$220,594	\$37,245	\$103,171	\$36,766	#####
128	8073	Central Regional TAFE	53	39.0	\$215,044	\$0	\$215,044	\$4,057	\$5,520	\$4,057	\$5,520
129	7052	Melbourne Rudolf Steiner Seminar Ltd	22	20.8	\$195,050	\$0	\$195,050	\$8,866	\$9,400	\$8,866	\$9,400
130	7648	SCA Hair & Beauty Academy Pty Ltd	17	13.5	\$190,804	\$0	\$190,804	\$11,224	\$14,165	\$11,224	\$14,165
131	7271	Rycki Symons Pty Limited	24	11.1	\$186,278	\$0	\$186,278	\$7,762	\$16,808	\$7,762	\$16,808
132	7590	Melbourne College of Hairdressing Beauty Therapy & Natural Medicine Pty Ltd	23	11.2	\$173,040	\$0	\$173,040	\$7,523	\$15,454	\$7,523	\$15,454
133	7189	Australian College of Health & Fitness Pty Ltd	70	27.0	\$172,297	\$0	\$172,297	\$2,461	\$6,381	\$2,461	\$6,381
134	7262	EQUALS International (Aust) Pty Ltd	53	18.6	\$176,337	\$4,515	\$171,822	\$3,327	\$9,471	\$3,242	\$9,229
135	7239	Southern Cross Education Institute Pty Ltd	26	14.3	\$171,262	\$0	\$171,262	\$6,587	\$12,014	\$6,587	\$12,014
136	7213	Dazzle-M Pty Ltd	34	15.5	\$169,000	\$2,267	\$166,733	\$4,971	\$10,875	\$4,904	\$10,729
137	7026	Australian College of Sports Therapy Pty Ltd	45	13.1	\$161,927	\$1,732	\$160,194	\$3,598	\$12,332	\$3,560	\$12,200
138	7058	Jschool: Journalism Education & Training Pty Ltd	17	8.1	\$160,089	\$0	\$160,089	\$9,417	\$19,856	\$9,417	\$19,856
139	7163	Australian National Memorial Theatre Limited	18	17.9	\$155,083	\$0	\$155,083	\$8,616	\$8,674	\$8,616	\$8,674
140	7047	Hope of the Gold Coast Ltd	53	28.6	\$154,902	\$0	\$154,902	\$2,923	\$5,421	\$2,923	\$5,421
141	7056	The Malka Group Pty. Ltd.	38	17.3	\$141,248	\$0	\$141,248	\$3,717	\$8,181	\$3,717	\$8,181
142	7280	Job Training Institute Pty Ltd	18	13.3	\$132,019	\$0	\$132,019	\$7,334	\$9,904	\$7,334	\$9,904
143	7349	Victorian Fitness Academy Pty Ltd	23	13.0	\$131,667	\$0	\$131,667	\$5,725	\$10,138	\$5,725	\$10,138
144	7363	Australian College of Event Management Pty Ltd	28	3.5	\$131,250	\$2,188	\$129,063	\$4,688	\$37,500	\$4,609	\$36,875
145	7036	MEGT (Australia) Ltd.	22	7.0	\$124,967	\$0	\$124,967	\$5,680	\$17,852	\$5,680	\$17,852
146	7756	Australian College of Fitness and Bodywork Pty Ltd	41	15.6	\$125,308	\$6,355	\$118,953	\$3,056	\$8,008	\$2,901	\$7,602
147	7141	Asia Pacific Training Institute Pty. Ltd.	18	4.9	\$111,282	\$0	\$111,282	\$6,182	\$22,804	\$6,182	\$22,804
148	7245	Holmes Commercial Colleges (Melbourne) Ltd	8	5.9	\$111,000	\$2,455	\$108,545	\$13,875	\$18,894	\$13,568	\$18,476
149	3044	The University of Notre Dame Australia	33	17.4	\$104,860	\$0	\$104,860	\$3,178	\$6,020	\$3,178	\$6,020
150	7463	Cronin Pty Ltd	17	6.3	\$99,500	\$0	\$99,500	\$5,853	\$15,920	\$5,853	\$15,920
151	7553	Australian Salesmasters Training Co. Pty Limited	14	5.6	\$91,000	\$0	\$91,000	\$6,500	\$16,250	\$6,500	\$16,250
152	7010	Republica Education Pty Ltd	13	5.2	\$92,320	\$6,982	\$85,338	\$7,102	\$17,720	\$6,564	\$16,380
153	2252	Avondale College Limited	6	5.9	\$82,968	\$100	\$82,868	\$13,828	\$14,029	\$13,811	\$14,012
154	7102	Sunraysia Institute of TAFE	45	25.2	\$81,530	\$0	\$81,530	\$1,812	\$3,237	\$1,812	\$3,237
155	7425	Adamattrin Pty Ltd as Trustee for Mesaric Family Trust	11	5.0	\$76,834	\$0	\$76,834	\$6,985	\$15,367	\$6,985	\$15,367
156	7261	The International Golf Institute Pty Ltd	8	3.3	\$74,250	\$0	\$74,250	\$9,281	\$22,706	\$9,281	\$22,706
157	7405	Advanced Education Australia Pty Ltd	7	3.7	\$73,400	\$0	\$73,400	\$10,486	\$20,000	\$10,486	\$20,000
158	3001	Charles Darwin University	35	11.5	\$70,977	\$0	\$70,977	\$2,028	\$6,168	\$2,028	\$6,168
159	7093	Marr Mooditj Training	18	13.4	\$69,490	\$99	\$69,391	\$3,861	\$5,187	\$3,855	\$5,180
160	7041	Sydney Institute of Health Sciences Pty. Limited	19	10.1	\$65,020	\$0	\$65,020	\$3,422	\$6,407	\$3,422	\$6,407
161	7437	MVJ Enterprises Pty Ltd	19	6.3	\$64,100	\$0	\$64,100	\$3,374	\$10,256	\$3,374	\$10,256
162	7473	LTT Group Pty Ltd	13	7.1	\$64,009	\$0	\$64,009	\$4,924	\$9,041	\$4,924	\$9,041
163	7380	Kreate Pty Ltd	30	10.3	\$63,838	\$0	\$63,838	\$2,128	\$6,228	\$2,128	\$6,228
164	7523	Orion Training and Performance Management Pty Ltd	9	4.0	\$61,175	\$0	\$61,175	\$6,797	\$15,409	\$6,797	\$15,409

Rank	Provider ID	Provider name	Students	EFTSL	Tuition fees	Paid upfront	Loans paid	Tuition fees per student	Tuition fees per EFTSL	Loans per student	Loans per EFTSL
165	7626	Passmores' Foundation Limited	6	3.5	\$56,333	\$0	\$56,333	\$9,389	\$16,310	\$9,389	\$16,310
166	7230	Foundation for Education & Training Ltd	8	6.6	\$62,081	\$7,170	\$54,911	\$7,760	\$9,371	\$6,864	\$8,289
167	7541	Australasian Beauty Therapy Academy Pty Ltd	15	6.3	\$53,100	\$0	\$53,100	\$3,540	\$8,469	\$3,540	\$8,469
168	7027	Kal Multimedia Training Pty Ltd	15	5.6	\$51,372	\$0	\$51,372	\$3,425	\$9,094	\$3,425	\$9,094
169	7007	ParaPharm Pty Ltd	10	4.2	\$49,075	\$0	\$49,075	\$4,907	\$11,657	\$4,907	\$11,657
170	7449	Anglican Church Property Trust Diocese of Canberra & Goulburn	12	14.0	\$44,850	\$0	\$44,850	\$3,738	\$3,204	\$3,738	\$3,204
171	7443	The Australian Academy of Business Pty Ltd as Trustee for the Australian Academy of Business Unit Trust	8	2.6	\$44,550	\$0	\$44,550	\$5,569	\$17,249	\$5,569	\$17,249
172	7628	Alertforce Pty Ltd	8	3.1	\$42,227	\$0	\$42,227	\$5,278	\$13,692	\$5,278	\$13,692
173	7423	Australian College of Commerce & Management Pty Ltd	19	7.0	\$40,107	\$0	\$40,107	\$2,111	\$5,730	\$2,111	\$5,730
174	7326	The Australian College of Hair Design and Beauty Pty Ltd	9	2.5	\$39,932	\$0	\$39,932	\$4,437	\$15,785	\$4,437	\$15,785
175	7108	Australian Academy of Vocational Education and Trades Pty Ltd	5	4.0	\$39,258	\$0	\$39,258	\$7,852	\$9,814	\$7,852	\$9,814
176	7697	The Lady Gowrie Child Centre Melbourne Inc	14	13.4	\$33,382	\$0	\$33,382	\$2,384	\$2,497	\$2,384	\$2,497
177	7345	Australia Moreton Education Group Pty Ltd	7	2.7	\$32,787	\$0	\$32,787	\$4,684	\$12,280	\$4,684	\$12,280
178	7111	Design College Australia Pty Ltd	8	2.3	\$40,932	\$8,301	\$32,631	\$5,117	\$17,719	\$4,079	\$14,126
179	8060	North Regional TAFE	12	6.4	\$31,492	\$0	\$31,492	\$2,624	\$4,892	\$2,624	\$4,892
180	7267	Uniting Institute of Education Ltd	10	10.2	\$30,922	\$0	\$30,922	\$3,092	\$3,023	\$3,092	\$3,023
181	7585	House of Learning Pty Ltd	<5	2.0	\$24,920	\$0	\$24,920	n.p.	\$12,459	n.p.	\$12,459
182	2148	The National Institute of Dramatic Art	9	2.3	\$24,750	\$0	\$24,750	\$2,750	\$11,000	\$2,750	\$11,000
183	7646	Australian Skills Group Pty Ltd	<5	2.0	\$20,000	\$0	\$20,000	n.p.	\$10,000	n.p.	\$10,000
184	7206	Century Group Pty Ltd	<5	1.4	\$17,000	\$0	\$17,000	n.p.	\$12,364	n.p.	\$12,364
185	7661	Kiama Community College Incorporated	8	3.0	\$16,128	\$0	\$16,128	\$2,016	\$5,340	\$2,016	\$5,340
186	7144	Benchmark Resources Pty Ltd	13	5.3	\$16,101	\$0	\$16,101	\$1,239	\$3,067	\$1,239	\$3,067
187	7663	Innovative Business Training Pty Ltd	<5	1.0	\$16,080	\$0	\$16,080	n.p.	\$16,750	n.p.	\$16,750
188	7341	Merage Group Pty Ltd	8	2.3	\$13,409	\$0	\$13,409	\$1,676	\$5,960	\$1,676	\$5,960
189	7370	GP Links Wide Bay Ltd	<5	1.0	\$12,150	\$0	\$12,150	n.p.	\$12,150	n.p.	\$12,150
190	7441	Impact Training Centre Ltd	<5	0.9	\$11,133	\$0	\$11,133	n.p.	\$12,234	n.p.	\$12,234
191	7080	Pharmaceutical Society of Australia Limited	6	3.5	\$10,250	\$0	\$10,250	\$1,708	\$2,962	\$1,708	\$2,962
192	7384	The Learning Workshop Pty Ltd	6	1.9	\$9,375	\$0	\$9,375	\$1,563	\$5,000	\$1,563	\$5,000
193	7566	Fox Endeavours Pty Ltd	<5	1.8	\$29,362	\$21,604	\$7,758	n.p.	\$16,312	n.p.	\$4,310
194	7819	Atkinson Training and Development Pty Limited	<5	1.0	\$5,564	\$0	\$5,564	n.p.	\$5,796	n.p.	\$5,796
195	7479	Queensland Agricultural Training Colleges	<5	1.0	\$5,300	\$0	\$5,300	n.p.	\$5,300	n.p.	\$5,300
196	4397	Sarina Russo Schools Australia Pty Ltd	<5	0.4	\$3,305	\$0	\$3,305	n.p.	\$9,053	n.p.	\$9,053
197	7030	Australian College of Applied Education Pty Ltd	<5	0.3	\$3,050	\$0	\$3,050	n.p.	\$12,200	n.p.	\$12,200
198	7428	The Creche and Kindergarten Association Limited	5	1.0	\$3,840	\$940	\$2,900	\$768	\$4,000	\$580	\$3,021
199	7361	MW Training Consultants Pty Ltd as trustee for The Morgan-Williams Family Trust	<5	0.9	\$2,400	\$0	\$2,400	n.p.	\$2,824	n.p.	\$2,824
200	7175	Australian College of Ministries	<5	0.4	\$2,320	\$0	\$2,320	n.p.	\$5,800	n.p.	\$5,800
201	7139	Community College Gippsland Ltd	<5	0.3	\$1,690	\$0	\$1,690	n.p.	\$6,688	n.p.	\$6,688
202	3019	University of Queensland	<5	1.0	\$1,568	\$0	\$1,568	n.p.	\$1,568	n.p.	\$1,568
203	7092	Australian Careers Business College Pty Ltd	<5	0.3	\$1,250	\$0	\$1,250	n.p.	\$5,000	n.p.	\$5,000
204	7535	Department of Training and Workforce Development	<5	0.1	\$955	\$0	\$955	n.p.	\$7,975	n.p.	\$7,975
		<b>Total:</b>	<b>47,602</b>	<b>25,972.2</b>	<b>\$310,788,308</b>	<b>\$3,021,385</b>	<b>\$307,630,755</b>	<b>\$6,529</b>	<b>\$11,966</b>	<b>\$6,463</b>	<b>\$11,845</b>



**Table 4: VFH courses ordered by VFH-assisted enrolments in 2017**

Rank	Course Code	Course name	Enrolments	EFTSL	Tuition fees	Paid upfront	Loans paid	Tuition fees per enrolment	Tuition fees per EFTSL	Loans per enrolment	Loans per EFTSL
1	HLT51612	Diploma of Nursing (Enrolled-Division 2 nursing)	7,456	4,061.1	\$40,713,347	\$1,364,164	\$39,349,183	\$5,460	\$10,025	\$5,278	\$9,689
2	CHC50113	Diploma of Early Childhood Education and Care	4,362	2,693.7	\$19,862,889	\$50,964	\$19,811,925	\$4,554	\$7,374	\$4,542	\$7,355
3	CHC52015	Diploma of Community Services	3,254	1,768.1	\$15,729,478	\$354,750	\$15,377,728	\$4,834	\$8,896	\$4,726	\$8,697
4	SHB50115	Diploma of Beauty Therapy	2,367	1,184.5	\$19,543,177	\$61,702	\$19,475,209	\$8,257	\$16,499	\$8,228	\$16,441
5	BSB50215	Diploma of Business	2,061	765.4	\$12,317,302	\$13,481	\$12,303,821	\$5,976	\$16,093	\$5,970	\$16,075
6	CHC51015	Diploma of Counselling	1,496	813.2	\$8,998,969	\$30,626	\$8,967,160	\$6,015	\$11,067	\$5,994	\$11,028
7	BSB51915	Diploma of Leadership and Management	1,377	545.7	\$7,784,872	\$57,019	\$7,726,424	\$5,654	\$14,267	\$5,611	\$14,160
8	BSB50415	Diploma of Business Administration	1,125	394.6	\$5,141,656	\$10,931	\$5,130,725	\$4,570	\$13,030	\$4,561	\$13,002
9	CHC50413	Diploma of Youth Work	946	488.3	\$4,772,310	\$15	\$4,772,295	\$5,045	\$9,774	\$5,045	\$9,774
10	10136NAT	Diploma of Nutrition (Non-Clinical Advisor)	911	693.0	\$4,356,574	\$0	\$4,356,574	\$4,782	\$6,287	\$4,782	\$6,287
11	CUA51015	Diploma of Screen and Media	884	456.4	\$8,659,421	\$8,479	\$8,650,941	\$9,796	\$18,975	\$9,786	\$18,956
12	MSF50213	Diploma of Interior Design and Decoration	783	339.4	\$4,484,321	\$3,624	\$4,480,697	\$5,727	\$13,212	\$5,722	\$13,202
13	HLT60512	Advanced Diploma of Naturopathy	753	509.0	\$5,914,939	\$2,825	\$5,911,532	\$7,855	\$11,622	\$7,851	\$11,615
14	FNS50215	Diploma of Accounting	724	249.5	\$2,650,983	\$8,992	\$2,641,991	\$3,662	\$10,625	\$3,649	\$10,589
15	HLT52015	Diploma of Remedial Massage	704	322.7	\$3,604,712	\$38,599	\$3,566,113	\$5,120	\$11,170	\$5,066	\$11,051
16	SIB50110	Diploma of Beauty Therapy	684	384.9	\$5,653,148	\$24,990	\$5,628,158	\$8,265	\$14,687	\$8,228	\$14,622
17	HLT61012	Advanced Diploma of Nutritional Medicine	671	356.5	\$4,933,353	\$1,420	\$4,931,933	\$7,352	\$13,837	\$7,350	\$13,833
18	10343NAT	Advanced Diploma of Professional Game Development	646	566.0	\$10,785,253	\$14,681	\$10,770,572	\$16,695	\$19,054	\$16,673	\$19,028
19	CPP50911	Diploma of Building Design	604	310.7	\$2,887,977	\$1,475	\$2,886,501	\$4,781	\$9,296	\$4,779	\$9,291
20	HLT54115	Diploma of Nursing	598	362.3	\$4,762,653	\$483,044	\$4,279,609	\$7,964	\$13,147	\$7,157	\$11,814
21	22268VIC	Advanced Diploma of Building Design (Architectural)	558	402.5	\$2,408,901	\$1,993	\$2,406,908	\$4,317	\$5,985	\$4,313	\$5,980
22	CHC51712	Diploma of Counselling	539	162.6	\$1,726,233	\$0	\$1,726,233	\$3,203	\$10,614	\$3,203	\$10,614
23	CPC50210	Diploma of Building and Construction (Building)	470	400.4	\$2,073,079	\$858	\$2,072,221	\$4,411	\$5,177	\$4,409	\$5,175
24	CUV50311	Diploma of Graphic Design	468	103.6	\$2,059,402	\$694	\$2,058,601	\$4,400	\$19,885	\$4,399	\$19,878
25	AVI50215	Diploma of Aviation (Commercial Pilot Licence - Aeroplane)	467	242.1	\$18,668,580	\$95,217	\$18,534,985	\$39,976	\$77,113	\$39,689	\$76,561
26	10478NAT	Diploma of Healthcare Documentation	446	321.1	\$2,035,200	\$0	\$2,035,200	\$4,563	\$6,338	\$4,563	\$6,338
27	BSB50615	Diploma of Human Resources Management	428	125.3	\$1,608,827	\$1,937	\$1,606,890	\$3,759	\$12,843	\$3,754	\$12,828
28	CUA50715	Diploma of Graphic Design	424	145.3	\$2,211,710	\$198	\$2,211,512	\$5,216	\$15,220	\$5,216	\$15,219
29	SIT50212	Diploma of Events	361	98.7	\$1,675,447	\$7,196	\$1,668,252	\$4,641	\$16,969	\$4,621	\$16,896
30	BSB51415	Diploma of Project Management	344	105.9	\$1,705,927	\$4,269	\$1,701,658	\$4,959	\$16,110	\$4,947	\$16,069
31	SIS50612	Diploma of Sport Development	333	175.7	\$3,154,883	\$0	\$3,154,883	\$9,474	\$17,960	\$9,474	\$17,960
32	52699WA	Advanced Diploma of Transpersonal Art Therapy	301	220.0	\$3,074,750	\$17,929	\$3,056,821	\$10,215	\$13,978	\$10,156	\$13,896
33	ICT50415	Diploma of Information Technology Networking	292	139.6	\$1,735,632	\$11,244	\$1,724,387	\$5,944	\$12,434	\$5,905	\$12,354
34	HLT57715	Diploma of Practice Management	277	159.8	\$1,417,745	\$0	\$1,417,745	\$5,118	\$8,869	\$5,118	\$8,869
35	SIT50313	Diploma of Hospitality	276	105.1	\$1,382,319	\$6,706	\$1,373,027	\$5,008	\$13,156	\$4,975	\$13,067
36	ICT50215	Diploma of Digital and Interactive Games	267	122.6	\$3,106,754	\$0	\$3,106,754	\$11,636	\$25,349	\$11,636	\$25,349
37	CUV50411	Diploma of Photo Imaging	258	55.5	\$985,818	\$1,476	\$984,342	\$3,821	\$17,773	\$3,815	\$17,747
38	ICT50615	Diploma of Website Development	253	101.5	\$1,346,780	\$7,493	\$1,339,287	\$5,323	\$13,269	\$5,294	\$13,196
39	CPP50307	Diploma of Property Services (Agency Management)	248	57.8	\$1,237,733	\$0	\$1,237,733	\$4,991	\$21,415	\$4,991	\$21,415

Rank	Course Code	Course name	Enrolments	EFTSL	Tuition fees	Paid upfront	Loans paid	Tuition fees per enrolment	Tuition fees per EFTSL	Loans per enrolment	Loans per EFTSL
40	CHC53315	Diploma of Mental Health	243	123.1	\$987,005	\$0	\$987,005	\$4,062	\$8,018	\$4,062	\$8,018
41	CUA50915	Diploma of Photography and Photo Imaging	230	73.8	\$1,206,982	\$2,298	\$1,204,684	\$5,248	\$16,346	\$5,238	\$16,315
42	CHC50313	Diploma of Child, Youth and Family Intervention	226	137.3	\$1,120,884	\$81,096	\$1,039,788	\$4,960	\$8,166	\$4,601	\$7,576
43	CUA60615	Advanced Diploma of Screen and Media	221	189.3	\$4,097,766	\$200	\$4,086,056	\$18,542	\$21,645	\$18,489	\$21,583
44	ICT50115	Diploma of Information Technology	198	92.5	\$1,108,165	\$0	\$1,108,165	\$5,597	\$11,977	\$5,597	\$11,977
45	CUF50407	Diploma of Specialist Make-up Services	185	69.9	\$1,123,550	\$0	\$1,123,550	\$6,073	\$16,066	\$6,073	\$16,066
46	LMT50307	Diploma of Applied Fashion Design and Technology	161	80.0	\$862,112	\$2,455	\$859,657	\$5,355	\$10,773	\$5,339	\$10,742
47	SIT50316	Diploma of Event Management	161	73.6	\$847,250	\$108	\$847,142	\$5,262	\$11,505	\$5,262	\$11,503
48	52709WA	Graduate Diploma of Cosmetic Nursing	161	67.4	\$1,232,030	\$1,300	\$1,230,730	\$7,652	\$18,293	\$7,644	\$18,274
49	CUS50209	Diploma of Sound Production	157	56.6	\$908,844	\$0	\$908,844	\$5,789	\$16,069	\$5,789	\$16,069
50	22228VIC	Advanced Diploma of Engineering Technology	155	100.9	\$565,973	\$184	\$565,789	\$3,651	\$5,608	\$3,650	\$5,606
51	CUF50107	Diploma of Screen and Media	153	55.6	\$1,108,801	\$0	\$1,108,801	\$7,247	\$19,957	\$7,247	\$19,957
52	CUA51115	Diploma of Visual Arts	153	53.5	\$560,466	\$2,877	\$557,589	\$3,663	\$10,475	\$3,644	\$10,421
53	CHC53215	Diploma of Alcohol and Other Drugs	150	99.0	\$728,896	\$755	\$728,140	\$4,859	\$7,359	\$4,854	\$7,351
54	BSB52115	Diploma of Library and Information Services	150	72.9	\$449,813	\$1,083	\$448,730	\$2,999	\$6,170	\$2,992	\$6,155
55	30968QLD	Diploma of Life Coaching	143	57.8	\$647,250	\$0	\$647,250	\$4,526	\$11,208	\$4,526	\$11,208
56	HLT60112	Advanced Diploma of Western Herbal Medicine	139	86.9	\$973,837	\$0	\$973,409	\$7,006	\$11,202	\$7,003	\$11,197
57	SIT60313	Advanced Diploma of Hospitality	137	80.0	\$1,491,661	\$24,786	\$1,466,875	\$10,888	\$18,649	\$10,707	\$18,340
58	CPC60115	Advanced Diploma of Building Surveying	134	111.9	\$701,033	\$4,620	\$696,413	\$5,232	\$6,266	\$5,197	\$6,225
59	52707WA	Graduate Diploma of Dermal Therapies	129	48.7	\$802,652	\$0	\$802,652	\$6,222	\$16,473	\$6,222	\$16,473
60	10566NAT	Diploma of Ministry and Theology (Stream)	124	50.6	\$671,975	\$0	\$671,975	\$5,419	\$13,268	\$5,419	\$13,268
61	10134NAT	Graduate Diploma of Counselling and Integrated Psychotherapy (Spiritual)	123	63.0	\$669,893	\$0	\$669,893	\$5,446	\$10,639	\$5,446	\$10,639
62	SIB70110	Graduate Certificate in Intense Pulsed Light and Laser Hair Reduction	118	50.2	\$452,575	\$3,057	\$449,518	\$3,835	\$9,017	\$3,809	\$8,956
63	MSL50116	Diploma of Laboratory Technology	116	78.5	\$497,376	\$997	\$496,379	\$4,288	\$6,334	\$4,279	\$6,321
64	ICT50915	Diploma of Digital Media Technologies	116	42.5	\$720,689	\$0	\$720,689	\$6,213	\$16,967	\$6,213	\$16,967
65	CHC50513	Diploma of Youth Justice	114	50.6	\$587,268	\$50	\$587,218	\$5,151	\$11,604	\$5,151	\$11,604
66	52698WA	Advanced Diploma of Transpersonal Counselling	113	83.4	\$1,165,215	\$1,000	\$1,164,215	\$10,312	\$13,969	\$10,303	\$13,957
67	22276VIC	Advanced Diploma of Legal Practice	109	77.5	\$357,980	\$116	\$357,864	\$3,284	\$4,621	\$3,283	\$4,620
68	BSB52215	Diploma of Legal Services	108	24.8	\$412,479	\$0	\$412,479	\$3,819	\$16,622	\$3,819	\$16,622
69	10487NAT	Advanced Diploma of Counselling and Family Therapy (Christian)	107	62.5	\$577,885	\$365	\$577,520	\$5,401	\$9,246	\$5,397	\$9,240
70	CUV50111	Diploma of Visual Arts	105	36.8	\$444,857	\$2,304	\$442,553	\$4,237	\$12,093	\$4,215	\$12,030
71	HLT52415	Diploma of Kinesiology	104	89.4	\$973,323	\$11,194	\$962,129	\$9,359	\$10,892	\$9,251	\$10,767
72	SIR50212	Diploma of Visual Merchandising	102	74.9	\$573,074	\$898	\$572,176	\$5,618	\$7,649	\$5,610	\$7,637
73	BSB51215	Diploma of Marketing	102	21.2	\$383,406	\$0	\$383,406	\$3,759	\$18,080	\$3,759	\$18,080
74	CHC53415	Diploma of Leisure and Health	95	68.3	\$394,393	\$2,227	\$392,166	\$4,152	\$5,774	\$4,128	\$5,741
75	ahc50410	Diploma of Horticulture	90	47.3	\$287,058	\$0	\$287,058	\$3,190	\$6,070	\$3,190	\$6,070
76	FNS60215	Advanced Diploma of Accounting	88	22.6	\$255,779	\$88	\$255,691	\$2,907	\$11,317	\$2,906	\$11,313
77	HLT55115	Diploma of Dental Technology	87	56.1	\$703,914	\$5,689	\$698,225	\$8,091	\$12,556	\$8,026	\$12,454
78	SIT50116	Diploma of Travel and Tourism Management	85	38.2	\$428,493	\$0	\$428,493	\$5,041	\$11,225	\$5,041	\$11,225
79	10017NAT	Diploma of Leadership (Insert Stream)	84	33.9	\$234,445	\$330	\$234,115	\$2,791	\$6,915	\$2,787	\$6,905
80	UEE62111	Advanced Diploma of Engineering Technology - Electrical	79	63.1	\$388,450	\$361	\$388,089	\$4,917	\$6,151	\$4,913	\$6,146
81	ICT50715	Diploma of Software Development	79	42.9	\$422,749	\$2,057	\$420,693	\$5,351	\$9,851	\$5,325	\$9,803

Rank	Course Code	Course name	Enrolments	EFTSL	Tuition fees	Paid upfront	Loans paid	Tuition fees per enrolment	Tuition fees per EFTSL	Loans per enrolment	Loans per EFTSL
82	CUA50815	Diploma of Music Industry	77	32.6	\$428,260	\$331	\$427,929	\$5,562	\$13,129	\$5,558	\$13,119
83	MEM60112	Advanced Diploma of Engineering	75	72.0	\$286,177	\$887	\$285,308	\$3,816	\$3,975	\$3,804	\$3,963
84	BSB61015	Advanced Diploma of Leadership and Management	75	22.9	\$316,954	\$2,075	\$314,879	\$4,226	\$13,868	\$4,198	\$13,777
85	AHC51110	Diploma of Conservation and Land Management	74	36.3	\$275,342	\$0	\$275,342	\$3,721	\$7,592	\$3,721	\$7,592
86	CUS50109	Diploma of Music	74	33.9	\$339,847	\$0	\$339,847	\$4,593	\$10,022	\$4,593	\$10,022
87	22248VIC	Advanced Diploma of Myotherapy	72	29.9	\$299,957	\$0	\$299,957	\$4,166	\$10,031	\$4,166	\$10,031
88	CHC50213	Diploma of School Age Education and Care	70	41.6	\$243,545	\$0	\$243,545	\$3,479	\$5,853	\$3,479	\$5,853
89	BSB80615	Graduate Diploma of Management (Learning)	69	42.9	\$879,040	\$200	\$878,840	\$12,740	\$20,500	\$12,737	\$20,495
90	40633SA	Advanced Diploma of Oral Health (Dental Hygiene)	69	38.2	\$462,392	\$5,538	\$456,854	\$6,701	\$12,107	\$6,621	\$11,962
91	39293QLD	Diploma of Justice Studies	69	15.3	\$140,800	\$0	\$140,800	\$2,041	\$9,199	\$2,041	\$9,199
92	10486NAT	Diploma of Counselling (Christian)	67	29.6	\$220,090	\$279	\$219,811	\$3,285	\$7,429	\$3,281	\$7,420
93	MEM50212	Diploma of Engineering - Technical	67	23.0	\$155,150	\$49	\$155,101	\$2,316	\$6,744	\$2,315	\$6,742
94	AHC50610	Diploma of Landscape Design	66	36.3	\$219,736	\$671	\$219,064	\$3,329	\$6,056	\$3,319	\$6,037
95	BSB51315	Diploma of Work Health and Safety	65	30.1	\$279,458	\$120	\$279,339	\$4,299	\$9,278	\$4,298	\$9,274
96	CUL50111	Diploma of Library and Information Services	65	17.6	\$87,307	\$0	\$87,307	\$1,343	\$4,966	\$1,343	\$4,966
97	MSF60113	Advanced Diploma of Interior Design	63	37.9	\$394,764	\$40	\$394,724	\$6,266	\$10,407	\$6,265	\$10,406
98	ICT50315	Diploma of Information Technology Systems Administration	63	21.3	\$348,623	\$5,647	\$342,976	\$5,534	\$16,339	\$5,444	\$16,074
99	LMT60307	Advanced Diploma of Applied Fashion Design and Technology	63	16.5	\$250,377	\$0	\$250,377	\$3,974	\$15,205	\$3,974	\$15,205
100	HLT57915	Diploma of Anaesthetic Technology	61	37.0	\$296,920	\$300	\$296,620	\$4,868	\$8,016	\$4,863	\$8,008
101	UEE60411	Advanced Diploma of Computer Systems Engineering	60	38.8	\$325,478	\$0	\$325,478	\$5,425	\$8,382	\$5,425	\$8,382
102	AVI50415	Diploma of Aviation (Instrument Rating)	57	22.4	\$1,358,686	\$7,335	\$1,293,177	\$23,837	\$60,734	\$22,687	\$57,806
103	SIT50112	Diploma of Travel and Tourism	57	14.2	\$203,703	\$231	\$203,472	\$3,574	\$14,335	\$3,570	\$14,319
104	MST50116	Diploma of Applied Fashion Design and Merchandising	54	23.3	\$378,347	\$0	\$378,347	\$7,006	\$16,269	\$7,006	\$16,269
105	30972QLD	Advanced Diploma of Screen and Stage Acting	53	38.7	\$756,700	\$0	\$756,700	\$14,277	\$19,548	\$14,277	\$19,548
106	10510NAT	Advanced Diploma of Cosmetic Dermal Science	53	26.3	\$406,458	\$0	\$406,458	\$7,669	\$15,455	\$7,669	\$15,455
107	10349NAT	Advanced Diploma of Stage and Screen Acting	52	44.0	\$788,000	\$0	\$788,000	\$15,154	\$17,909	\$15,154	\$17,909
108	22091VIC	Diploma of Professional Writing and Editing	51	26.4	\$177,046	\$100	\$176,946	\$3,471	\$6,709	\$3,470	\$6,705
109	BSB60215	Advanced Diploma of Business	51	26.2	\$303,186	\$0	\$303,186	\$5,945	\$11,591	\$5,945	\$11,591
110	10003NAT	Diploma of Mind Body Medicine	50	17.9	\$316,137	\$28,090	\$288,048	\$6,323	\$17,675	\$5,761	\$16,104
111	AHC51116	Diploma of Conservation and Land Management	49	40.4	\$222,692	\$171	\$222,521	\$4,545	\$5,511	\$4,541	\$5,507
112	SIT50416	Diploma of Hospitality Management	48	24.8	\$306,124	\$2,275	\$303,849	\$6,378	\$12,338	\$6,330	\$12,246
113	SHB50216	Diploma of Salon Management	48	9.0	\$188,585	\$0	\$188,585	\$3,929	\$20,852	\$3,929	\$20,852
114	10240NAT	Diploma of Clinical Hypnotherapy	47	24.8	\$312,500	\$0	\$312,500	\$6,649	\$12,626	\$6,649	\$12,626
115	10560NAT	Advanced Diploma of Performing Arts (Acting)	46	34.5	\$777,975	\$0	\$777,975	\$16,913	\$22,550	\$16,913	\$22,550
116	MSL50109	Diploma of Laboratory Technology	45	21.9	\$122,309	\$0	\$122,309	\$2,718	\$5,573	\$2,718	\$5,573
117	ACM50110	Diploma of Animal Technology	43	14.7	\$94,394	\$0	\$94,394	\$2,195	\$6,409	\$2,195	\$6,409
118	SIS50310	Diploma of Outdoor Recreation	42	14.8	\$145,435	\$189	\$145,246	\$3,463	\$9,814	\$3,458	\$9,801
119	10358NAT	Advanced Diploma of Integrative Complementary Medicine	41	32.6	\$335,166	\$9,700	\$325,466	\$8,175	\$10,276	\$7,938	\$9,979
120	22200VIC	Advanced Diploma of Justice	41	25.5	\$96,396	\$1,230	\$95,166	\$2,351	\$3,777	\$2,321	\$3,728
121	FNS50615	Diploma of Financial Planning	41	21.8	\$170,527	\$453	\$170,073	\$4,159	\$7,813	\$4,148	\$7,793
122	BSB61115	Advanced Diploma of Conveyancing	41	16.5	\$135,511	\$0	\$135,511	\$3,305	\$8,189	\$3,305	\$8,189
123	TLI50415	Diploma of Logistics	41	14.6	\$148,215	\$0	\$148,215	\$3,615	\$10,151	\$3,615	\$10,151

Rank	Course Code	Course name	Enrolments	EFTSL	Tuition fees	Paid upfront	Loans paid	Tuition fees per enrolment	Tuition fees per EFTSL	Loans per enrolment	Loans per EFTSL
124	10154NAT	Advanced Diploma of Therapeutic Arts in Counselling	41	14.0	\$139,339	\$0	\$139,339	\$3,399	\$9,964	\$3,399	\$9,964
125	UEE60211	Advanced Diploma of Electronics and Communications Engineering	40	22.3	\$158,590	\$112	\$158,478	\$3,965	\$7,110	\$3,962	\$7,105
126	10318NAT	Diploma of TESOL (Teaching English to Speakers of Other Languages)	40	20.2	\$111,688	\$0	\$111,688	\$2,792	\$5,528	\$2,792	\$5,528
127	SIS50213	Diploma of Fitness	40	13.5	\$190,637	\$0	\$190,637	\$4,766	\$14,135	\$4,766	\$14,135
128	10260NAT	Advanced Diploma of Arts (Acting)	39	34.9	\$595,389	\$548	\$594,842	\$15,266	\$17,057	\$15,252	\$17,042
129	10501NAT	Advanced Diploma of Clinical Hypnotherapy, Psychotherapy and Neuro-Linguistic Programming	39	19.8	\$170,000	\$0	\$170,000	\$4,359	\$8,586	\$4,359	\$8,586
130	SIS50712	Diploma of Sport and Recreation Management	38	23.5	\$155,550	\$0	\$155,550	\$4,093	\$6,615	\$4,093	\$6,615
131	HLT50512	Diploma of Dental Technology	38	14.9	\$241,996	\$0	\$241,996	\$6,368	\$16,262	\$6,368	\$16,262
132	22221VIC	Diploma of Product Design	37	33.0	\$200,385	\$74	\$200,311	\$5,416	\$6,074	\$5,414	\$6,072
133	CUF50207	Diploma of Interactive Digital Media	37	14.3	\$212,972	\$0	\$212,972	\$5,756	\$14,898	\$5,756	\$14,898
134	10234NAT	Diploma of Share Trading and Investment	36	17.2	\$204,533	\$0	\$204,533	\$5,681	\$11,919	\$5,681	\$11,919
135	10118NAT	Diploma of Social Media Marketing	36	16.2	\$104,900	\$759	\$104,141	\$2,914	\$6,488	\$2,893	\$6,441
136	10445NAT	Diploma of Ministry (Christian Studies) (Youth Work) (Pastoral Care) (Pastoral Counselling)	35	22.3	\$113,652	\$0	\$113,652	\$3,247	\$5,091	\$3,247	\$5,091
137	52763WA	Advanced Diploma of Functional Kinesiology	34	24.2	\$191,250	\$0	\$191,250	\$5,625	\$7,913	\$5,625	\$7,913
138	10167NAT	Advanced Diploma of Dermal Science and Therapies	34	18.8	\$448,875	\$1,800	\$447,075	\$13,202	\$23,940	\$13,149	\$23,844
139	FNS50315	Diploma of Finance and Mortgage Broking Management	34	16.4	\$157,440	\$0	\$157,440	\$4,631	\$9,619	\$4,631	\$9,619
140	22283VIC	Advanced Diploma of Business (Public Relations)	34	15.2	\$126,564	\$26	\$126,538	\$3,722	\$8,304	\$3,722	\$8,302
141	CHC81015	Graduate Diploma of Relationship Counselling	33	20.2	\$309,788	\$0	\$309,788	\$9,388	\$15,348	\$9,388	\$15,348
142	MEM60211	Advanced Diploma of Jewellery and Object Design	33	20.2	\$173,220	\$402	\$172,818	\$5,249	\$8,584	\$5,237	\$8,564
143	10030NAT	Diploma of Positive Psychology and Wellbeing	33	16.1	\$111,263	\$0	\$111,263	\$3,372	\$6,900	\$3,372	\$6,900
144	10454NAT	Diploma of Nutrition and Dietetics for Personal Trainers	33	14.4	\$116,214	\$0	\$116,214	\$3,522	\$8,070	\$3,522	\$8,070
145	TLI50410	Diploma of Logistics	33	10.3	\$189,452	\$0	\$189,452	\$5,741	\$18,348	\$5,741	\$18,348
146	10308NAT	Advanced Diploma of Professional Screenwriting	31	23.2	\$138,667	\$40	\$138,627	\$4,473	\$5,987	\$4,472	\$5,985
147	HLT62615	Advanced Diploma of Ayurveda	31	14.3	\$227,677	\$1,434	\$226,243	\$7,344	\$15,890	\$7,298	\$15,790
148	10036NAT	Diploma of Ministry (Insert Stream)	31	12.1	\$68,445	\$0	\$68,445	\$2,208	\$5,639	\$2,208	\$5,639
149	10074NAT	Advanced Diploma of Sports Therapy	31	10.6	\$143,703	\$632	\$143,071	\$4,636	\$13,606	\$4,615	\$13,546
150	HLT52115	Diploma of Traditional Chinese Medicine (TCM) Remedial Massage	30	13.6	\$121,756	\$0	\$121,756	\$4,059	\$8,957	\$4,059	\$8,957
151	10539NAT	Diploma of Leadership in Expressive Arts and Group Work	29	42.4	\$351,875	\$1,250	\$350,625	\$12,134	\$8,304	\$12,091	\$8,275
152	AVI50315	Diploma of Aviation (Commercial Pilot Licence - Helicopter)	29	13.0	\$1,637,223	\$20,368	\$1,616,854	\$56,456	\$125,747	\$55,754	\$124,182
153	AHC50110	Diploma of Agriculture	29	10.9	\$62,091	\$0	\$62,091	\$2,141	\$5,711	\$2,141	\$5,711
154	AHC50616	Diploma of Landscape Design	29	9.5	\$86,316	\$0	\$86,316	\$2,976	\$9,114	\$2,976	\$9,114
155	10065NAT	Diploma of Screen Acting	28	13.8	\$453,750	\$0	\$453,750	\$16,205	\$33,000	\$16,205	\$33,000
156	CHC52115	Diploma of Community Development	28	13.2	\$52,165	\$225	\$51,940	\$1,863	\$3,949	\$1,855	\$3,932
157	HLT60612	Advanced Diploma of Homoeopathy	27	15.8	\$160,168	\$0	\$160,168	\$5,932	\$10,168	\$5,932	\$10,168
158	10505NAT	Graduate Diploma of Arts Psychotherapy	27	14.1	\$229,400	\$800	\$228,600	\$8,496	\$16,260	\$8,467	\$16,204
159	BSB52015	Diploma of Conveyancing	27	10.5	\$62,398	\$0	\$62,398	\$2,311	\$5,917	\$2,311	\$5,917
160	HLT57415	Diploma of Audiometry	27	10.4	\$78,683	\$0	\$78,683	\$2,914	\$7,544	\$2,914	\$7,544
161	ICT60515	Advanced Diploma of Computer Systems Technology	26	10.8	\$50,237	\$254	\$49,983	\$1,932	\$4,645	\$1,922	\$4,622
162	SIB50210	Diploma of Salon Management	26	6.4	\$98,895	\$0	\$98,895	\$3,804	\$15,485	\$3,804	\$15,485
163	22197VIC	Diploma of Justice	25	25.9	\$40,067	\$1,489	\$38,578	\$1,603	\$1,546	\$1,543	\$1,489

Rank	Course Code	Course name	Enrolments	EFTSL	Tuition fees	Paid upfront	Loans paid	Tuition fees per enrolment	Tuition fees per EFTSL	Loans per enrolment	Loans per EFTSL
164	22176VIC	Advanced Diploma of Photography	25	24.3	\$541,500	\$0	\$541,500	\$21,660	\$22,266	\$21,660	\$22,266
165	AHC50416	Diploma of Horticulture	25	12.0	\$67,700	\$270	\$67,430	\$2,708	\$5,629	\$2,697	\$5,607
166	CUA50415	Diploma of Live Production and Technical Services	24	9.5	\$152,575	\$0	\$152,575	\$6,357	\$16,084	\$6,357	\$16,084
167	SIT60212	Advanced Diploma of Events	24	9.1	\$119,747	\$2,378	\$117,369	\$4,989	\$13,188	\$4,890	\$12,926
168	40629SA	Advanced Diploma of Arts (Professional Writing)	24	5.1	\$32,903	\$0	\$32,903	\$1,371	\$6,467	\$1,371	\$6,467
169	CUF60107	Advanced Diploma of Screen and Media	23	13.9	\$435,227	\$0	\$435,227	\$18,923	\$31,275	\$18,923	\$31,275
170	10428NAT	Diploma of Styling (Fashion, Image and Media)	23	13.5	\$222,741	\$0	\$222,741	\$9,684	\$16,506	\$9,684	\$16,506
171	HLT52315	Diploma of Clinical Aromatherapy	23	9.8	\$118,825	\$0	\$118,825	\$5,166	\$12,108	\$5,166	\$12,108
172	MST60116	Advanced Diploma of Applied Fashion Design and Merchandising	23	5.4	\$82,493	\$0	\$82,493	\$3,587	\$15,254	\$3,587	\$15,254
173	10527NAT	Advanced Diploma of Rudolf Steiner Education	22	20.8	\$195,050	\$0	\$195,050	\$8,866	\$9,400	\$8,866	\$9,400
174	BSB51615	Diploma of Quality Auditing	22	8.9	\$95,315	\$305	\$95,010	\$4,332	\$10,742	\$4,319	\$10,708
175	10130NAT	Advanced Diploma of Acting for Contemporary Screen Media	21	15.5	\$321,800	\$0	\$321,800	\$15,324	\$20,761	\$15,324	\$20,761
176	SIT60316	Advanced Diploma of Hospitality Management	21	13.0	\$161,962	\$35	\$161,927	\$7,712	\$12,430	\$7,711	\$12,428
177	CUV50211	Diploma of Ceramics	21	6.4	\$66,444	\$0	\$66,444	\$3,164	\$10,388	\$3,164	\$10,388
178	BSB52415	Diploma of Marketing and Communication	20	9.0	\$125,971	\$0	\$125,971	\$6,299	\$13,960	\$6,299	\$13,960
179	CUA60715	Advanced Diploma of Visual Arts	20	7.9	\$66,706	\$0	\$66,706	\$3,335	\$8,492	\$3,335	\$8,492
180	AVI50408	Diploma of Aviation (Instrument Flight Operations)	20	5.0	\$442,618	\$0	\$424,075	\$22,131	\$88,418	\$21,204	\$84,713
181	CUA60315	Advanced Diploma of Graphic Design	19	9.6	\$102,475	\$0	\$102,475	\$5,393	\$10,682	\$5,393	\$10,682
182	CPP50611	Diploma of Security and Risk Management	19	8.5	\$100,719	\$0	\$100,719	\$5,301	\$11,902	\$5,301	\$11,902
183	10434NAT	Diploma of Christian Ministry and Theology	19	7.9	\$31,970	\$0	\$31,970	\$1,683	\$4,030	\$1,683	\$4,030
184	CUS60209	Advanced Diploma of Sound Production	19	6.5	\$63,167	\$0	\$63,167	\$3,325	\$9,778	\$3,325	\$9,778
185	UEE50511	Diploma of Electronics and Communications Engineering	19	6.5	\$46,834	\$0	\$46,834	\$2,465	\$7,253	\$2,465	\$7,253
186	10067NAT	Diploma of Fitness Coaching	19	6.3	\$118,750	\$0	\$118,750	\$6,250	\$18,760	\$6,250	\$18,760
187	10010NAT	Advanced Diploma of Performance	18	15.0	\$163,875	\$2,819	\$161,056	\$9,104	\$10,925	\$8,948	\$10,737
188	10435NAT	Advanced Diploma of Christian Ministry and Theology	18	14.7	\$56,920	\$0	\$56,920	\$3,162	\$3,868	\$3,162	\$3,868
189	10073NAT	Advanced Diploma of Acting	17	17.0	\$145,883	\$0	\$145,883	\$8,581	\$8,581	\$8,581	\$8,581
190	10482NAT	Diploma of Journalism	17	8.1	\$160,089	\$0	\$160,089	\$9,417	\$19,856	\$9,417	\$19,856
191	CPC50308	Diploma of Building and Construction (Management)	17	4.5	\$22,389	\$0	\$22,389	\$1,317	\$4,943	\$1,317	\$4,943
192	UEE50111	Diploma of Computer Systems Engineering	17	2.3	\$27,904	\$0	\$27,903	\$1,641	\$12,245	\$1,641	\$12,245
193	AHC50510	Diploma of Arboriculture	16	15.5	\$31,350	\$0	\$31,350	\$1,959	\$2,020	\$1,959	\$2,020
194	ICT50515	Diploma of Database Design and Development	16	6.9	\$91,095	\$0	\$91,095	\$5,693	\$13,228	\$5,693	\$13,228
195	BSB60515	Advanced Diploma of Marketing	16	3.9	\$35,021	\$0	\$35,021	\$2,189	\$9,085	\$2,189	\$9,085
196	22260VIC	Diploma of Applied Horticultural Science	15	11.9	\$48,830	\$0	\$48,830	\$3,255	\$4,113	\$3,255	\$4,113
197	ICT60215	Advanced Diploma of Network Security	15	3.9	\$22,958	\$0	\$22,958	\$1,531	\$5,869	\$1,531	\$5,869
198	UEE62211	Advanced Diploma of Electrical - Engineering	15	2.7	\$14,844	\$90	\$14,754	\$990	\$5,474	\$984	\$5,440
199	HLT65015	Advanced Diploma of Dental Prosthetics	14	13.5	\$312,902	\$2,463	\$310,439	\$22,350	\$23,243	\$22,174	\$23,060
200	CHC51308	Diploma of Education Support	14	5.8	\$38,500	\$0	\$38,500	\$2,750	\$6,696	\$2,750	\$6,696
201	CPP50112	Diploma of Surveying	14	5.0	\$28,616	\$0	\$28,616	\$2,044	\$5,699	\$2,044	\$5,699
202	CHC81115	Graduate Diploma of Family Dispute Resolution	14	4.9	\$95,550	\$0	\$95,550	\$6,825	\$19,500	\$6,825	\$19,500
203	22229VIC	Diploma of Engineering Technology	14	4.8	\$27,205	\$0	\$27,205	\$1,943	\$5,705	\$1,943	\$5,705
204	AHC51410	Diploma of Agribusiness Management	14	4.5	\$28,276	\$0	\$28,276	\$2,020	\$6,340	\$2,020	\$6,340
205	52738WA	Advanced Diploma of Aeronautics - Airline Transport Pilot	14	4.4	\$363,373	\$49,403	\$313,969	\$25,955	\$82,439	\$22,426	\$71,230

Rank	Course Code	Course name	Enrolments	EFTSL	Tuition fees	Paid upfront	Loans paid	Tuition fees per enrolment	Tuition fees per EFTSL	Loans per enrolment	Loans per EFTSL
206	AHC51812	Diploma of Organic Farming	13	5.1	\$32,189	\$0	\$32,189	\$2,476	\$6,312	\$2,476	\$6,312
207	CUV60211	Advanced Diploma of Visual Arts	13	3.1	\$30,778	\$0	\$30,778	\$2,368	\$9,993	\$2,368	\$9,993
208	10177NAT	Diploma of Clinical Hypnotherapy	12	8.0	\$96,000	\$0	\$96,000	\$8,000	\$12,001	\$8,000	\$12,001
209	SIT60216	Advanced Diploma of Event Management	12	6.5	\$26,755	\$0	\$26,755	\$2,230	\$4,098	\$2,230	\$4,098
210	HLT51015	Diploma of Paramedical Science	12	4.7	\$43,518	\$0	\$43,518	\$3,626	\$9,316	\$3,626	\$9,316
211	BSB60915	Advanced Diploma of Management (Human Resources)	12	3.1	\$14,357	\$0	\$14,357	\$1,196	\$4,567	\$1,196	\$4,567
212	52762WA	Diploma of Fashion Products and Markets	11	10.7	\$68,241	\$0	\$68,241	\$6,204	\$6,365	\$6,204	\$6,365
213	10572NAT	Graduate Diploma of Dramatherapy	11	9.0	\$147,600	\$0	\$147,600	\$13,418	\$16,364	\$13,418	\$16,364
214	CHC62015	Advanced Diploma of Community Sector Management	11	5.7	\$31,113	\$3,220	\$27,893	\$2,828	\$5,490	\$2,536	\$4,922
215	22245VIC	Graduate Diploma of Animal Biomechanical Medicine	11	5.1	\$34,794	\$0	\$34,794	\$3,163	\$6,874	\$3,163	\$6,874
216	TAE50111	Diploma of Vocational Education and Training	11	4.8	\$19,902	\$0	\$19,902	\$1,809	\$4,144	\$1,809	\$4,144
217	SIT50412	Diploma of Holiday Parks and Resorts	11	4.8	\$89,275	\$0	\$89,275	\$8,116	\$18,598	\$8,116	\$18,598
218	FDF50311	Diploma of Food Science and Technology	10	9.7	\$37,617	\$0	\$37,617	\$3,762	\$3,879	\$3,762	\$3,879
219	10220NAT	Diploma of Industrial Design	10	7.5	\$26,610	\$0	\$26,610	\$2,661	\$3,548	\$2,661	\$3,548
220	MSS50216	Diploma of Environmental Monitoring and Technology	10	6.2	\$32,680	\$0	\$32,680	\$3,268	\$5,301	\$3,268	\$5,301
221	10008NAT	Advanced Diploma of Share Trading and Investment	10	4.6	\$62,043	\$0	\$62,043	\$6,204	\$13,429	\$6,204	\$13,429
222	MEM50311	Diploma of Jewellery and Object Design	10	3.4	\$30,012	\$0	\$30,012	\$3,001	\$8,940	\$3,001	\$8,940
223	ICT60415	Advanced Diploma of Information Technology Project Management	10	2.2	\$18,697	\$0	\$18,697	\$1,870	\$8,499	\$1,870	\$8,499
224	CPP60312	Advanced Diploma of Surveying	9	4.5	\$19,736	\$0	\$19,736	\$2,193	\$4,414	\$2,193	\$4,414
225	SIS50115	Diploma of Sport and Recreation Management	9	4.0	\$42,842	\$0	\$42,842	\$4,760	\$10,819	\$4,760	\$10,819
226	10263NAT	Diploma of Applied Geosciences	9	3.6	\$43,083	\$0	\$43,083	\$4,787	\$12,061	\$4,787	\$12,061
227	LMT60507	Advanced Diploma of Fashion and Textiles Merchandising	9	2.9	\$52,871	\$0	\$52,871	\$5,875	\$18,026	\$5,875	\$18,026
228	CUA50213	Diploma of Musical Theatre	8	6.4	\$96,000	\$0	\$96,000	\$12,000	\$15,000	\$12,000	\$15,000
229	CHC51115	Diploma of Financial Counselling	8	3.6	\$16,179	\$319	\$15,860	\$2,022	\$4,498	\$1,982	\$4,410
230	CHC50412	Diploma of Community Services (Alcohol, other drugs and mental health)	8	3.1	\$23,161	\$54	\$23,107	\$2,895	\$7,458	\$2,888	\$7,440
231	HLT60412	Advanced Diploma of Dental Prosthetics	8	2.4	\$99,750	\$0	\$99,750	\$12,469	\$42,000	\$12,469	\$42,000
232	LMT50607	Diploma of Fashion and Textiles Merchandising	8	2.3	\$27,934	\$1,556	\$26,378	\$3,492	\$12,156	\$3,297	\$11,479
233	10221NAT	Advanced Diploma of Industrial Design	7	7.3	\$23,164	\$0	\$23,164	\$3,309	\$3,191	\$3,309	\$3,191
234	SIS50215	Diploma of Fitness	7	3.4	\$29,570	\$0	\$29,570	\$4,224	\$8,774	\$4,224	\$8,774
235	CUS60109	Advanced Diploma of Music	7	2.8	\$36,551	\$0	\$36,551	\$5,222	\$13,195	\$5,222	\$13,195
236	HLT52515	Diploma of Reflexology	7	2.3	\$23,834	\$0	\$23,834	\$3,405	\$10,351	\$3,405	\$10,351
237	10259NAT	Diploma of Arts (Acting)	7	2.0	\$24,140	\$0	\$24,140	\$3,449	\$12,143	\$3,449	\$12,143
238	CPC50612	Diploma of Hydraulic Services Design	7	1.7	\$17,987	\$0	\$17,987	\$2,570	\$10,464	\$2,570	\$10,464
239	AVI50510	Diploma of Aviation (Flight Instructor)	7	1.1	\$61,702	\$10,183	\$51,519	\$8,815	\$57,079	\$7,360	\$47,658
240	HLT60712	Advanced Diploma of Ayurveda	7	0.6	\$5,608	\$0	\$5,608	\$801	\$9,732	\$801	\$9,732
241	10326NAT	Diploma of Education (Aboriginal and Torres Strait Islander)	6	6.0	\$16,095	\$1,021	\$15,074	\$2,683	\$2,687	\$2,512	\$2,517
242	CPP50116	Diploma of Surveying	6	4.5	\$19,144	\$0	\$19,144	\$3,191	\$4,289	\$3,191	\$4,289
243	MSS50211	Diploma of Environmental Monitoring and Technology	6	3.4	\$11,790	\$0	\$11,790	\$1,965	\$3,493	\$1,965	\$3,493
244	10459NAT	Diploma of Golf Management	6	3.0	\$71,850	\$0	\$71,850	\$11,975	\$23,950	\$11,975	\$23,950
245	MEM50105	Diploma of Engineering - Advanced Trade	6	2.8	\$22,904	\$0	\$22,904	\$3,817	\$8,218	\$3,817	\$8,218
246	CPC60212	Advanced Diploma of Building and Construction (Management)	6	2.2	\$12,479	\$0	\$12,479	\$2,080	\$5,662	\$2,080	\$5,662
247	CUF50507	Diploma of Costume for Performance	6	1.8	\$26,468	\$0	\$26,468	\$4,411	\$14,338	\$4,411	\$14,338

Rank	Course Code	Course name	Enrolments	EFTSL	Tuition fees	Paid upfront	Loans paid	Tuition fees per enrolment	Tuition fees per EFTSL	Loans per enrolment	Loans per EFTSL
248	BSB50115	Diploma of Advertising	6	1.7	\$18,577	\$0	\$18,577	\$3,096	\$10,782	\$3,096	\$10,782
249	10352NAT	Diploma of Visual Communication (Design Communication / Photo Communication)	6	1.7	\$28,302	\$8,301	\$20,001	\$4,717	\$17,153	\$3,334	\$12,122
250	10436NAT	Graduate Certificate in Christian Ministry and Theology	6	1.1	\$7,150	\$0	\$7,150	\$1,192	\$6,603	\$1,192	\$6,603
251	10048NAT	Diploma of Payroll Management	6	1.0	\$11,016	\$0	\$11,016	\$1,836	\$11,535	\$1,836	\$11,535
252	CUA60113	Advanced Diploma of Dance (Elite Performance)	5	3.8	\$30,788	\$0	\$30,788	\$6,158	\$8,119	\$6,158	\$8,119
253	CPP80213	Graduate Diploma of Building Design	5	2.5	\$45,000	\$0	\$45,000	\$9,000	\$18,000	\$9,000	\$18,000
254	TAE50211	Diploma of Training Design and Development	5	2.5	\$15,448	\$0	\$15,448	\$3,090	\$6,181	\$3,090	\$6,181
255	RII50513	Diploma of Civil Construction Design	5	2.4	\$15,886	\$0	\$15,886	\$3,177	\$6,543	\$3,177	\$6,543
256	AHC51513	Diploma of Viticulture	5	2.4	\$16,244	\$0	\$16,244	\$3,249	\$6,699	\$3,249	\$6,699
257	BSB50207	Diploma of Business	5	2.3	\$17,075	\$0	\$17,075	\$3,415	\$7,424	\$3,415	\$7,424
258	10045NAT	Graduate Certificate in Architectural Digital Illustration	5	2.3	\$13,500	\$0	\$13,500	\$2,700	\$6,000	\$2,700	\$6,000
259	CUS50309	Diploma of Music Business	5	2.1	\$27,750	\$0	\$27,750	\$5,550	\$13,504	\$5,550	\$13,504
260	UEE50411	Diploma of Electrical Engineering	5	1.9	\$13,687	\$0	\$13,687	\$2,737	\$7,382	\$2,737	\$7,382
261	39296QLD	Graduate Certificate in TESOL	5	1.1	\$11,250	\$0	\$11,250	\$2,250	\$10,465	\$2,250	\$10,465
262	10108NAT	Graduate Certificate in Organisational Coaching	5	0.9	\$31,500	\$269	\$31,231	\$6,300	\$35,714	\$6,246	\$35,409
263	10128NAT	Graduate Certificate in Logistics and Supply Chain Management	5	0.6	\$14,000	\$0	\$14,000	\$2,800	\$21,978	\$2,800	\$21,978
264	CPP50511	Diploma of Property Services (Asset and Facility Management)	<5	3.9	\$7,770	\$17	\$7,753	n.p.	\$1,989	n.p.	\$1,984
265	10512NAT	Graduate Certificate in Wound Management	<5	3.2	\$26,211	\$0	\$26,211	n.p.	\$8,268	n.p.	\$8,268
266	52357	Advanced Diploma of Jewellery Design	<5	2.7	\$13,804	\$0	\$13,804	n.p.	\$5,108	n.p.	\$5,108
267	52724WA	Advanced Diploma of Civil and Structural Engineering	<5	2.0	\$10,269	\$0	\$10,269	n.p.	\$5,043	n.p.	\$5,043
268	CUA60213	Advanced Diploma of Live Production and Management Services	<5	2.0	\$31,000	\$0	\$31,000	n.p.	\$15,500	n.p.	\$15,500
269	52725WA	Diploma of Civil and Structural Engineering	<5	1.8	\$8,502	\$0	\$8,502	n.p.	\$4,791	n.p.	\$4,791
270	CUV60411	Advanced Diploma of Graphic Design	<5	1.7	\$10,335	\$0	\$10,335	n.p.	\$5,993	n.p.	\$5,993
271	10129NAT	Graduate Certificate in Teaching English as an Additional Language	<5	1.6	\$11,000	\$0	\$11,000	n.p.	\$6,820	n.p.	\$6,820
272	22233VIC	Diploma of Leadership Coaching and Mentoring	<5	1.6	\$46,116	\$0	\$46,116	n.p.	\$28,823	n.p.	\$28,823
273	TLI50813	Diploma of Customs Broking	<5	1.6	\$6,955	\$0	\$6,955	n.p.	\$4,347	n.p.	\$4,347
274	TAE50216	Diploma of Training Design and Development	<5	1.5	\$11,636	\$0	\$11,636	n.p.	\$7,602	n.p.	\$7,602
275	RII50515	Diploma of Civil Construction Design	<5	1.5	\$7,912	\$0	\$7,912	n.p.	\$5,283	n.p.	\$5,283
276	PSP50916	Diploma of Interpreting (LOTE-English)	<5	1.1	\$4,900	\$0	\$4,900	n.p.	\$4,558	n.p.	\$4,558
277	MEA50215	Diploma of Aeroskills (Mechanical)	<5	1.0	\$16,799	\$0	\$16,799	n.p.	\$16,231	n.p.	\$16,231
278	CUA50513	Diploma of Live Production Design	<5	0.7	\$9,262	\$0	\$9,262	n.p.	\$13,824	n.p.	\$13,824
279	AHC60110	Advanced Diploma of Agriculture	<5	1.7	\$9,499	\$0	\$9,499	n.p.	\$5,491	n.p.	\$5,491
280	30870QLD	Diploma of Permaculture	<5	1.5	\$11,700	\$0	\$11,700	n.p.	\$7,800	n.p.	\$7,800
281	PSP52412	Diploma of Interpreting	<5	1.5	\$4,525	\$0	\$4,525	n.p.	\$3,017	n.p.	\$3,017
282	ICP50115	Diploma of Printing and Graphic Arts	<5	1.5	\$29,150	\$0	\$29,150	n.p.	\$19,437	n.p.	\$19,437
283	SFI50111	Diploma of Aquaculture	<5	1.1	\$9,059	\$0	\$9,059	n.p.	\$8,206	n.p.	\$8,206
284	MAR60315	Advanced Diploma of Maritime Operations (Master Unlimited)	<5	1.1	\$8,301	\$0	\$8,301	n.p.	\$7,585	n.p.	\$7,585
285	BSB50407	Diploma of Business Administration	<5	1.0	\$6,280	\$0	\$6,280	n.p.	\$6,068	n.p.	\$6,068
286	22230VIC	Graduate Certificate in Management	<5	1.0	\$4,375	\$0	\$4,375	n.p.	\$4,250	n.p.	\$4,250
287	31004QLD	Advanced Diploma of Management in Christian Ministry	<5	0.9	\$11,133	\$0	\$11,133	n.p.	\$12,234	n.p.	\$12,234
288	22273VIC	Diploma of Agronomy	<5	0.9	\$4,515	\$0	\$4,515	n.p.	\$4,996	n.p.	\$4,996
289	10437NAT	Graduate Diploma of Christian Ministry and Theology	<5	0.7	\$4,950	\$0	\$4,950	n.p.	\$6,603	n.p.	\$6,603

Rank	Course Code	Course name	Enrolments	EFTSL	Tuition fees	Paid upfront	Loans paid	Tuition fees per enrolment	Tuition fees per EFTSL	Loans per enrolment	Loans per EFTSL
290	ICT50815	Diploma of Systems Analysis and Design	<5	0.7	\$6,924	\$0	\$6,924	n.p.	\$9,485	n.p.	\$9,485
291	HLT50113	Diploma of Aboriginal and/or Torres Strait Islander Primary Health Care	<5	0.7	\$9,669	\$0	\$9,669	n.p.	\$14,762	n.p.	\$14,762
292	TAE80113	Graduate Diploma of Adult Language, Literacy and Numeracy Practice	<5	0.5	\$5,620	\$0	\$5,620	n.p.	\$10,604	n.p.	\$10,604
293	HLT61107	Advanced Diploma of Nursing (Enrolled/Division 2 nursing)	<5	0.1	\$3,000	\$0	\$3,000	n.p.	\$26,316	n.p.	\$26,316
294	AHC51010	Diploma of Sports Turf Management	<5	2.0	\$5,456	\$0	\$5,456	n.p.	\$2,759	n.p.	\$2,759
295	AHC51016	Diploma of Sports Turf Management	<5	1.5	\$5,456	\$0	\$5,456	n.p.	\$3,571	n.p.	\$3,571
296	AHC50710	Diploma of Parks and Gardens Management	<5	1.5	\$12,433	\$0	\$12,433	n.p.	\$8,289	n.p.	\$8,289
297	HLT52012	Diploma of Practice Management	<5	1.3	\$5,833	\$0	\$5,833	n.p.	\$4,376	n.p.	\$4,376
298	SIT60112	Advanced Diploma of Travel and Tourism	<5	1.2	\$15,499	\$0	\$15,499	n.p.	\$13,247	n.p.	\$13,247
299	MAR50415	Diploma of Maritime Operations (Master up to 500 GT)	<5	1.0	\$12,547	\$0	\$12,547	n.p.	\$12,241	n.p.	\$12,241
300	MSF50313	Diploma of Furniture Design and Technology	<5	1.0	\$4,000	\$0	\$4,000	n.p.	\$4,000	n.p.	\$4,000
301	CUA51215	Diploma of Ceramics	<5	1.0	\$10,824	\$0	\$10,824	n.p.	\$10,824	n.p.	\$10,824
302	10284NAT	Diploma of Crime and Justice Studies	<5	0.9	\$9,641	\$0	\$9,641	n.p.	\$10,202	n.p.	\$10,202
303	CPP50216	Diploma of Spatial Information Services	<5	0.9	\$5,750	\$0	\$5,750	n.p.	\$6,534	n.p.	\$6,534
304	UEE51111	Diploma of Engineering Technology - Refrigeration and Air-conditioning	<5	0.8	\$3,250	\$161	\$3,090	n.p.	\$4,333	n.p.	\$4,119
305	CPP50212	Diploma of Spatial Information Services	<5	0.7	\$5,140	\$0	\$5,140	n.p.	\$7,788	n.p.	\$7,788
306	CUA50113	Diploma of Dance (Elite Performance)	<5	0.6	\$3,193	\$0	\$3,193	n.p.	\$4,920	n.p.	\$4,920
307	CUA60515	Advanced Diploma of Music Industry	<5	0.6	\$2,552	\$0	\$2,552	n.p.	\$3,988	n.p.	\$3,988
308	ICT60115	Advanced Diploma of Information Technology	<5	0.5	\$1,776	\$0	\$1,776	n.p.	\$3,271	n.p.	\$3,271
309	AHC60310	Advanced Diploma of Agribusiness Management	<5	0.5	\$5,545	\$0	\$5,545	n.p.	\$11,090	n.p.	\$11,090
310	BSB50815	Diploma of International Business	<5	0.5	\$1,986	\$0	\$1,986	n.p.	\$4,128	n.p.	\$4,128
311	CHC50108	Diploma of Disability	<5	0.5	\$3,659	\$0	\$3,659	n.p.	\$7,840	n.p.	\$7,840
312	CHC80208	Graduate Diploma of Relationship Counselling	<5	0.4	\$4,298	\$0	\$4,298	n.p.	\$11,101	n.p.	\$11,101
313	SFI50411	Diploma of Fisheries Compliance	<5	0.4	\$2,089	\$0	\$2,089	n.p.	\$5,493	n.p.	\$5,493
314	ICT60315	Advanced Diploma of Information Technology Business Analysis	<5	0.3	\$3,825	\$0	\$3,825	n.p.	\$12,240	n.p.	\$12,240
315	10112NAT	Graduate Certificate in Applied Business	<5	0.2	\$7,000	\$300	\$6,700	n.p.	\$29,762	n.p.	\$28,486
316	UEE51211	Diploma of Air-conditioning and Refrigeration Engineering	<5	0.2	\$2,430	\$0	\$2,430	n.p.	\$12,857	n.p.	\$12,857
317	AHC50116	Diploma of Agriculture	<5	1.1	\$3,896	\$0	\$3,896	n.p.	\$3,610	n.p.	\$3,610
318	10431NAT	Diploma of Language Teaching - TESOL	<5	1.1	\$2,360	\$0	\$2,360	n.p.	\$2,226	n.p.	\$2,226
319	SIT60116	Advanced Diploma of Travel and Tourism Management	<5	1.0	\$2,296	\$0	\$2,296	n.p.	\$2,296	n.p.	\$2,296
320	10060NAT	Advanced Diploma of International Hotel and Resort Management	<5	0.9	\$9,963	\$0	\$9,963	n.p.	\$11,194	n.p.	\$11,194
321	HLT52615	Diploma of Ayurvedic Lifestyle Consultation	<5	0.7	\$4,868	\$0	\$4,868	n.p.	\$6,810	n.p.	\$6,810
322	22284VIC	Diploma of Business (Public Relations)	<5	0.7	\$5,613	\$613	\$5,000	n.p.	\$8,249	n.p.	\$7,348
323	RII50413	Diploma of Civil Construction Management	<5	0.7	\$11,200	\$0	\$11,200	n.p.	\$16,802	n.p.	\$16,802
324	RII50415	Diploma of Civil Construction Management	<5	0.7	\$6,648	\$0	\$6,648	n.p.	\$10,023	n.p.	\$10,023
326	TAE80210	Graduate Diploma of Management (Learning)	<5	0.7	\$6,260	\$0	\$6,260	n.p.	\$9,485	n.p.	\$9,485
325	AUR50112	Diploma of Automotive Management	<5	0.7	\$6,882	\$0	\$6,882	n.p.	\$10,427	n.p.	\$10,427
327	52759WA	Advanced Diploma of Engineering (Oil and Gas)	<5	0.5	\$2,056	\$0	\$2,056	n.p.	\$3,918	n.p.	\$3,918
328	ICA50711	Diploma of Software Development	<5	0.5	\$1,943	\$0	\$1,943	n.p.	\$3,854	n.p.	\$3,854
329	ICA50411	Diploma of Information Technology Networking	<5	0.5	\$3,286	\$0	\$3,286	n.p.	\$6,520	n.p.	\$6,520
330	SIR50112	Diploma of Retail Management	<5	0.5	\$4,297	\$0	\$4,297	n.p.	\$8,594	n.p.	\$8,594
331	UEE61711	Advanced Diploma of Engineering Technology - Electronics	<5	0.5	\$5,938	\$0	\$5,938	n.p.	\$11,876	n.p.	\$11,876



Rank	Course Code	Course name	Enrolments	EFTSL	Tuition fees	Paid upfront	Loans paid	Tuition fees per enrolment	Tuition fees per EFTSL	Loans per enrolment	Loans per EFTSL
332	PSP60916	Advanced Diploma of Interpreting (LOTE-English)	<5	0.5	\$2,015	\$0	\$2,015	n.p.	\$4,369	n.p.	\$4,369
333	52694WA	Diploma of Aviation Management	<5	0.4	\$3,066	\$0	\$3,066	n.p.	\$7,158	n.p.	\$7,158
334	AHC50810	Diploma of Production Nursery Management	<5	0.4	\$1,912	\$0	\$1,912	n.p.	\$4,780	n.p.	\$4,780
335	NWP50107	Diploma of Water Operations	<5	0.4	\$2,200	\$0	\$2,200	n.p.	\$5,759	n.p.	\$5,759
336	BSB51107	Diploma of Management	<5	0.4	\$2,025	\$0	\$2,025	n.p.	\$5,625	n.p.	\$5,625
337	10373NAT	Graduate Diploma of Applied Pharmacy Practice	<5	0.3	\$875	\$0	\$875	n.p.	\$2,612	n.p.	\$2,612
338	MAR60115	Advanced Diploma of Maritime Operations (Marine Engineering Class 2)	<5	0.3	\$1,497	\$0	\$1,497	n.p.	\$5,691	n.p.	\$5,691
339	FNS51515	Diploma of Credit Management	<5	0.3	\$1,650	\$0	\$1,650	n.p.	\$6,600	n.p.	\$6,600
340	22308VIC	Diploma of Horse Breeding (Stud Management)	<5	0.2	\$1,218	\$0	\$1,218	n.p.	\$5,152	n.p.	\$5,152
341	FNS50210	Diploma of Accounting	<5	0.2	\$820	\$0	\$820	n.p.	\$3,694	n.p.	\$3,694
342	22267VIC	Diploma of Electrical Project Management	<5	0.2	\$857	\$0	\$857	n.p.	\$4,001	n.p.	\$4,001
343	CUA60415	Advanced Diploma of Creative Product Development	<5	0.2	\$2,200	\$1	\$2,199	n.p.	\$12,571	n.p.	\$12,566
344	10052NAT	Advanced Diploma of Health Science (Soft Tissue Therapy)	<5	0.1	\$280	\$0	\$280	n.p.	\$2,000	n.p.	\$2,000
345	10180NAT	Graduate Diploma of Virtualisation Technologies	<5	0.1	\$1,950	\$0	\$1,950	n.p.	\$14,629	n.p.	\$14,629
346	AHC51416	Diploma of Agribusiness Management	<5	0.1	\$1,200	\$0	\$1,200	n.p.	\$13,483	n.p.	\$13,483
347	CUV60311	Advanced Diploma of Creative Product Development	<5	0.1	\$585	\$0	\$585	n.p.	\$6,693	n.p.	\$6,693
348	10257NAT	Diploma of Food and Wine Management	<5	0.1	\$917	\$0	\$917	n.p.	\$10,657	n.p.	\$10,657
349	FNS50915	Diploma of Banking Services Management	<5	0.1	\$252	\$0	\$252	n.p.	\$3,036	n.p.	\$3,036
350	BSB61215	Advanced Diploma of Program Management	<5	0.1	\$1,663	\$0	\$1,663	n.p.	\$20,285	n.p.	\$20,285
351	PSP50116	Diploma of Government	<5	0.1	\$1,263	\$0	\$1,263	n.p.	\$15,407	n.p.	\$15,407
352	52697WA	Diploma of Marine Studies	<5	0.0	\$277	\$0	\$277	n.p.	\$6,016	n.p.	\$6,016
353	PSP61112	Advanced Diploma of Interpreting	<5	0.0	\$288	\$0	\$288	n.p.	\$7,491	n.p.	\$7,491
354	CHC50612	Diploma of Community Services Work	<5	0.0	\$354	\$0	\$354	n.p.	\$9,973	n.p.	\$9,973
		<b>Total:</b>	<b>50,210</b>	<b>25,972.2</b>	<b>\$310,788,308</b>	<b>\$3,021,385</b>	<b>\$307,630,755</b>	<b>\$6,190</b>	<b>\$11,966</b>	<b>\$6,127</b>	<b>\$11,845</b>

**Table 5: VFH courses ordered by VFH loans paid in 2017**

Rank	Course Code	Course name	Enrolments	EFTSL	Tuition fees	Paid upfront	Loans paid	Tuition fees per enrolment	Tuition fees per EFTSL	Loans per enrolment	Loans per EFTSL
1	HLT51612	Diploma of Nursing (Enrolled-Division 2 nursing)	7,456	4,061.1	\$40,713,347	\$1,364,164	\$39,349,183	\$5,460	\$10,025	\$5,278	\$9,689
2	CHC50113	Diploma of Early Childhood Education and Care	4,362	2,693.7	\$19,862,889	\$50,964	\$19,811,925	\$4,554	\$7,374	\$4,542	\$7,355
3	SHB50115	Diploma of Beauty Therapy	2,367	1,184.5	\$19,543,177	\$61,702	\$19,475,209	\$8,257	\$16,499	\$8,228	\$16,441
4	AVI50215	Diploma of Aviation (Commercial Pilot Licence - Aeroplane)	467	242.1	\$18,668,580	\$95,217	\$18,534,985	\$39,976	\$77,113	\$39,689	\$76,561
5	CHC52015	Diploma of Community Services	3,254	1,768.1	\$15,729,478	\$354,750	\$15,377,728	\$4,834	\$8,896	\$4,726	\$8,697
6	BSB50215	Diploma of Business	2,061	765.4	\$12,317,302	\$13,481	\$12,303,821	\$5,976	\$16,093	\$5,970	\$16,075
7	10343NAT	Advanced Diploma of Professional Game Development	646	566.0	\$10,785,253	\$14,681	\$10,770,572	\$16,695	\$19,054	\$16,673	\$19,028
8	CHC51015	Diploma of Counselling	1,496	813.2	\$8,998,969	\$30,626	\$8,967,160	\$6,015	\$11,067	\$5,994	\$11,028
9	CUA51015	Diploma of Screen and Media	884	456.4	\$8,659,421	\$8,479	\$8,650,941	\$9,796	\$18,975	\$9,786	\$18,956
10	BSB51915	Diploma of Leadership and Management	1,377	545.7	\$7,784,872	\$57,019	\$7,726,424	\$5,654	\$14,267	\$5,611	\$14,160
11	HLT60512	Advanced Diploma of Naturopathy	753	509.0	\$5,914,939	\$2,825	\$5,911,532	\$7,855	\$11,622	\$7,851	\$11,615
12	SIB50110	Diploma of Beauty Therapy	684	384.9	\$5,653,148	\$24,990	\$5,628,158	\$8,265	\$14,687	\$8,228	\$14,622
13	BSB50415	Diploma of Business Administration	1,125	394.6	\$5,141,656	\$10,931	\$5,130,725	\$4,570	\$13,030	\$4,561	\$13,002
14	HLT61012	Advanced Diploma of Nutritional Medicine	671	356.5	\$4,933,353	\$1,420	\$4,931,933	\$7,352	\$13,837	\$7,350	\$13,833
15	CHC50413	Diploma of Youth Work	946	488.3	\$4,772,310	\$15	\$4,772,295	\$5,045	\$9,774	\$5,045	\$9,774
16	MSF50213	Diploma of Interior Design and Decoration	783	339.4	\$4,484,321	\$3,624	\$4,480,697	\$5,727	\$13,212	\$5,722	\$13,202
17	10136NAT	Diploma of Nutrition (Non-Clinical Advisor)	911	693.0	\$4,356,574	\$0	\$4,356,574	\$4,782	\$6,287	\$4,782	\$6,287
18	HLT54115	Diploma of Nursing	598	362.3	\$4,762,653	\$483,044	\$4,279,609	\$7,964	\$13,147	\$7,157	\$11,814
19	CUA60615	Advanced Diploma of Screen and Media	221	189.3	\$4,097,766	\$200	\$4,086,056	\$18,542	\$21,645	\$18,489	\$21,583
20	HLT52015	Diploma of Remedial Massage	704	322.7	\$3,604,712	\$38,599	\$3,566,113	\$5,120	\$11,170	\$5,066	\$11,051
21	SIS50612	Diploma of Sport Development	333	175.7	\$3,154,883	\$0	\$3,154,883	\$9,474	\$17,960	\$9,474	\$17,960
22	ICT50215	Diploma of Digital and Interactive Games	267	122.6	\$3,106,754	\$0	\$3,106,754	\$11,636	\$25,349	\$11,636	\$25,349
23	52699WA	Advanced Diploma of Transpersonal Art Therapy	301	220.0	\$3,074,750	\$17,929	\$3,056,821	\$10,215	\$13,978	\$10,156	\$13,896
24	CPP50911	Diploma of Building Design	604	310.7	\$2,887,977	\$1,475	\$2,886,501	\$4,781	\$9,296	\$4,779	\$9,291
25	FNS50215	Diploma of Accounting	724	249.5	\$2,650,983	\$8,992	\$2,641,991	\$3,662	\$10,625	\$3,649	\$10,589
26	22268VIC	Advanced Diploma of Building Design (Architectural)	558	402.5	\$2,408,901	\$1,993	\$2,406,908	\$4,317	\$5,985	\$4,313	\$5,980
27	CUA50715	Diploma of Graphic Design	424	145.3	\$2,211,710	\$198	\$2,211,512	\$5,216	\$15,220	\$5,216	\$15,219
28	CPC50210	Diploma of Building and Construction (Building)	470	400.4	\$2,073,079	\$858	\$2,072,221	\$4,411	\$5,177	\$4,409	\$5,175
29	CUV50311	Diploma of Graphic Design	468	103.6	\$2,059,402	\$694	\$2,058,601	\$4,400	\$19,885	\$4,399	\$19,878
30	10478NAT	Diploma of Healthcare Documentation	446	321.1	\$2,035,200	\$0	\$2,035,200	\$4,563	\$6,338	\$4,563	\$6,338
31	CHC51712	Diploma of Counselling	539	162.6	\$1,726,233	\$0	\$1,726,233	\$3,203	\$10,614	\$3,203	\$10,614
32	ICT50415	Diploma of Information Technology Networking	292	139.6	\$1,735,632	\$11,244	\$1,724,387	\$5,944	\$12,434	\$5,905	\$12,354
33	BSB51415	Diploma of Project Management	344	105.9	\$1,705,927	\$4,269	\$1,701,658	\$4,959	\$16,110	\$4,947	\$16,069
34	SIT50212	Diploma of Events	361	98.7	\$1,675,447	\$7,196	\$1,668,252	\$4,641	\$16,969	\$4,621	\$16,896
35	AVI50315	Diploma of Aviation (Commercial Pilot Licence - Helicopter)	29	13.0	\$1,637,223	\$20,368	\$1,616,854	\$56,456	\$125,747	\$55,754	\$124,182
36	BSB50615	Diploma of Human Resources Management	428	125.3	\$1,608,827	\$1,937	\$1,606,890	\$3,759	\$12,843	\$3,754	\$12,828
37	SIT60313	Advanced Diploma of Hospitality	137	80.0	\$1,491,661	\$24,786	\$1,466,875	\$10,888	\$18,649	\$10,707	\$18,340
38	HLT57715	Diploma of Practice Management	277	159.8	\$1,417,745	\$0	\$1,417,745	\$5,118	\$8,869	\$5,118	\$8,869
39	SIT50313	Diploma of Hospitality	276	105.1	\$1,382,319	\$6,706	\$1,373,027	\$5,008	\$13,156	\$4,975	\$13,067

Rank	Course Code	Course name	Enrolments	EFTSL	Tuition fees	Paid upfront	Loans paid	Tuition fees per enrolment	Tuition fees per EFTSL	Loans per enrolment	Loans per EFTSL
40	ICT50615	Diploma of Website Development	253	101.5	\$1,346,780	\$7,493	\$1,339,287	\$5,323	\$13,269	\$5,294	\$13,196
41	AVI50415	Diploma of Aviation (Instrument Rating)	57	22.4	\$1,358,686	\$7,335	\$1,293,177	\$23,837	\$60,734	\$22,687	\$57,806
42	CPP50307	Diploma of Property Services (Agency Management)	248	57.8	\$1,237,733	\$0	\$1,237,733	\$4,991	\$21,415	\$4,991	\$21,415
43	52709WA	Graduate Diploma of Cosmetic Nursing	161	67.4	\$1,232,030	\$1,300	\$1,230,730	\$7,652	\$18,293	\$7,644	\$18,274
44	CUA50915	Diploma of Photography and Photo Imaging	230	73.8	\$1,206,982	\$2,298	\$1,204,684	\$5,248	\$16,346	\$5,238	\$16,315
45	52698WA	Advanced Diploma of Transpersonal Counselling	113	83.4	\$1,165,215	\$1,000	\$1,164,215	\$10,312	\$13,969	\$10,303	\$13,957
46	CUF50407	Diploma of Specialist Make-up Services	185	69.9	\$1,123,550	\$0	\$1,123,550	\$6,073	\$16,066	\$6,073	\$16,066
47	CUF50107	Diploma of Screen and Media	153	55.6	\$1,108,801	\$0	\$1,108,801	\$7,247	\$19,957	\$7,247	\$19,957
48	ICT50115	Diploma of Information Technology	198	92.5	\$1,108,165	\$0	\$1,108,165	\$5,597	\$11,977	\$5,597	\$11,977
49	CHC50313	Diploma of Child, Youth and Family Intervention	226	137.3	\$1,120,884	\$81,096	\$1,039,788	\$4,960	\$8,166	\$4,601	\$7,576
50	CHC53315	Diploma of Mental Health	243	123.1	\$987,005	\$0	\$987,005	\$4,062	\$8,018	\$4,062	\$8,018
51	CUV50411	Diploma of Photo Imaging	258	55.5	\$985,818	\$1,476	\$984,342	\$3,821	\$17,773	\$3,815	\$17,747
52	HLT60112	Advanced Diploma of Western Herbal Medicine	139	86.9	\$973,837	\$0	\$973,409	\$7,006	\$11,202	\$7,003	\$11,197
53	HLT52415	Diploma of Kinesiology	104	89.4	\$973,323	\$11,194	\$962,129	\$9,359	\$10,892	\$9,251	\$10,767
54	CUS50209	Diploma of Sound Production	157	56.6	\$908,844	\$0	\$908,844	\$5,789	\$16,069	\$5,789	\$16,069
55	BSB80615	Graduate Diploma of Management (Learning)	69	42.9	\$879,040	\$200	\$878,840	\$12,740	\$20,500	\$12,737	\$20,495
56	LMT50307	Diploma of Applied Fashion Design and Technology	161	80.0	\$862,112	\$2,455	\$859,657	\$5,355	\$10,773	\$5,339	\$10,742
57	SIT50316	Diploma of Event Management	161	73.6	\$847,250	\$108	\$847,142	\$5,262	\$11,505	\$5,262	\$11,503
58	52707WA	Graduate Diploma of Dermal Therapies	129	48.7	\$802,652	\$0	\$802,652	\$6,222	\$16,473	\$6,222	\$16,473
59	10349NAT	Advanced Diploma of Stage and Screen Acting	52	44.0	\$788,000	\$0	\$788,000	\$15,154	\$17,909	\$15,154	\$17,909
60	10560NAT	Advanced Diploma of Performing Arts (Acting)	46	34.5	\$777,975	\$0	\$777,975	\$16,913	\$22,550	\$16,913	\$22,550
61	30972QLD	Advanced Diploma of Screen and Stage Acting	53	38.7	\$756,700	\$0	\$756,700	\$14,277	\$19,548	\$14,277	\$19,548
62	CHC53215	Diploma of Alcohol and Other Drugs	150	99.0	\$728,896	\$755	\$728,140	\$4,859	\$7,359	\$4,854	\$7,351
63	ICT50915	Diploma of Digital Media Technologies	116	42.5	\$720,689	\$0	\$720,689	\$6,213	\$16,967	\$6,213	\$16,967
64	HLT55115	Diploma of Dental Technology	87	56.1	\$703,914	\$5,689	\$698,225	\$8,091	\$12,556	\$8,026	\$12,454
65	CPC60115	Advanced Diploma of Building Surveying	134	111.9	\$701,033	\$4,620	\$696,413	\$5,232	\$6,266	\$5,197	\$6,225
66	10566NAT	Diploma of Ministry and Theology (Stream)	124	50.6	\$671,975	\$0	\$671,975	\$5,419	\$13,268	\$5,419	\$13,268
67	10134NAT	Graduate Diploma of Counselling and Integrated Psychotherapy (Spiritual)	123	63.0	\$669,893	\$0	\$669,893	\$5,446	\$10,639	\$5,446	\$10,639
68	30968QLD	Diploma of Life Coaching	143	57.8	\$647,250	\$0	\$647,250	\$4,526	\$11,208	\$4,526	\$11,208
69	10260NAT	Advanced Diploma of Arts (Acting)	39	34.9	\$595,389	\$548	\$594,842	\$15,266	\$17,057	\$15,252	\$17,042
70	CHC50513	Diploma of Youth Justice	114	50.6	\$587,268	\$50	\$587,218	\$5,151	\$11,604	\$5,151	\$11,604
71	10487NAT	Advanced Diploma of Counselling and Family Therapy (Christian)	107	62.5	\$577,885	\$365	\$577,520	\$5,401	\$9,246	\$5,397	\$9,240
72	SIR50212	Diploma of Visual Merchandising	102	74.9	\$573,074	\$898	\$572,176	\$5,618	\$7,649	\$5,610	\$7,637
73	22228VIC	Advanced Diploma of Engineering Technology	155	100.9	\$565,973	\$184	\$565,789	\$3,651	\$5,608	\$3,650	\$5,606
74	CUA51115	Diploma of Visual Arts	153	53.5	\$560,466	\$2,877	\$557,589	\$3,663	\$10,475	\$3,644	\$10,421
75	22176VIC	Advanced Diploma of Photography	25	24.3	\$541,500	\$0	\$541,500	\$21,660	\$22,266	\$21,660	\$22,266
76	MSL50116	Diploma of Laboratory Technology	116	78.5	\$497,376	\$997	\$496,379	\$4,288	\$6,334	\$4,279	\$6,321
77	40633SA	Advanced Diploma of Oral Health (Dental Hygiene)	69	38.2	\$462,392	\$5,538	\$456,854	\$6,701	\$12,107	\$6,621	\$11,962
78	10065NAT	Diploma of Screen Acting	28	13.8	\$453,750	\$0	\$453,750	\$16,205	\$33,000	\$16,205	\$33,000
79	SIB70110	Graduate Certificate in Intense Pulsed Light and Laser Hair Reduction	118	50.2	\$452,575	\$3,057	\$449,518	\$3,835	\$9,017	\$3,809	\$8,956
80	BSB52115	Diploma of Library and Information Services	150	72.9	\$449,813	\$1,083	\$448,730	\$2,999	\$6,170	\$2,992	\$6,155
81	10167NAT	Advanced Diploma of Dermal Science and Therapies	34	18.8	\$448,875	\$1,800	\$447,075	\$13,202	\$23,940	\$13,149	\$23,844

Rank	Course Code	Course name	Enrolments	EFTSL	Tuition fees	Paid upfront	Loans paid	Tuition fees per enrolment	Tuition fees per EFTSL	Loans per enrolment	Loans per EFTSL
82	CUV50111	Diploma of Visual Arts	105	36.8	\$444,857	\$2,304	\$442,553	\$4,237	\$12,093	\$4,215	\$12,030
83	CUF60107	Advanced Diploma of Screen and Media	23	13.9	\$435,227	\$0	\$435,227	\$18,923	\$31,275	\$18,923	\$31,275
84	SIT50116	Diploma of Travel and Tourism Management	85	38.2	\$428,493	\$0	\$428,493	\$5,041	\$11,225	\$5,041	\$11,225
85	CUA50815	Diploma of Music Industry	77	32.6	\$428,260	\$331	\$427,929	\$5,562	\$13,129	\$5,558	\$13,119
86	AVI50408	Diploma of Aviation (Instrument Flight Operations)	20	5.0	\$442,618	\$0	\$424,075	\$22,131	\$88,418	\$21,204	\$84,713
87	ICT50715	Diploma of Software Development	79	42.9	\$422,749	\$2,057	\$420,693	\$5,351	\$9,851	\$5,325	\$9,803
88	BSB52215	Diploma of Legal Services	108	24.8	\$412,479	\$0	\$412,479	\$3,819	\$16,622	\$3,819	\$16,622
89	10510NAT	Advanced Diploma of Cosmetic Dermal Science	53	26.3	\$406,458	\$0	\$406,458	\$7,669	\$15,455	\$7,669	\$15,455
90	MSF60113	Advanced Diploma of Interior Design	63	37.9	\$394,764	\$40	\$394,724	\$6,266	\$10,407	\$6,265	\$10,406
91	CHC53415	Diploma of Leisure and Health	95	68.3	\$394,393	\$2,227	\$392,166	\$4,152	\$5,774	\$4,128	\$5,741
92	UEE62111	Advanced Diploma of Engineering Technology - Electrical	79	63.1	\$388,450	\$361	\$388,089	\$4,917	\$6,151	\$4,913	\$6,146
93	BSB51215	Diploma of Marketing	102	21.2	\$383,406	\$0	\$383,406	\$3,759	\$18,080	\$3,759	\$18,080
94	MST50116	Diploma of Applied Fashion Design and Merchandising	54	23.3	\$378,347	\$0	\$378,347	\$7,006	\$16,269	\$7,006	\$16,269
95	22276VIC	Advanced Diploma of Legal Practice	109	77.5	\$357,980	\$116	\$357,864	\$3,284	\$4,621	\$3,283	\$4,620
96	10539NAT	Diploma of Leadership in Expressive Arts and Group Work	29	42.4	\$351,875	\$1,250	\$350,625	\$12,134	\$8,304	\$12,091	\$8,275
97	ICT50315	Diploma of Information Technology Systems Administration	63	21.3	\$348,623	\$5,647	\$342,976	\$5,534	\$16,339	\$5,444	\$16,074
98	CUS50109	Diploma of Music	74	33.9	\$339,847	\$0	\$339,847	\$4,593	\$10,022	\$4,593	\$10,022
99	UEE60411	Advanced Diploma of Computer Systems Engineering	60	38.8	\$325,478	\$0	\$325,478	\$5,425	\$8,382	\$5,425	\$8,382
100	10358NAT	Advanced Diploma of Integrative Complementary Medicine	41	32.6	\$335,166	\$9,700	\$325,466	\$8,175	\$10,276	\$7,938	\$9,979
101	10130NAT	Advanced Diploma of Acting for Contemporary Screen Media	21	15.5	\$321,800	\$0	\$321,800	\$15,324	\$20,761	\$15,324	\$20,761
102	BSB61015	Advanced Diploma of Leadership and Management	75	22.9	\$316,954	\$2,075	\$314,879	\$4,226	\$13,868	\$4,198	\$13,777
103	52738WA	Advanced Diploma of Aeronautics - Airline Transport Pilot	14	4.4	\$363,373	\$49,403	\$313,969	\$25,955	\$82,439	\$22,426	\$71,230
104	10240NAT	Diploma of Clinical Hypnotherapy	47	24.8	\$312,500	\$0	\$312,500	\$6,649	\$12,626	\$6,649	\$12,626
105	HLT65015	Advanced Diploma of Dental Prosthetics	14	13.5	\$312,902	\$2,463	\$310,439	\$22,350	\$23,243	\$22,174	\$23,060
106	CHC81015	Graduate Diploma of Relationship Counselling	33	20.2	\$309,788	\$0	\$309,788	\$9,388	\$15,348	\$9,388	\$15,348
107	SIT50416	Diploma of Hospitality Management	48	24.8	\$306,124	\$2,275	\$303,849	\$6,378	\$12,338	\$6,330	\$12,246
108	BSB60215	Advanced Diploma of Business	51	26.2	\$303,186	\$0	\$303,186	\$5,945	\$11,591	\$5,945	\$11,591
109	22248VIC	Advanced Diploma of Myotherapy	72	29.9	\$299,957	\$0	\$299,957	\$4,166	\$10,031	\$4,166	\$10,031
110	HLT57915	Diploma of Anaesthetic Technology	61	37.0	\$296,920	\$300	\$296,620	\$4,868	\$8,016	\$4,863	\$8,008
111	10003NAT	Diploma of Mind Body Medicine	50	17.9	\$316,137	\$28,090	\$288,048	\$6,323	\$17,675	\$5,761	\$16,104
112	ahc50410	Diploma of Horticulture	90	47.3	\$287,058	\$0	\$287,058	\$3,190	\$6,070	\$3,190	\$6,070
113	MEM60112	Advanced Diploma of Engineering	75	72.0	\$286,177	\$887	\$285,308	\$3,816	\$3,975	\$3,804	\$3,963
114	BSB51315	Diploma of Work Health and Safety	65	30.1	\$279,458	\$120	\$279,339	\$4,299	\$9,278	\$4,298	\$9,274
115	AHC51110	Diploma of Conservation and Land Management	74	36.3	\$275,342	\$0	\$275,342	\$3,721	\$7,592	\$3,721	\$7,592
116	FNS60215	Advanced Diploma of Accounting	88	22.6	\$255,779	\$88	\$255,691	\$2,907	\$11,317	\$2,906	\$11,313
117	LMT60307	Advanced Diploma of Applied Fashion Design and Technology	63	16.5	\$250,377	\$0	\$250,377	\$3,974	\$15,205	\$3,974	\$15,205
118	CHC50213	Diploma of School Age Education and Care	70	41.6	\$243,545	\$0	\$243,545	\$3,479	\$5,853	\$3,479	\$5,853
119	HLT50512	Diploma of Dental Technology	38	14.9	\$241,996	\$0	\$241,996	\$6,368	\$16,262	\$6,368	\$16,262
120	10017NAT	Diploma of Leadership (Insert Stream)	84	33.9	\$234,445	\$330	\$234,115	\$2,791	\$6,915	\$2,787	\$6,905
121	10505NAT	Graduate Diploma of Arts Psychotherapy	27	14.1	\$229,400	\$800	\$228,600	\$8,496	\$16,260	\$8,467	\$16,204
122	HLT62615	Advanced Diploma of Ayurveda	31	14.3	\$227,677	\$1,434	\$226,243	\$7,344	\$15,890	\$7,298	\$15,790
123	10428NAT	Diploma of Styling (Fashion, Image and Media)	23	13.5	\$222,741	\$0	\$222,741	\$9,684	\$16,506	\$9,684	\$16,506

Rank	Course Code	Course name	Enrolments	EFTSL	Tuition fees	Paid upfront	Loans paid	Tuition fees per enrolment	Tuition fees per EFTSL	Loans per enrolment	Loans per EFTSL
124	AHC51116	Diploma of Conservation and Land Management	49	40.4	\$222,692	\$171	\$222,521	\$4,545	\$5,511	\$4,541	\$5,507
125	10486NAT	Diploma of Counselling (Christian)	67	29.6	\$220,090	\$279	\$219,811	\$3,285	\$7,429	\$3,281	\$7,420
126	AHC50610	Diploma of Landscape Design	66	36.3	\$219,736	\$671	\$219,064	\$3,329	\$6,056	\$3,319	\$6,037
127	CUF50207	Diploma of Interactive Digital Media	37	14.3	\$212,972	\$0	\$212,972	\$5,756	\$14,898	\$5,756	\$14,898
128	10234NAT	Diploma of Share Trading and Investment	36	17.2	\$204,533	\$0	\$204,533	\$5,681	\$11,919	\$5,681	\$11,919
129	SIT50112	Diploma of Travel and Tourism	57	14.2	\$203,703	\$231	\$203,472	\$3,574	\$14,335	\$3,570	\$14,319
130	22221VIC	Diploma of Product Design	37	33.0	\$200,385	\$74	\$200,311	\$5,416	\$6,074	\$5,414	\$6,072
131	10527NAT	Advanced Diploma of Rudolf Steiner Education	22	20.8	\$195,050	\$0	\$195,050	\$8,866	\$9,400	\$8,866	\$9,400
132	52763WA	Advanced Diploma of Functional Kinesiology	34	24.2	\$191,250	\$0	\$191,250	\$5,625	\$7,913	\$5,625	\$7,913
133	SIS50213	Diploma of Fitness	40	13.5	\$190,637	\$0	\$190,637	\$4,766	\$14,135	\$4,766	\$14,135
134	TLI50410	Diploma of Logistics	33	10.3	\$189,452	\$0	\$189,452	\$5,741	\$18,348	\$5,741	\$18,348
135	SHB50216	Diploma of Salon Management	48	9.0	\$188,585	\$0	\$188,585	\$3,929	\$20,852	\$3,929	\$20,852
136	22091VIC	Diploma of Professional Writing and Editing	51	26.4	\$177,046	\$100	\$176,946	\$3,471	\$6,709	\$3,470	\$6,705
137	MEM60211	Advanced Diploma of Jewellery and Object Design	33	20.2	\$173,220	\$402	\$172,818	\$5,249	\$8,584	\$5,237	\$8,564
138	FNS50615	Diploma of Financial Planning	41	21.8	\$170,527	\$453	\$170,073	\$4,159	\$7,813	\$4,148	\$7,793
139	10501NAT	Advanced Diploma of Clinical Hypnotherapy, Psychotherapy and Neuro-Linguistic Programming	39	19.8	\$170,000	\$0	\$170,000	\$4,359	\$8,586	\$4,359	\$8,586
140	SIT60316	Advanced Diploma of Hospitality Management	21	13.0	\$161,962	\$35	\$161,927	\$7,712	\$12,430	\$7,711	\$12,428
141	10010NAT	Advanced Diploma of Performance	18	15.0	\$163,875	\$2,819	\$161,056	\$9,104	\$10,925	\$8,948	\$10,737
142	HLT60612	Advanced Diploma of Homoeopathy	27	15.8	\$160,168	\$0	\$160,168	\$5,932	\$10,168	\$5,932	\$10,168
143	10482NAT	Diploma of Journalism	17	8.1	\$160,089	\$0	\$160,089	\$9,417	\$19,856	\$9,417	\$19,856
144	UEE60211	Advanced Diploma of Electronics and Communications Engineering	40	22.3	\$158,590	\$112	\$158,478	\$3,965	\$7,110	\$3,962	\$7,105
145	FNS50315	Diploma of Finance and Mortgage Broking Management	34	16.4	\$157,440	\$0	\$157,440	\$4,631	\$9,619	\$4,631	\$9,619
146	SIS50712	Diploma of Sport and Recreation Management	38	23.5	\$155,550	\$0	\$155,550	\$4,093	\$6,615	\$4,093	\$6,615
147	MEM50212	Diploma of Engineering - Technical	67	23.0	\$155,150	\$49	\$155,101	\$2,316	\$6,744	\$2,315	\$6,742
148	CUA50415	Diploma of Live Production and Technical Services	24	9.5	\$152,575	\$0	\$152,575	\$6,357	\$16,084	\$6,357	\$16,084
149	TLI50415	Diploma of Logistics	41	14.6	\$148,215	\$0	\$148,215	\$3,615	\$10,151	\$3,615	\$10,151
150	10572NAT	Graduate Diploma of Dramatherapy	11	9.0	\$147,600	\$0	\$147,600	\$13,418	\$16,364	\$13,418	\$16,364
151	10073NAT	Advanced Diploma of Acting	17	17.0	\$145,883	\$0	\$145,883	\$8,581	\$8,581	\$8,581	\$8,581
152	SIS50310	Diploma of Outdoor Recreation	42	14.8	\$145,435	\$189	\$145,246	\$3,463	\$9,814	\$3,458	\$9,801
153	10074NAT	Advanced Diploma of Sports Therapy	31	10.6	\$143,703	\$632	\$143,071	\$4,636	\$13,606	\$4,615	\$13,546
154	39293QLD	Diploma of Justice Studies	69	15.3	\$140,800	\$0	\$140,800	\$2,041	\$9,199	\$2,041	\$9,199
155	10154NAT	Advanced Diploma of Therapeutic Arts in Counselling	41	14.0	\$139,339	\$0	\$139,339	\$3,399	\$9,964	\$3,399	\$9,964
156	10308NAT	Advanced Diploma of Professional Screenwriting	31	23.2	\$138,667	\$40	\$138,627	\$4,473	\$5,987	\$4,472	\$5,985
157	BSB61115	Advanced Diploma of Conveyancing	41	16.5	\$135,511	\$0	\$135,511	\$3,305	\$8,189	\$3,305	\$8,189
158	22283VIC	Advanced Diploma of Business (Public Relations)	34	15.2	\$126,564	\$26	\$126,538	\$3,722	\$8,304	\$3,722	\$8,302
159	BSB52415	Diploma of Marketing and Communication	20	9.0	\$125,971	\$0	\$125,971	\$6,299	\$13,960	\$6,299	\$13,960
160	MSL50109	Diploma of Laboratory Technology	45	21.9	\$122,309	\$0	\$122,309	\$2,718	\$5,573	\$2,718	\$5,573
161	HLT52115	Diploma of Traditional Chinese Medicine (TCM) Remedial Massage	30	13.6	\$121,756	\$0	\$121,756	\$4,059	\$8,957	\$4,059	\$8,957
162	HLT52315	Diploma of Clinical Aromatherapy	23	9.8	\$118,825	\$0	\$118,825	\$5,166	\$12,108	\$5,166	\$12,108
163	10067NAT	Diploma of Fitness Coaching	19	6.3	\$118,750	\$0	\$118,750	\$6,250	\$18,760	\$6,250	\$18,760
164	SIT60212	Advanced Diploma of Events	24	9.1	\$119,747	\$2,378	\$117,369	\$4,989	\$13,188	\$4,890	\$12,926

Rank	Course Code	Course name	Enrolments	EFTSL	Tuition fees	Paid upfront	Loans paid	Tuition fees per enrolment	Tuition fees per EFTSL	Loans per enrolment	Loans per EFTSL
165	10454NAT	Diploma of Nutrition and Dietetics for Personal Trainers	33	14.4	\$116,214	\$0	\$116,214	\$3,522	\$8,070	\$3,522	\$8,070
166	10445NAT	Diploma of Ministry (Christian Studies) (Youth Work) (Pastoral Care) (Pastoral Counselling)	35	22.3	\$113,652	\$0	\$113,652	\$3,247	\$5,091	\$3,247	\$5,091
167	10318NAT	Diploma of TESOL (Teaching English to Speakers of Other Languages)	40	20.2	\$111,688	\$0	\$111,688	\$2,792	\$5,528	\$2,792	\$5,528
168	10030NAT	Diploma of Positive Psychology and Wellbeing	33	16.1	\$111,263	\$0	\$111,263	\$3,372	\$6,900	\$3,372	\$6,900
169	10118NAT	Diploma of Social Media Marketing	36	16.2	\$104,900	\$759	\$104,141	\$2,914	\$6,488	\$2,893	\$6,441
170	CUA60315	Advanced Diploma of Graphic Design	19	9.6	\$102,475	\$0	\$102,475	\$5,393	\$10,682	\$5,393	\$10,682
171	CPP50611	Diploma of Security and Risk Management	19	8.5	\$100,719	\$0	\$100,719	\$5,301	\$11,902	\$5,301	\$11,902
172	HLT60412	Advanced Diploma of Dental Prosthetics	8	2.4	\$99,750	\$0	\$99,750	\$12,469	\$42,000	\$12,469	\$42,000
173	SIB50210	Diploma of Salon Management	26	6.4	\$98,895	\$0	\$98,895	\$3,804	\$15,485	\$3,804	\$15,485
174	10177NAT	Diploma of Clinical Hypnotherapy	12	8.0	\$96,000	\$0	\$96,000	\$8,000	\$12,001	\$8,000	\$12,001
175	CUA50213	Diploma of Musical Theatre	8	6.4	\$96,000	\$0	\$96,000	\$12,000	\$15,000	\$12,000	\$15,000
176	CHC81115	Graduate Diploma of Family Dispute Resolution	14	4.9	\$95,550	\$0	\$95,550	\$6,825	\$19,500	\$6,825	\$19,500
177	22200VIC	Advanced Diploma of Justice	41	25.5	\$96,396	\$1,230	\$95,166	\$2,351	\$3,777	\$2,321	\$3,728
178	BSB51615	Diploma of Quality Auditing	22	8.9	\$95,315	\$305	\$95,010	\$4,332	\$10,742	\$4,319	\$10,708
179	ACM50110	Diploma of Animal Technology	43	14.7	\$94,394	\$0	\$94,394	\$2,195	\$6,409	\$2,195	\$6,409
180	ICT50515	Diploma of Database Design and Development	16	6.9	\$91,095	\$0	\$91,095	\$5,693	\$13,228	\$5,693	\$13,228
181	SIT50412	Diploma of Holiday Parks and Resorts	11	4.8	\$89,275	\$0	\$89,275	\$8,116	\$18,598	\$8,116	\$18,598
182	CUL50111	Diploma of Library and Information Services	65	17.6	\$87,307	\$0	\$87,307	\$1,343	\$4,966	\$1,343	\$4,966
183	AHC50616	Diploma of Landscape Design	29	9.5	\$86,316	\$0	\$86,316	\$2,976	\$9,114	\$2,976	\$9,114
184	MST60116	Advanced Diploma of Applied Fashion Design and Merchandising	23	5.4	\$82,493	\$0	\$82,493	\$3,587	\$15,254	\$3,587	\$15,254
185	HLT57415	Diploma of Audiometry	27	10.4	\$78,683	\$0	\$78,683	\$2,914	\$7,544	\$2,914	\$7,544
186	10459NAT	Diploma of Golf Management	6	3.0	\$71,850	\$0	\$71,850	\$11,975	\$23,950	\$11,975	\$23,950
187	10036NAT	Diploma of Ministry (Insert Stream)	31	12.1	\$68,445	\$0	\$68,445	\$2,208	\$5,639	\$2,208	\$5,639
188	52762WA	Diploma of Fashion Products and Markets	11	10.7	\$68,241	\$0	\$68,241	\$6,204	\$6,365	\$6,204	\$6,365
189	AHC50416	Diploma of Horticulture	25	12.0	\$67,700	\$270	\$67,430	\$2,708	\$5,629	\$2,697	\$5,607
190	CUA60715	Advanced Diploma of Visual Arts	20	7.9	\$66,706	\$0	\$66,706	\$3,335	\$8,492	\$3,335	\$8,492
191	CUV50211	Diploma of Ceramics	21	6.4	\$66,444	\$0	\$66,444	\$3,164	\$10,388	\$3,164	\$10,388
192	CUS60209	Advanced Diploma of Sound Production	19	6.5	\$63,167	\$0	\$63,167	\$3,325	\$9,778	\$3,325	\$9,778
193	BSB52015	Diploma of Conveyancing	27	10.5	\$62,398	\$0	\$62,398	\$2,311	\$5,917	\$2,311	\$5,917
194	AHC50110	Diploma of Agriculture	29	10.9	\$62,091	\$0	\$62,091	\$2,141	\$5,711	\$2,141	\$5,711
195	10008NAT	Advanced Diploma of Share Trading and Investment	10	4.6	\$62,043	\$0	\$62,043	\$6,204	\$13,429	\$6,204	\$13,429
196	10435NAT	Advanced Diploma of Christian Ministry and Theology	18	14.7	\$56,920	\$0	\$56,920	\$3,162	\$3,868	\$3,162	\$3,868
197	LMT60507	Advanced Diploma of Fashion and Textiles Merchandising	9	2.9	\$52,871	\$0	\$52,871	\$5,875	\$18,026	\$5,875	\$18,026
198	CHC52115	Diploma of Community Development	28	13.2	\$52,165	\$225	\$51,940	\$1,863	\$3,949	\$1,855	\$3,932
199	AVI50510	Diploma of Aviation (Flight Instructor)	7	1.1	\$61,702	\$10,183	\$51,519	\$8,815	\$57,079	\$7,360	\$47,658
200	ICT60515	Advanced Diploma of Computer Systems Technology	26	10.8	\$50,237	\$254	\$49,983	\$1,932	\$4,645	\$1,922	\$4,622
201	22260VIC	Diploma of Applied Horticultural Science	15	11.9	\$48,830	\$0	\$48,830	\$3,255	\$4,113	\$3,255	\$4,113
202	UEE50511	Diploma of Electronics and Communications Engineering	19	6.5	\$46,834	\$0	\$46,834	\$2,465	\$7,253	\$2,465	\$7,253
203	22233VIC	Diploma of Leadership Coaching and Mentoring	<5	1.6	\$46,116	\$0	\$46,116	n.p. <sup>4</sup>	\$28,823	n.p.	\$28,823

<sup>4</sup> n.p. stands for "not published". Numbers are not published if, in publishing them, it would reveal the value of another number that is listed as less than 5, due to privacy issues.

Rank	Course Code	Course name	Enrolments	EFTSL	Tuition fees	Paid upfront	Loans paid	Tuition fees per enrolment	Tuition fees per EFTSL	Loans per enrolment	Loans per EFTSL
204	CPP80213	Graduate Diploma of Building Design	5	2.5	\$45,000	\$0	\$45,000	\$9,000	\$18,000	\$9,000	\$18,000
205	HLT51015	Diploma of Paramedical Science	12	4.7	\$43,518	\$0	\$43,518	\$3,626	\$9,316	\$3,626	\$9,316
206	10263NAT	Diploma of Applied Geosciences	9	3.6	\$43,083	\$0	\$43,083	\$4,787	\$12,061	\$4,787	\$12,061
207	SIS50115	Diploma of Sport and Recreation Management	9	4.0	\$42,842	\$0	\$42,842	\$4,760	\$10,819	\$4,760	\$10,819
208	22197VIC	Diploma of Justice	25	25.9	\$40,067	\$1,489	\$38,578	\$1,603	\$1,546	\$1,543	\$1,489
209	CHC51308	Diploma of Education Support	14	5.8	\$38,500	\$0	\$38,500	\$2,750	\$6,696	\$2,750	\$6,696
210	FD50311	Diploma of Food Science and Technology	10	9.7	\$37,617	\$0	\$37,617	\$3,762	\$3,879	\$3,762	\$3,879
211	CUS60109	Advanced Diploma of Music	7	2.8	\$36,551	\$0	\$36,551	\$5,222	\$13,195	\$5,222	\$13,195
212	BSB60515	Advanced Diploma of Marketing	16	3.9	\$35,021	\$0	\$35,021	\$2,189	\$9,085	\$2,189	\$9,085
213	22245VIC	Graduate Diploma of Animal Biomechanical Medicine	11	5.1	\$34,794	\$0	\$34,794	\$3,163	\$6,874	\$3,163	\$6,874
214	40629SA	Advanced Diploma of Arts (Professional Writing)	24	5.1	\$32,903	\$0	\$32,903	\$1,371	\$6,467	\$1,371	\$6,467
215	MSS50216	Diploma of Environmental Monitoring and Technology	10	6.2	\$32,680	\$0	\$32,680	\$3,268	\$5,301	\$3,268	\$5,301
216	AHC51812	Diploma of Organic Farming	13	5.1	\$32,189	\$0	\$32,189	\$2,476	\$6,312	\$2,476	\$6,312
217	10434NAT	Diploma of Christian Ministry and Theology	19	7.9	\$31,970	\$0	\$31,970	\$1,683	\$4,030	\$1,683	\$4,030
218	AHC50510	Diploma of Arboriculture	16	15.5	\$31,350	\$0	\$31,350	\$1,959	\$2,020	\$1,959	\$2,020
219	10108NAT	Graduate Certificate in Organisational Coaching	5	0.9	\$31,500	\$269	\$31,231	\$6,300	\$35,714	\$6,246	\$35,409
220	CUA60213	Advanced Diploma of Live Production and Management Services	<5	2.0	\$31,000	\$0	\$31,000	n.p.	\$15,500	n.p.	\$15,500
221	CUA60113	Advanced Diploma of Dance (Elite Performance)	5	3.8	\$30,788	\$0	\$30,788	\$6,158	\$8,119	\$6,158	\$8,119
222	CUV60211	Advanced Diploma of Visual Arts	13	3.1	\$30,778	\$0	\$30,778	\$2,368	\$9,993	\$2,368	\$9,993
223	MEM50311	Diploma of Jewellery and Object Design	10	3.4	\$30,012	\$0	\$30,012	\$3,001	\$8,940	\$3,001	\$8,940
224	SIS50215	Diploma of Fitness	7	3.4	\$29,570	\$0	\$29,570	\$4,224	\$8,774	\$4,224	\$8,774
225	ICP50115	Diploma of Printing and Graphic Arts	<5	1.5	\$29,150	\$0	\$29,150	n.p.	\$19,437	n.p.	\$19,437
226	CPP50112	Diploma of Surveying	14	5.0	\$28,616	\$0	\$28,616	\$2,044	\$5,699	\$2,044	\$5,699
227	AHC51410	Diploma of Agribusiness Management	14	4.5	\$28,276	\$0	\$28,276	\$2,020	\$6,340	\$2,020	\$6,340
228	UEE50111	Diploma of Computer Systems Engineering	17	2.3	\$27,904	\$0	\$27,903	\$1,641	\$12,245	\$1,641	\$12,245
229	CHC62015	Advanced Diploma of Community Sector Management	11	5.7	\$31,113	\$3,220	\$27,893	\$2,828	\$5,490	\$2,536	\$4,922
230	CUS50309	Diploma of Music Business	5	2.1	\$27,750	\$0	\$27,750	\$5,550	\$13,504	\$5,550	\$13,504
231	22229VIC	Diploma of Engineering Technology	14	4.8	\$27,205	\$0	\$27,205	\$1,943	\$5,705	\$1,943	\$5,705
232	SIT60216	Advanced Diploma of Event Management	12	6.5	\$26,755	\$0	\$26,755	\$2,230	\$4,098	\$2,230	\$4,098
233	10220NAT	Diploma of Industrial Design	10	7.5	\$26,610	\$0	\$26,610	\$2,661	\$3,548	\$2,661	\$3,548
234	CUF50507	Diploma of Costume for Performance	6	1.8	\$26,468	\$0	\$26,468	\$4,411	\$14,338	\$4,411	\$14,338
235	LMT50607	Diploma of Fashion and Textiles Merchandising	8	2.3	\$27,934	\$1,556	\$26,378	\$3,492	\$12,156	\$3,297	\$11,479
236	10512NAT	Graduate Certificate in Wound Management	<5	3.2	\$26,211	\$0	\$26,211	n.p.	\$8,268	n.p.	\$8,268
237	10259NAT	Diploma of Arts (Acting)	7	2.0	\$24,140	\$0	\$24,140	\$3,449	\$12,143	\$3,449	\$12,143
238	HLT52515	Diploma of Reflexology	7	2.3	\$23,834	\$0	\$23,834	\$3,405	\$10,351	\$3,405	\$10,351
239	10221NAT	Advanced Diploma of Industrial Design	7	7.3	\$23,164	\$0	\$23,164	\$3,309	\$3,191	\$3,309	\$3,191
240	CHC50412	Diploma of Community Services (Alcohol, other drugs and mental health)	8	3.1	\$23,161	\$54	\$23,107	\$2,895	\$7,458	\$2,888	\$7,440
241	ICT60215	Advanced Diploma of Network Security	15	3.9	\$22,958	\$0	\$22,958	\$1,531	\$5,869	\$1,531	\$5,869
242	MEM50105	Diploma of Engineering - Advanced Trade	6	2.8	\$22,904	\$0	\$22,904	\$3,817	\$8,218	\$3,817	\$8,218
243	CPC50308	Diploma of Building and Construction (Management)	17	4.5	\$22,389	\$0	\$22,389	\$1,317	\$4,943	\$1,317	\$4,943
244	10352NAT	Diploma of Visual Communication (Design Communication / Photo Communication)	6	1.7	\$28,302	\$8,301	\$20,001	\$4,717	\$17,153	\$3,334	\$12,122

Rank	Course Code	Course name	Enrolments	EFTSL	Tuition fees	Paid upfront	Loans paid	Tuition fees per enrolment	Tuition fees per EFTSL	Loans per enrolment	Loans per EFTSL
245	TAE50111	Diploma of Vocational Education and Training	11	4.8	\$19,902	\$0	\$19,902	\$1,809	\$4,144	\$1,809	\$4,144
246	CPP60312	Advanced Diploma of Surveying	9	4.5	\$19,736	\$0	\$19,736	\$2,193	\$4,414	\$2,193	\$4,414
247	CPP50116	Diploma of Surveying	6	4.5	\$19,144	\$0	\$19,144	\$3,191	\$4,289	\$3,191	\$4,289
248	ICT60415	Advanced Diploma of Information Technology Project Management	10	2.2	\$18,697	\$0	\$18,697	\$1,870	\$8,499	\$1,870	\$8,499
249	BSB50115	Diploma of Advertising	6	1.7	\$18,577	\$0	\$18,577	\$3,096	\$10,782	\$3,096	\$10,782
250	CPC50612	Diploma of Hydraulic Services Design	7	1.7	\$17,987	\$0	\$17,987	\$2,570	\$10,464	\$2,570	\$10,464
251	BSB50207	Diploma of Business	5	2.3	\$17,075	\$0	\$17,075	\$3,415	\$7,424	\$3,415	\$7,424
252	MEA50215	Diploma of Aeroskills (Mechanical)	<5	1.0	\$16,799	\$0	\$16,799	n.p.	\$16,231	n.p.	\$16,231
253	AHC51513	Diploma of Viticulture	5	2.4	\$16,244	\$0	\$16,244	\$3,249	\$6,699	\$3,249	\$6,699
254	RII50513	Diploma of Civil Construction Design	5	2.4	\$15,886	\$0	\$15,886	\$3,177	\$6,543	\$3,177	\$6,543
255	CHC51115	Diploma of Financial Counselling	8	3.6	\$16,179	\$319	\$15,860	\$2,022	\$4,498	\$1,982	\$4,410
256	SIT60112	Advanced Diploma of Travel and Tourism	<5	1.2	\$15,499	\$0	\$15,499	n.p.	\$13,247	n.p.	\$13,247
257	TAE50211	Diploma of Training Design and Development	5	2.5	\$15,448	\$0	\$15,448	\$3,090	\$6,181	\$3,090	\$6,181
258	10326NAT	Diploma of Education (Aboriginal and Torres Strait Islander)	6	6.0	\$16,095	\$1,021	\$15,074	\$2,683	\$2,687	\$2,512	\$2,517
259	UEE62211	Advanced Diploma of Electrical - Engineering	15	2.7	\$14,844	\$90	\$14,754	\$990	\$5,474	\$984	\$5,440
260	BSB60915	Advanced Diploma of Management (Human Resources)	12	3.1	\$14,357	\$0	\$14,357	\$1,196	\$4,567	\$1,196	\$4,567
261	10128NAT	Graduate Certificate in Logistics and Supply Chain Management	5	0.6	\$14,000	\$0	\$14,000	\$2,800	\$21,978	\$2,800	\$21,978
262	52357	Advanced Diploma of Jewellery Design	<5	2.7	\$13,804	\$0	\$13,804	n.p.	\$5,108	n.p.	\$5,108
263	UEE50411	Diploma of Electrical Engineering	5	1.9	\$13,687	\$0	\$13,687	\$2,737	\$7,382	\$2,737	\$7,382
264	10045NAT	Graduate Certificate in Architectural Digital Illustration	5	2.3	\$13,500	\$0	\$13,500	\$2,700	\$6,000	\$2,700	\$6,000
265	MAR50415	Diploma of Maritime Operations (Master up to 500 GT)	<5	1.0	\$12,547	\$0	\$12,547	n.p.	\$12,241	n.p.	\$12,241
266	CPC60212	Advanced Diploma of Building and Construction (Management)	6	2.2	\$12,479	\$0	\$12,479	\$2,080	\$5,662	\$2,080	\$5,662
267	AHC50710	Diploma of Parks and Gardens Management	<5	1.5	\$12,433	\$0	\$12,433	n.p.	\$8,289	n.p.	\$8,289
268	MSS50211	Diploma of Environmental Monitoring and Technology	6	3.4	\$11,790	\$0	\$11,790	\$1,965	\$3,493	\$1,965	\$3,493
269	30870QLD	Diploma of Permaculture	<5	1.5	\$11,700	\$0	\$11,700	n.p.	\$7,800	n.p.	\$7,800
270	TAE50216	Diploma of Training Design and Development	<5	1.5	\$11,636	\$0	\$11,636	n.p.	\$7,602	n.p.	\$7,602
271	39296QLD	Graduate Certificate in TESOL	5	1.1	\$11,250	\$0	\$11,250	\$2,250	\$10,465	\$2,250	\$10,465
272	RII50413	Diploma of Civil Construction Management	<5	0.7	\$11,200	\$0	\$11,200	n.p.	\$16,802	n.p.	\$16,802
273	31004QLD	Advanced Diploma of Management in Christian Ministry	<5	0.9	\$11,133	\$0	\$11,133	n.p.	\$12,234	n.p.	\$12,234
274	10048NAT	Diploma of Payroll Management	6	1.0	\$11,016	\$0	\$11,016	\$1,836	\$11,535	\$1,836	\$11,535
275	10129NAT	Graduate Certificate in Teaching English as an Additional Language	<5	1.6	\$11,000	\$0	\$11,000	n.p.	\$6,820	n.p.	\$6,820
276	CUA51215	Diploma of Ceramics	<5	1.0	\$10,824	\$0	\$10,824	n.p.	\$10,824	n.p.	\$10,824
277	CUV60411	Advanced Diploma of Graphic Design	<5	1.7	\$10,335	\$0	\$10,335	n.p.	\$5,993	n.p.	\$5,993
278	52724WA	Advanced Diploma of Civil and Structural Engineering	<5	2.0	\$10,269	\$0	\$10,269	n.p.	\$5,043	n.p.	\$5,043
279	10060NAT	Advanced Diploma of International Hotel and Resort Management	<5	0.9	\$9,963	\$0	\$9,963	n.p.	\$11,194	n.p.	\$11,194
280	HLT50113	Diploma of Aboriginal and/or Torres Strait Islander Primary Health Care	<5	0.7	\$9,669	\$0	\$9,669	n.p.	\$14,762	n.p.	\$14,762
281	10284NAT	Diploma of Crime and Justice Studies	<5	0.9	\$9,641	\$0	\$9,641	n.p.	\$10,202	n.p.	\$10,202
282	AHC60110	Advanced Diploma of Agriculture	<5	1.7	\$9,499	\$0	\$9,499	n.p.	\$5,491	n.p.	\$5,491
283	CUA50513	Diploma of Live Production Design	<5	0.7	\$9,262	\$0	\$9,262	n.p.	\$13,824	n.p.	\$13,824
284	SFI50111	Diploma of Aquaculture	<5	1.1	\$9,059	\$0	\$9,059	n.p.	\$8,206	n.p.	\$8,206
285	52725WA	Diploma of Civil and Structural Engineering	<5	1.8	\$8,502	\$0	\$8,502	n.p.	\$4,791	n.p.	\$4,791
286	MAR60315	Advanced Diploma of Maritime Operations (Master Unlimited)	<5	1.1	\$8,301	\$0	\$8,301	n.p.	\$7,585	n.p.	\$7,585



Rank	Course Code	Course name	Enrolments	EFTSL	Tuition fees	Paid upfront	Loans paid	Tuition fees per enrolment	Tuition fees per EFTSL	Loans per enrolment	Loans per EFTSL
287	RII50515	Diploma of Civil Construction Design	<5	1.5	\$7,912	\$0	\$7,912	n.p.	\$5,283	n.p.	\$5,283
288	CPP50511	Diploma of Property Services (Asset and Facility Management)	<5	3.9	\$7,770	\$17	\$7,753	n.p.	\$1,989	n.p.	\$1,984
289	10436NAT	Graduate Certificate in Christian Ministry and Theology	6	1.1	\$7,150	\$0	\$7,150	\$1,192	\$6,603	\$1,192	\$6,603
290	TLI50813	Diploma of Customs Broking	<5	1.6	\$6,955	\$0	\$6,955	n.p.	\$4,347	n.p.	\$4,347
291	ICT50815	Diploma of Systems Analysis and Design	<5	0.7	\$6,924	\$0	\$6,924	n.p.	\$9,485	n.p.	\$9,485
292	AUR50112	Diploma of Automotive Management	<5	0.7	\$6,882	\$0	\$6,882	n.p.	\$10,427	n.p.	\$10,427
293	10112NAT	Graduate Certificate in Applied Business	<5	0.2	\$7,000	\$300	\$6,700	n.p.	\$29,762	n.p.	\$28,486
294	RII50415	Diploma of Civil Construction Management	<5	0.7	\$6,648	\$0	\$6,648	n.p.	\$10,023	n.p.	\$10,023
295	BSB50407	Diploma of Business Administration	<5	1.0	\$6,280	\$0	\$6,280	n.p.	\$6,068	n.p.	\$6,068
296	TAE80210	Graduate Diploma of Management (Learning)	<5	0.7	\$6,260	\$0	\$6,260	n.p.	\$9,485	n.p.	\$9,485
297	UEE61711	Advanced Diploma of Engineering Technology - Electronics	<5	0.5	\$5,938	\$0	\$5,938	n.p.	\$11,876	n.p.	\$11,876
298	HLT52012	Diploma of Practice Management	<5	1.3	\$5,833	\$0	\$5,833	n.p.	\$4,376	n.p.	\$4,376
299	CPP50216	Diploma of Spatial Information Services	<5	0.9	\$5,750	\$0	\$5,750	n.p.	\$6,534	n.p.	\$6,534
300	TAE80113	Graduate Diploma of Adult Language, Literacy and Numeracy Practice	<5	0.5	\$5,620	\$0	\$5,620	n.p.	\$10,604	n.p.	\$10,604
301	HLT60712	Advanced Diploma of Ayurveda	7	0.6	\$5,608	\$0	\$5,608	\$801	\$9,732	\$801	\$9,732
302	AHC60310	Advanced Diploma of Agribusiness Management	<5	0.5	\$5,545	\$0	\$5,545	n.p.	\$11,090	n.p.	\$11,090
303	AHC51010	Diploma of Sports Turf Management	<5	2.0	\$5,456	\$0	\$5,456	n.p.	\$2,759	n.p.	\$2,759
304	AHC51016	Diploma of Sports Turf Management	<5	1.5	\$5,456	\$0	\$5,456	n.p.	\$3,571	n.p.	\$3,571
305	CPP50212	Diploma of Spatial Information Services	<5	0.7	\$5,140	\$0	\$5,140	n.p.	\$7,788	n.p.	\$7,788
306	22284VIC	Diploma of Business (Public Relations)	<5	0.7	\$5,613	\$613	\$5,000	n.p.	\$8,249	n.p.	\$7,348
307	10437NAT	Graduate Diploma of Christian Ministry and Theology	<5	0.7	\$4,950	\$0	\$4,950	n.p.	\$6,603	n.p.	\$6,603
308	PSP50916	Diploma of Interpreting (LOTE-English)	<5	1.1	\$4,900	\$0	\$4,900	n.p.	\$4,558	n.p.	\$4,558
309	HLT52615	Diploma of Ayurvedic Lifestyle Consultation	<5	0.7	\$4,868	\$0	\$4,868	n.p.	\$6,810	n.p.	\$6,810
310	PSP52412	Diploma of Interpreting	<5	1.5	\$4,525	\$0	\$4,525	n.p.	\$3,017	n.p.	\$3,017
311	22273VIC	Diploma of Agronomy	<5	0.9	\$4,515	\$0	\$4,515	n.p.	\$4,996	n.p.	\$4,996
312	22230VIC	Graduate Certificate in Management	<5	1.0	\$4,375	\$0	\$4,375	n.p.	\$4,250	n.p.	\$4,250
313	CHC80208	Graduate Diploma of Relationship Counselling	<5	0.4	\$4,298	\$0	\$4,298	n.p.	\$11,101	n.p.	\$11,101
314	SIR50112	Diploma of Retail Management	<5	0.5	\$4,297	\$0	\$4,297	n.p.	\$8,594	n.p.	\$8,594
315	MSF50313	Diploma of Furniture Design and Technology	<5	1.0	\$4,000	\$0	\$4,000	n.p.	\$4,000	n.p.	\$4,000
316	AHC50116	Diploma of Agriculture	<5	1.1	\$3,896	\$0	\$3,896	n.p.	\$3,610	n.p.	\$3,610
317	ICT60315	Advanced Diploma of Information Technology Business Analysis	<5	0.3	\$3,825	\$0	\$3,825	n.p.	\$12,240	n.p.	\$12,240
318	CHC50108	Diploma of Disability	<5	0.5	\$3,659	\$0	\$3,659	n.p.	\$7,840	n.p.	\$7,840
319	ICA50411	Diploma of Information Technology Networking	<5	0.5	\$3,286	\$0	\$3,286	n.p.	\$6,520	n.p.	\$6,520
320	CUA50113	Diploma of Dance (Elite Performance)	<5	0.6	\$3,193	\$0	\$3,193	n.p.	\$4,920	n.p.	\$4,920
321	UEE51111	Diploma of Engineering Technology - Refrigeration and Air-conditioning	<5	0.8	\$3,250	\$161	\$3,090	n.p.	\$4,333	n.p.	\$4,119
322	52694WA	Diploma of Aviation Management	<5	0.4	\$3,066	\$0	\$3,066	n.p.	\$7,158	n.p.	\$7,158
323	HLT61107	Advanced Diploma of Nursing (Enrolled/Division 2 nursing)	<5	0.1	\$3,000	\$0	\$3,000	n.p.	\$26,316	n.p.	\$26,316
324	CUA60515	Advanced Diploma of Music Industry	<5	0.6	\$2,552	\$0	\$2,552	n.p.	\$3,988	n.p.	\$3,988
325	UEE51211	Diploma of Air-conditioning and Refrigeration Engineering	<5	0.2	\$2,430	\$0	\$2,430	n.p.	\$12,857	n.p.	\$12,857
326	10431NAT	Diploma of Language Teaching - TESOL	<5	1.1	\$2,360	\$0	\$2,360	n.p.	\$2,226	n.p.	\$2,226
327	SIT60116	Advanced Diploma of Travel and Tourism Management	<5	1.0	\$2,296	\$0	\$2,296	n.p.	\$2,296	n.p.	\$2,296
328	NWP50107	Diploma of Water Operations	<5	0.4	\$2,200	\$0	\$2,200	n.p.	\$5,759	n.p.	\$5,759

Rank	Course Code	Course name	Enrolments	EFTSL	Tuition fees	Paid upfront	Loans paid	Tuition fees per enrolment	Tuition fees per EFTSL	Loans per enrolment	Loans per EFTSL
329	CUA60415	Advanced Diploma of Creative Product Development	<5	0.2	\$2,200	\$1	\$2,199	n.p.	\$12,571	n.p.	\$12,566
330	SFI50411	Diploma of Fisheries Compliance	<5	0.4	\$2,089	\$0	\$2,089	n.p.	\$5,493	n.p.	\$5,493
331	52759WA	Advanced Diploma of Engineering (Oil and Gas)	<5	0.5	\$2,056	\$0	\$2,056	n.p.	\$3,918	n.p.	\$3,918
332	BSB51107	Diploma of Management	<5	0.4	\$2,025	\$0	\$2,025	n.p.	\$5,625	n.p.	\$5,625
333	PSP60916	Advanced Diploma of Interpreting (LOTE-English)	<5	0.5	\$2,015	\$0	\$2,015	n.p.	\$4,369	n.p.	\$4,369
334	BSB50815	Diploma of International Business	<5	0.5	\$1,986	\$0	\$1,986	n.p.	\$4,128	n.p.	\$4,128
335	10180NAT	Graduate Diploma of Virtualisation Technologies	<5	0.1	\$1,950	\$0	\$1,950	n.p.	\$14,629	n.p.	\$14,629
336	ICA50711	Diploma of Software Development	<5	0.5	\$1,943	\$0	\$1,943	n.p.	\$3,854	n.p.	\$3,854
337	AHC50810	Diploma of Production Nursery Management	<5	0.4	\$1,912	\$0	\$1,912	n.p.	\$4,780	n.p.	\$4,780
338	ICT60115	Advanced Diploma of Information Technology	<5	0.5	\$1,776	\$0	\$1,776	n.p.	\$3,271	n.p.	\$3,271
339	BSB61215	Advanced Diploma of Program Management	<5	0.1	\$1,663	\$0	\$1,663	n.p.	\$20,285	n.p.	\$20,285
340	FNS51515	Diploma of Credit Management	<5	0.3	\$1,650	\$0	\$1,650	n.p.	\$6,600	n.p.	\$6,600
341	MAR60115	Advanced Diploma of Maritime Operations (Marine Engineering Class 2)	<5	0.3	\$1,497	\$0	\$1,497	n.p.	\$5,691	n.p.	\$5,691
342	PSP50116	Diploma of Government	<5	0.1	\$1,263	\$0	\$1,263	n.p.	\$15,407	n.p.	\$15,407
343	22308VIC	Diploma of Horse Breeding (Stud Management)	<5	0.2	\$1,218	\$0	\$1,218	n.p.	\$5,152	n.p.	\$5,152
344	AHC51416	Diploma of Agribusiness Management	<5	0.1	\$1,200	\$0	\$1,200	n.p.	\$13,483	n.p.	\$13,483
345	10257NAT	Diploma of Food and Wine Management	<5	0.1	\$917	\$0	\$917	n.p.	\$10,657	n.p.	\$10,657
346	10373NAT	Graduate Diploma of Applied Pharmacy Practice	<5	0.3	\$875	\$0	\$875	n.p.	\$2,612	n.p.	\$2,612
347	22267VIC	Diploma of Electrical Project Management	<5	0.2	\$857	\$0	\$857	n.p.	\$4,001	n.p.	\$4,001
348	FNS50210	Diploma of Accounting	<5	0.2	\$820	\$0	\$820	n.p.	\$3,694	n.p.	\$3,694
349	CUV60311	Advanced Diploma of Creative Product Development	<5	0.1	\$585	\$0	\$585	n.p.	\$6,693	n.p.	\$6,693
350	CHC50612	Diploma of Community Services Work	<5	0.0	\$354	\$0	\$354	n.p.	\$9,973	n.p.	\$9,973
351	PSP61112	Advanced Diploma of Interpreting	<5	0.0	\$288	\$0	\$288	n.p.	\$7,491	n.p.	\$7,491
352	10052NAT	Advanced Diploma of Health Science (Soft Tissue Therapy)	<5	0.1	\$280	\$0	\$280	n.p.	\$2,000	n.p.	\$2,000
353	52697WA	Diploma of Marine Studies	<5	0.0	\$277	\$0	\$277	n.p.	\$6,016	n.p.	\$6,016
354	FNS50915	Diploma of Banking Services Management	<5	0.1	\$252	\$0	\$252	n.p.	\$3,036	n.p.	\$3,036
		<b>Total:</b>	<b>50,210</b>	<b>25,972.2</b>	<b>\$310,788,308</b>	<b>\$3,021,385</b>	<b>\$307,630,755</b>	<b>\$6,190</b>	<b>\$11,966</b>	<b>\$6,127</b>	<b>\$11,845</b>