



Australian Government  
Department of Education

# Information Session: Hear from existing Regional University Study Hubs

2024 Application Round – 9 September 2024



# Welcome

- Department representatives:
  - Regional University Study Hubs Team
  
- Regional University Study Hub representatives:
  - Mark van Bergen – Centre Manager, Country Universities Centre Ovens Murray (Wangaratta, Corryong, Mansfield, VIC)
  - Hayley Laney – Manager of Education & Workforce, Barossa Regional University Campus (Nuriootpa, SA)
  - Kristina Low – Centre Coordinator, Great Southern Universities Centre (Albany, WA).



# What are Regional University Study Hubs?

Regional University Study Hubs (Regional Hubs, formerly Regional University Centres) are facilities that support regional and remote students to undertake tertiary studies whilst remaining in their local community.

Regional Hubs provide:

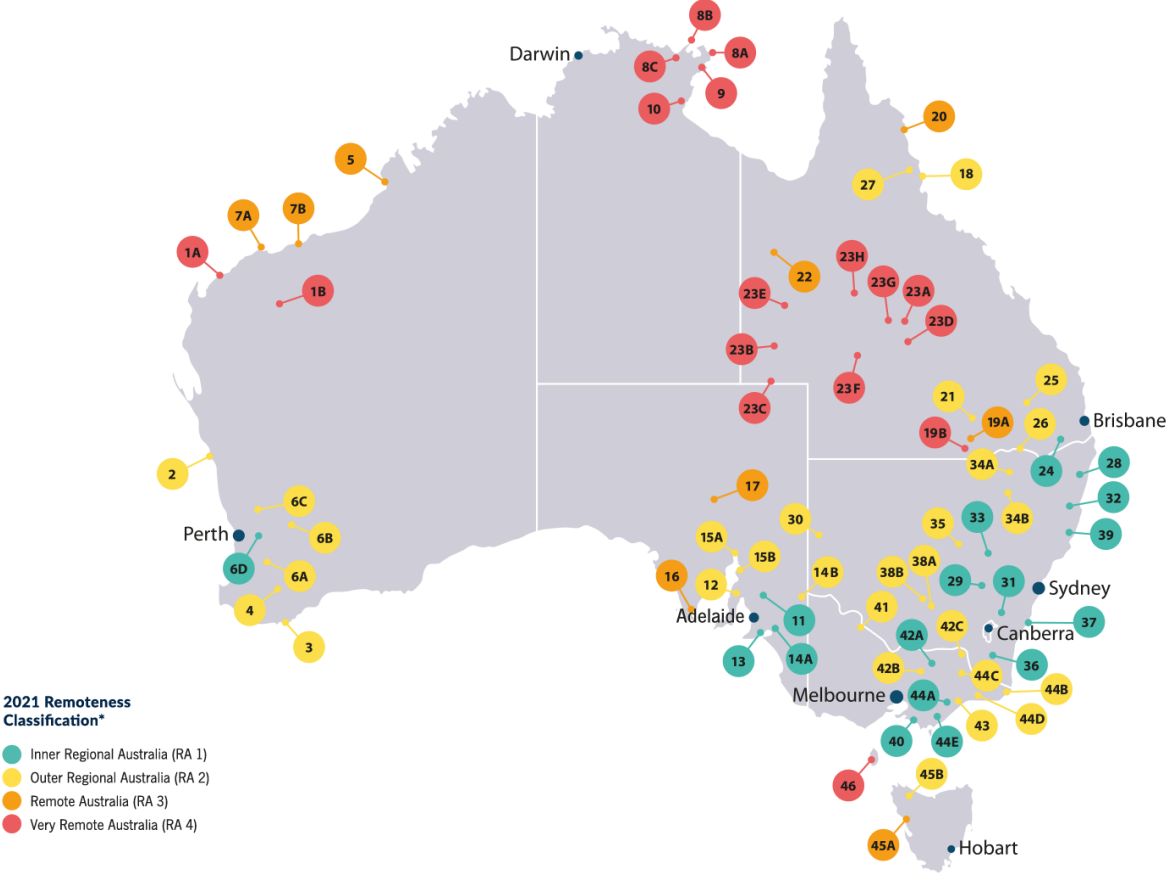
- IT Infrastructure
- Study spaces
- Student support services
- Academic skills support
- A network of like-minded peers
- Other campus-style facilities



*Great Southern Universities Centre, Western Australia*

Regional Hubs are **driven by the local community** to respond to local needs.

# Existing Regional University Study Hubs



## About this session

- This session is focussed on providing potential applicants to the 2024 Regional University Study Hubs funding round insight into the day-to-day operations and experiences of existing Hubs.
- The department previously held an information session which provided an overview of the Regional University Study Hubs program and the current application round. You can access the presentation from that session on the department's website.
- **Important:** Any questions relating to the current Application Round must be directed to the Department.



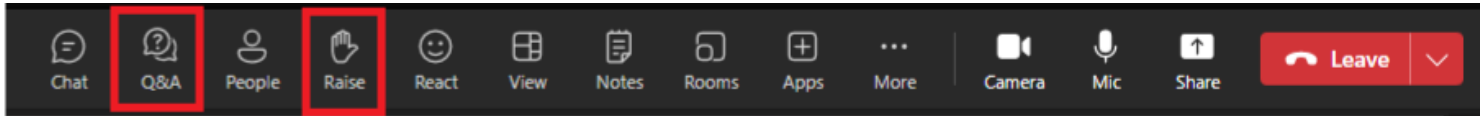
## Important Note

- The views and opinions expressed by Regional University Study Hub representatives in today's session are their own, and do not reflect the views and opinions of the department.
- Hub representatives have been invited from different geographic areas and with different operating models/affiliations. The department does not endorse a particular operating model for Regional University Study Hubs. The design of each Hub should be tailored to meet the needs of the local community it serves.



# Housekeeping

- You will have an opportunity to ask questions of each speaker at the end of their presentation.
- You can turn your microphone on and off yourself. If you would like to ask a question, you can either:
  - a) use the Q&A function (at the top of the screen) to write a question, or
  - b) raise your hand (at the top of the screen) and we will invite you to un-mute and ask your question.



- You can choose to have your camera on or off for the duration of the session.



Corryong



Wangaratta



Mansfield



# Country Universities Centre

OVENS MURRAY

Centre Manager  
Mark van Bergen



5775 2077



Kick start your learning journey with us today!





**2013**

CUC Snowy Monaro (Cooma)

**2018**

CUC Goulburn (Goulburn)  
CUC Far West (Broken Hill)

**2019**

CUC Clarence Valley (Grafton)  
CUC North West (Narrabri and Moree)  
CUC Western Riverina (Griffith and Leeton)

**2020**

CUC Parkes (Parkes)

**2021**

CUC Bass Coast (Wonthaggi)  
CUC Macleay Valley (Kempsey)  
CUC Maranoa (Roma)  
CUC Balonne (St George and Dirranbandi)  
CUC Southern Shoalhaven (Ulladulla)

**2022**

CUC Ovens Murray (Wangaratta, Corryong and Mansfield)

**2023**

CUC Cowra Region (Cowra)  
CUC Cape York (Cooktown)  
CUC Mallee (Swan Hill)

**2024**

CUC Mudgee Region (Mudgee)  
CUC Mount Isa (Mount Isa)  
CUC Southern Downs (Warwick)  
CUC Western Downs (Chinchilla)  
CUC RAPAD CWQ (Longreach, Winton, Barcaldine, Jundah, Birdsville, Blackall, Boulia, Bedourie)  
CUC Isaac (Moranbah and Clermont)



# Key Services

Available at all 3 CUC Ovens Murray locations



## Centre Operations

- Dedicated study spaces
- Student access 5am-12am, 7 days
- Dual Screen PCs, Wi-fi & Printing
- Student Kitchen Facilities
- Bookable Breakout Spaces



## Student Services

- Learning Skills Advisor
- Administrative Support
- Prospective Student Guidance
- Exam invigilation services

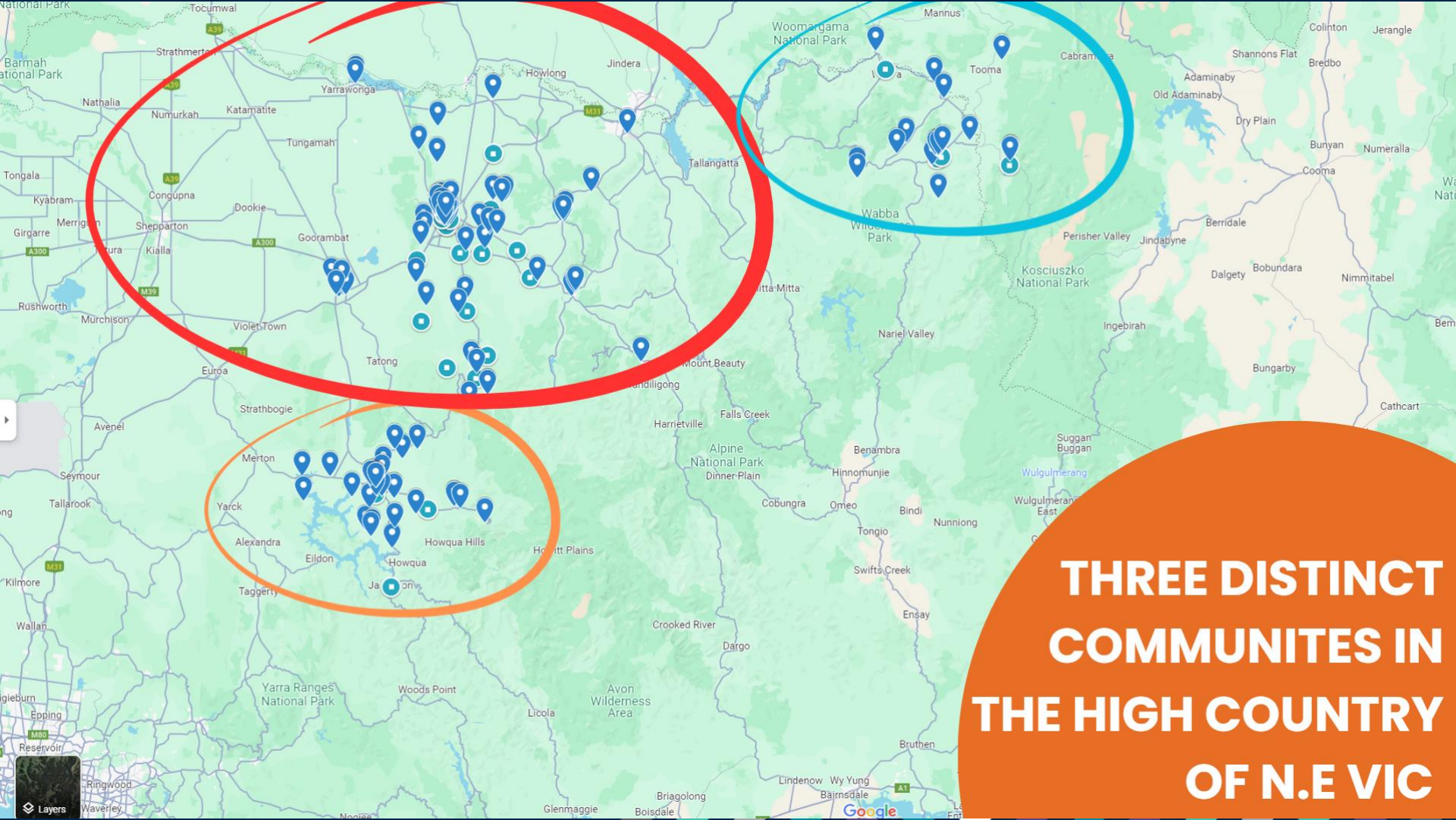


## Widening Participation

School programs to inform aspiration.

Supporting community expos and events.

Widening Participation Coordinator  
(0.6 FTE) – across 3 communities



**THREE DISTINCT  
COMMUNITIES IN  
THE HIGH COUNTRY  
OF N.E VIC**

# CORRYONG

- Population 1600 in Corryong, (6500 across the Shire) - Nearest major centre is Wodonga 1.5hr drive one way.
- Located in three Modular Buildings that was Towong Shire's - 'Corryong Innovation Space'
- Most students use the Dual Screen Computers. Purchased additional computers each year to meet demand.
- Digital Literacy support in high demand.
- Student use is highest when staffed



## Staffing

Education Coordinator  
(0.6 FTE spread over 4 days)

Learning Skills Advisor  
(Casual - up to 8 hrs/week during semester)

Centre Manager - visit  
(1 day per fortnight)

# MANSFIELD

- Population 4500 in Mansfield, (8000 across the Shire) - 18% growth in 5 years. Mansfield is Mount Buller Ski Resort's closest town.
- Co-located within Mansfield Adult Community Education Building.
- Most students use personal laptops. Purchased sound reduction booth, plug in monitor and sit/stand desk to support students in a limited space.
- Student usage patterns are quite varied.



## Staffing

Education Coordinator  
(0.6 FTE 3 days)

Learning Skills Advisor  
(Casual - up to 8 hrs/week during semester)

Centre Manager - visit  
(1 day per fortnight)

# WANGARATTA

- Population 20,000 in Wangaratta (29,000 across the Rural City) - Regional Centre for a number of services.
- Located within GOTAFE campus. Currently refurbishing the stand alone building.
- Mix of Laptop and Centre PC's (with a number of students 'cooking on 3 burners')
- Bookable rooms at a premium. Host and invigilate more exams.
- Student usage patterns are very varied.



## Staffing

**Centre Administrator**

Full Time - Supports admin for 3 sites

**Learning Skills Advisor**

(Casual - up to 20 hrs/week during semester)

**Centre Manager**

Full time. 4 days at Wangaratta



## LEARNINGS & INSIGHTS

### OUR 3 COMMUNITIES ARE DIFFERENT

- Size, demographics, distance, strengths & challenges.
- Student needs
- Facilities available
- Community partnerships and champions
- Usage patterns & requirements

### SIMILAR NEEDS IN EACH COMMUNITY

- Local staff that know their community
- Responsive to student needs
- Access to in-person academic help
- Quiet, dedicated study space/s
- Access at times that suit students
- Printing, wi-fi (...and tea/coffee/biscuits)
- Informing Higher Ed. aspiration

# Students supported in the last 2 years

**312**  
students



**71**  
different  
institutions

26 Universities & 45 higher education providers (inc. TAFE)



**46%**  
are the first in  
their family  
to study

**Online** 60%

**Multi-modal** 23%

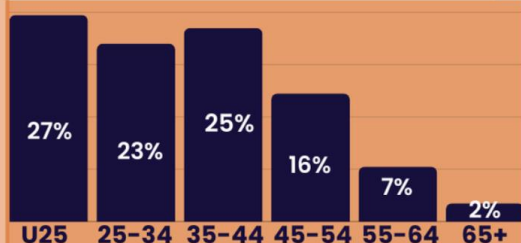
**On Campus** 17%

0 10 20 30 40 50 60

43%  
study full  
time



57%  
study part  
time



**20**  
different  
areas of  
study

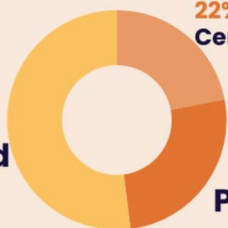
1% non binary/  
not specified

**20%**  
male

**79%**  
female



**52%**  
Undergrad



**22%**  
Cert/Diploma

**26%**  
Postgrad

**TOP**  
Areas of  
Study

32%

Health

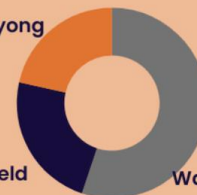
16%

Education

15%

Psychology,  
social work &  
Community  
Services

Corryong



Mansfield

Wangaratta



# Building a student community

—  
**Hayley Laney**

Manager Education & Workforce





# Location

Located in Nuriootpa, Barossa Regional University Campus Services students within the Barossa, Light, Gawler and Adelaide plain Councils.

Approximately 1 hour North of Adelaide, BRUC is a standalone study hub Cohort 1.

South Australian Regions are unique, with most students that attend BRUC being classified as Inner-Regional. There is generally high aspiration within our community to study Higher Education as well as a range of Vocational pathways.

The peri-urban location presents both advantages and disadvantages to students from the region, giving a wide choice of potential career pathways although with limited services to access higher education.





# Services



## Facilities



BRUC maintains 4 dedicated teaching or collaboration spaces, a studio pod, individual study desks and a seminar space.

High Speed Wifi Network and Printing Facilities are available, as well as several high speed dedicated PC's. We provide Tea and Coffee making facilities as well as a breakout space for student use.

Students have 24 Hour access upon application



## Student Support

Our team provides point of call support throughout a student's journey. We provide campus connect social events, student registration chats, point of contact to provide one-one support and links to community and academic resources.

We are building capacity with a mentoring program, as well as course guidance.

Our Campus Benefits program connects students to businesses in the local area to develop student community.



## Workforce and Vocational Education

We work with TAFESA to support vocational students and provide connections

We connect with local jobs and skills networks to plan for and drive student achievement and plan for future workforce needs.

We can connect students to local jobs and have a range of employers who seek our graduates.



Building



# Partnerships

## University Partners

- part of our newly established advisory committee
- working towards supported courses
- South Australia Study Hubs

## Community Partners

- Foundation Barossa
- Barossa Young Ambassadors
- Enhance Barossa Mental Health
- Local Business- Campus Benefits Program

## School Partners

- Local Independent Schools
- Local Public Sector Schools

## Workforce Partners

- WorkSkil Australia
- Job and Skills Network Barossa & Mid North
- Max Employment Services

## Other Education Providers

- RCAGP
- Australian Food Training Centre
- AIE

# Student Engagement & Community





**Barossa Regional University Campus plays a crucial role in supporting the academic and personal development of students.**

**The campus's achievements and strategic goals align with the broader objectives of regional development and workforce enablement.**

**We Continue to strive to deliver educational programs that support our students and will ensure it remains a vital resource for students and the community.**





GREAT SOUTHERN  
UNIVERSITIES CENTRE

# OUR STUDY HUBS

**24/7 access**

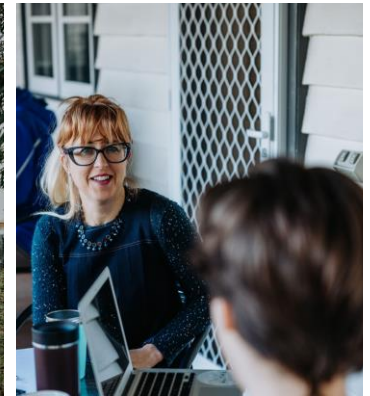
**Cert III and higher**

**100% FREE**

**1:1 orientations**

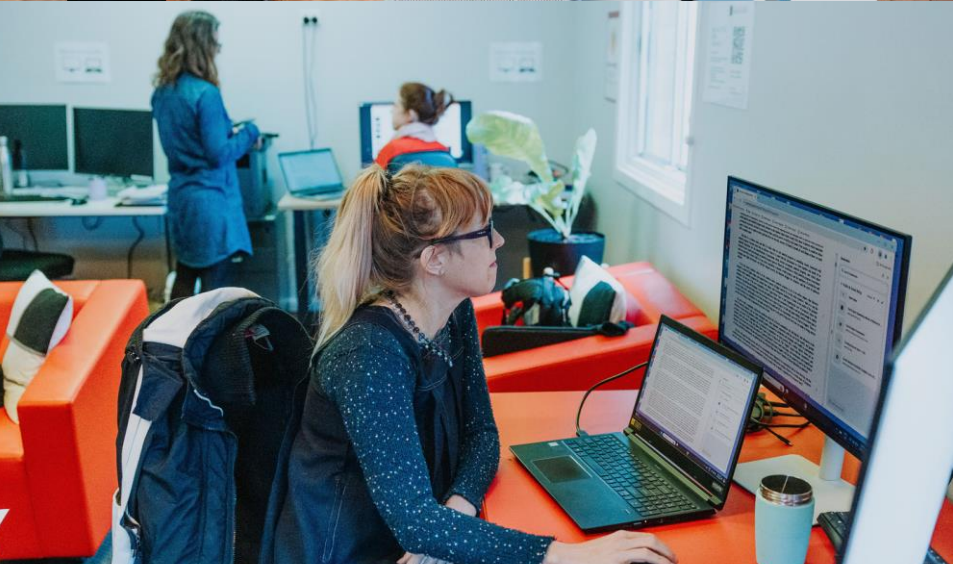
**High speed internet,  
free printing, computer facilities**

**Individual and collaborative study spaces**











# STUDENT SUCCESS SERVICES

**Student Support Team**

**1 : 1 Skills Sessions**

**Skills Development Workshops**

**Connecting students with their study provider's student services**

**Student gatherings**

# PARTNERING WITH UNIVERSITIES FOR STUDENT SUCCESS

- Service Level Agreements
- Workshops
- Resources
- Better on-ground support for local students
- Snowball effect



Western Australian Academy  
of Performing Arts (WAAPA)

Curtin University





## OUR FORMULA FOR SUCCESS

**Responsive to student needs. Agile and adaptive**



**24/7 access**



**Strong university partnerships. Seeking new ways to collaborate for better student outcomes**



**Employing the right fit**

**“... GSU AS ANOTHER STUDY SPACE, OR A PLATFORM TO SEEK SUPPORT AND ADVICE, WILL MONUMENTALLY CHANGE YOUR MOTIVATION AND OUTCOME TO SUCCEED...”**

**I NEVER THOUGHT I WOULD BE ABLE TO COMMENCE MY DEGREE ONLINE AND HAVE THE OUTCOMES IN MARKS THAT I HAVE HAD, AND I KNOW GSU HAS PLAYED A KEY ROLE.”**

**ELIJA - STUDYING EDUCATION AT UNI**





GREAT SOUTHERN  
UNIVERSITIES CENTRE

[gsunicentre.edu.au](http://gsunicentre.edu.au)

# Questions?

If you have any questions after today's session, please refer to the Frequently Asked Questions (FAQs) on the department's website:

[www.education.gov.au/regional-university-study-hubs](http://www.education.gov.au/regional-university-study-hubs)

If your question is not covered in the FAQs, please contact:

[Regional@education.gov.au](mailto:Regional@education.gov.au).

