



Australian Government  
Department of Education

# PRISMS MODERNISATION: TECHNICAL WORKING GROUP



# PRESENTATION OVERVIEW

- Introduction
- Engagement
- Implementation and Delivery
- PRISMS API functions and Design
- PRISMS API Features
- API Support
- Next steps



# SHARE

The image shows a Zoom meeting window with a presentation slide. The window title bar reads "PRISMS Modernisation Project Technical Working Group #3". The slide content includes the Australian Government Department of Education logo and the text "PRISMS MODERNISATION". A red arrow points to the "Need help?" icon in the Zoom toolbar.

PRISMS Modernisation Project Technical Working Group #3

Need help? ⓘ ⓘ Leave

Australian Government  
Department of Education

PRISMS MODERNISATION

▶ 🔊 🔇 LIVE 0:06 / 0:40 ⌨ ⚙️ ↗ Full

# ENGAGEMENT



# ENGAGEMENT

## BY WHAT MEANS

- Technical Working Group Webinars
- Software Vendor
- Other channels – specialised GovTeams groups
- PRISMS Modernisation website



# ENGAGEMENT

## AIM

- Continue to develop an understanding of the PRISMS API technical scope
- Provide progressive updates to the sector
- Participate in valuable technical information exchange between the sector and the department
- Work through operational challenges for implementation
- Provide timely feedback to questions



# PRISMS MODERNISATION WEBSITE

← → ↻ 🏠 <https://www.education.gov.au/prisms-modernisation-project> 🗂️ 🔍 ⌂ ☆ 🏠 🗂️ 🗂️ 🗂️ 🗂️ 🗂️

Home About Us Early Childhood Schooling Higher Education International Education Youth

## PRISMS Modernisation Project

- PRISMS Modernisation Project
- Frequently Asked Questions
- Project Technical Working Group
- Announcements
- Resources

Streamlining enrolments through the development and implementation of Application Programming Interface (APIs).

**On this page:**

- [Project Background](#)
- [Anticipated benefits of the PRISMS Modernisation Project](#)
- [What is currently happening in the PRISMS Modernisation Project?](#)
- [Getting the international education sector involved](#)
- [Engagement so far](#)
- [More information](#)

### Project Background

The Australian Government plans to invest \$17.3 million over two years (2022–2024) to modernise the Provider Registration and International Student Management System (PRISMS) in order to streamline enrolments for international students and Australian education providers.

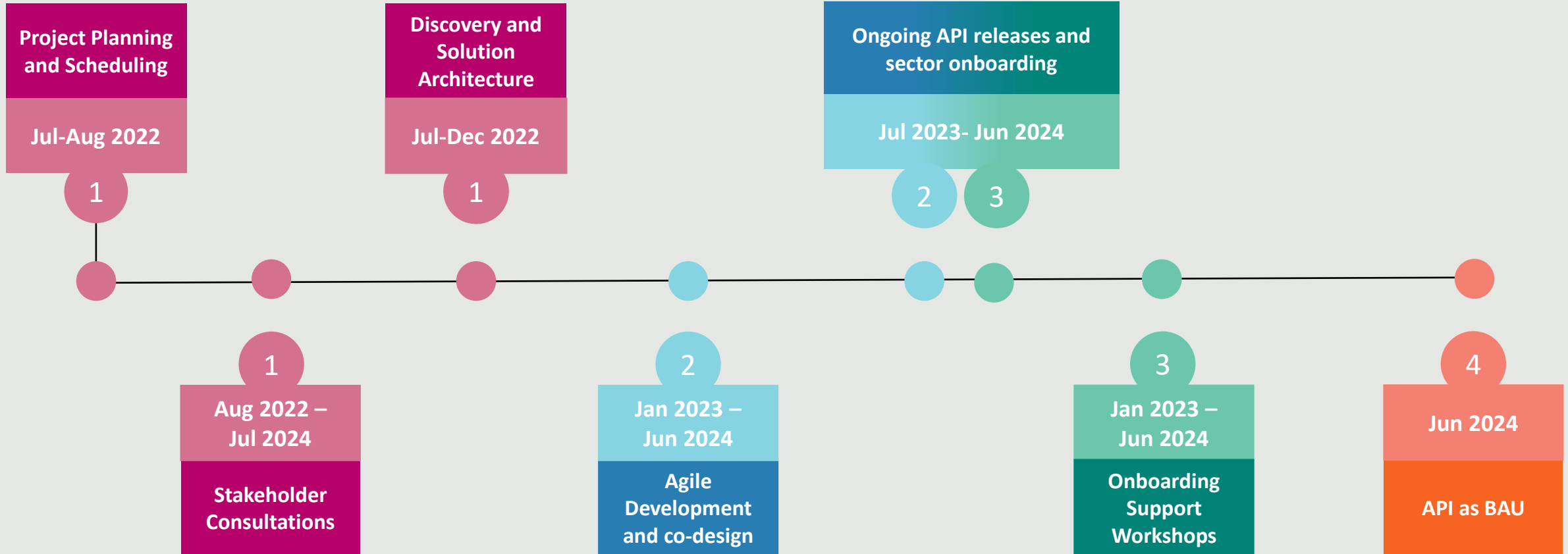
The modernisation solution will allow providers to integrate their own systems with the PRISMS application to submit their data directly to PRISMS. These changes will reduce double data handling for providers and provide seamless integration of business

# Implementation and Delivery





# IMPLEMENTATION PLAN



Project Phase 1	Project Phase 2	Project Phase 3	Project Phase 4
Establishment	Implementation	Transition	BAU

# PRISMS API

## Functions and Design



# PRISMS API FUNCTIONS: CoE Create functionality

- The first goal of this project is to allow providers to create approved CoEs in PRISMS from their admission management and student management software via APIs.



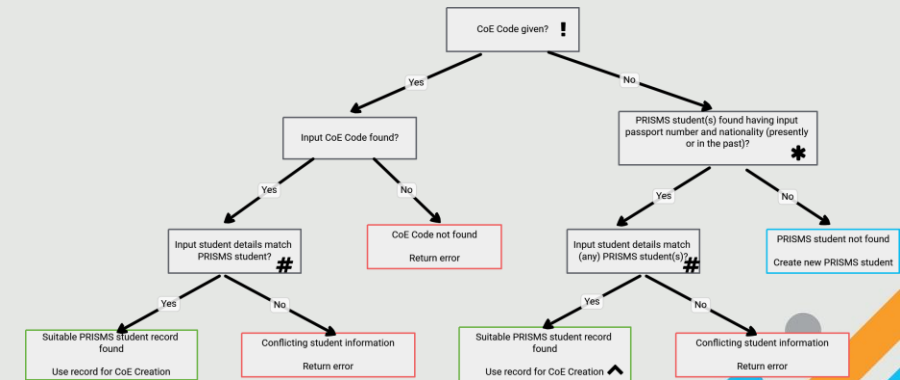
# CREATE COE API FUNCTION DESIGN: Features

1. Maintain existing CoE data requirements
2. Single endpoint call to create approved CoEs
3. Supporting reference value endpoints
4. Dependencies on client systems having certain PRISMS data e.g.,  
*Student details, CRICOS Course, Location, Enrolment Dates and Fees, Overseas Health Cover etc*
5. Automatic student identification
6. User Authentication & Authorisation



# CREATE COE API FUNCTION: Student Identification

1. Existing CoE code or passport number
2. Check for matching student details - First name, middle name, family name, gender, Country of birth etc in endpoint call to create approved CoEs
3. Where multiple student records are found, the latest created record verified

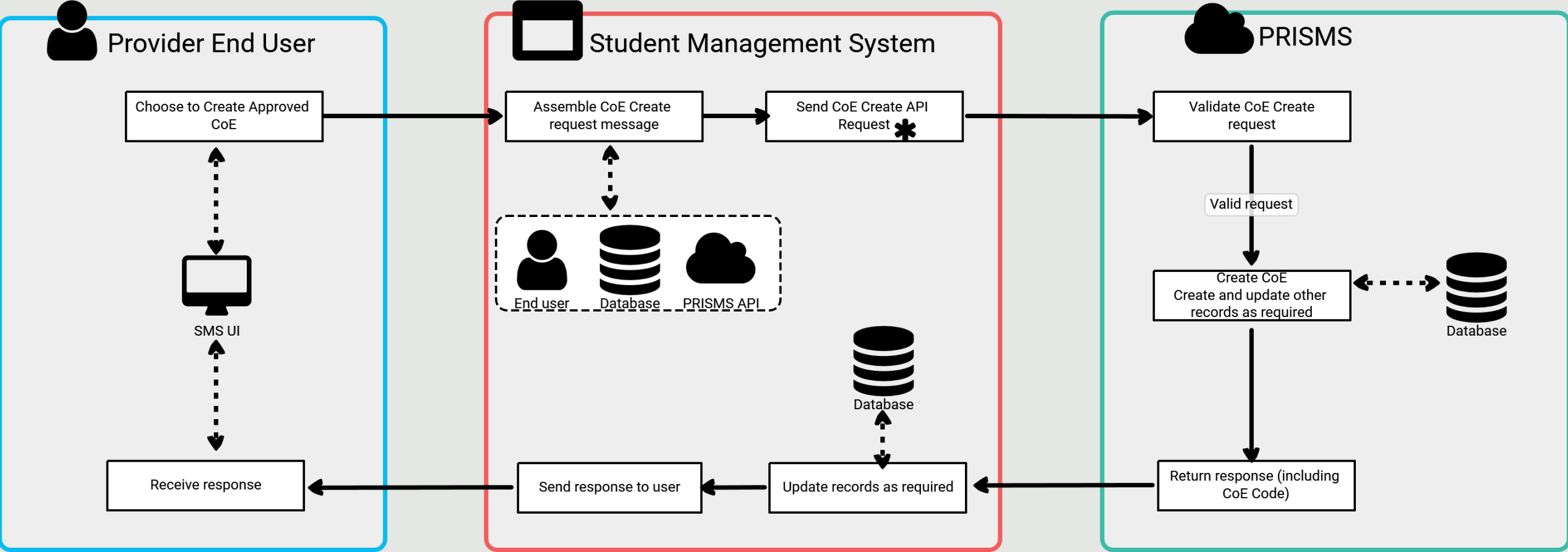


! CoE Create will support identification of students by previous CoE Code \* Passport numbers will be mandatory through the API

# Check for matching student details will check on the following: First Name, Middle Name, Family Name, Gender, Date of Birth, Country of Birth, Nationality. Student title will not be matched on

^ Where multiple student records are found, the latest created record verified by Home Affairs (if any) will be used

# CREATE COE API FUNCTION: API Interaction overview



\* Assumes end user has already been authenticated and has an active session



# PRISMS API: Future Functions

1. Generation of CoE Certificates
2. CoE Creation for under 18 students
3. Generation of accommodation and welfare arrangement letters
4. Creation of incomplete, saved or pending CoEs
5. Reporting of basic student course variations (SCVs)
6. Retrieval of PRISMS data to support CoE creation



# API Features





# API FEATURES: Overview

- REST based industry standards
- Secured
- Authentication and Authorisation
- Data Validation



# API FEATURES: Industry API Standards

The PRISMS Provider API will be REST based following industry standards:

- GET (read), POST (create), PUT (Update), DELETE operations
- Standard error codes
- Filtering, sorting, pagination
- API Versioning



# API FEATURES: API Security

The PRISMS Provider API will follow government API security standards

- Authentication and Authorisation
- Input Validation
- Rate Limiting
- Audit Logging
- Asynchronous where appropriate



# API FEATURES: Authentication

Authentication and authorisation approach based around some key concepts

- Alignment with Whole of Government approach and guidance
- Analysis of existing authentication models in place in the department with a focus on opportunities for alignment and re-use
- Leverage modern OpenID/Connect and OAuth2.0 flows.



# API FEATURES: Attended and unattended workflows

Legislative and business requirements for both attended and unattended flows

- Some flows will need to be triggered by a user with appropriate authorisation
- We will use PRISMS identity management as part of these flows
- Whether a call is attended or unattended will depend on the nature of the API call



# API FEATURES: API Authorisation

The PRISMS Provider API will support both provider user (attended) and provider organisation (unattended) authorisation.

The PRISMS Provider API will implement API Authorisation at a request level

Generally:

- Requests that will involve manipulation of data will require an authorised user to be authenticated on attended flows
- Requests to retrieve some types of data will be one by provider organisations using an unattended flow through their client system



# API FEATURES: Data Validation

Data will be validated with reference to existing PRISMS validation and business rules.

- Validated against core PRISMS validation and business rules
- Error messages returned
- Warnings will be available at a later date



# API FEATURES: PRISMS Errors

## PRISMS

You must correct the following errors:

- Proposed Start date cannot be less than or equal to course registered date

OK

Error attributes	Description	Mandatory?
<i>id</i>	Identifier of the specific error	Optional
<i>detail</i>	A human-readable explanation specific to this occurrence of the problem.	Mandatory
<i>code</i>	An application-specific error code	Mandatory
<i>source</i>	An object containing references to the source of the error, optionally including any of the following members: pointer: a JSON Pointer [RFC6901] to the associated entity in the request document [e.g. "/data" for a primary data object, or "/data/attributes/title" for a specific attribute]. parameter: a string indicating which URI query parameter caused the error	Optional
<i>source &gt; pointer</i>	JSON Pointer [RFC6901] to the associated entity in the request document [e.g. "/data" for a primary data object, or "/data/attributes/title" for a specific attribute].	Optional
<i>source &gt; parameter</i>	A string indicating which URI query parameter caused the error.	Optional



# API FEATURES: Warnings

**Course fee**

The approximate total course fee of \$AU0 varies from the estimated total cost recorded in PRISMS for this course (\$AU21675) by more than 50%. Are you sure that the approximate total course fee is correct?



# API SUPPORT



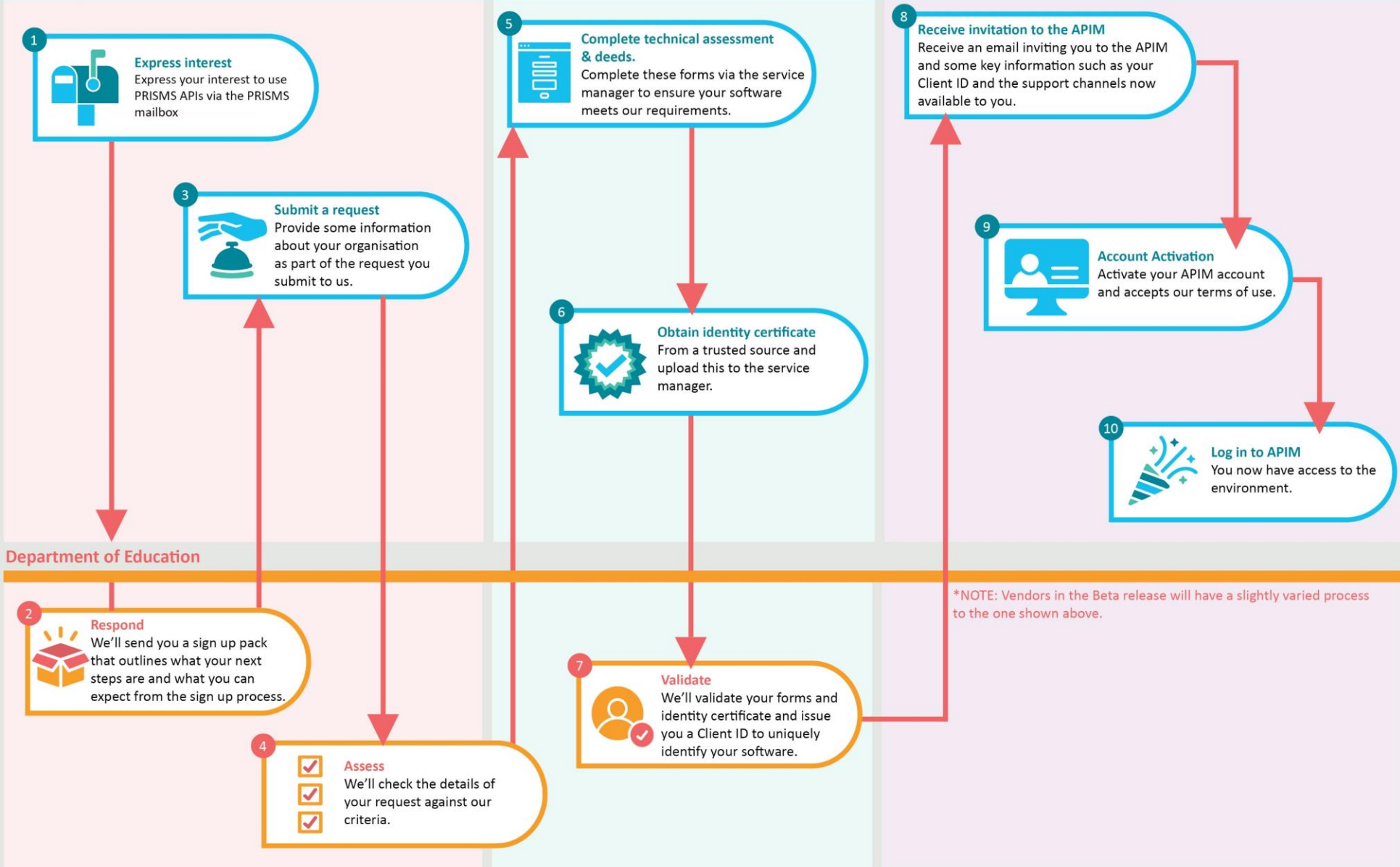
# Onboarding and Assessment of Vendors and Providers

Onboarding to PRISMS API consists of four sequential steps:

1. Indicate Interest / Sign-up
2. Set-up to Develop and test
3. Commence Developing and testing
4. On-board to production environment



## Vendor/Provider User



**WHAT'S NEXT?**



# What's next: Staging environment Beta release

- Beta release – second quarter of 2023-2024 August 2023
- Initial release –
- Scope – Test environment, API functionality, documentation, API portal etc
- Iterative future releases (with added functionality & API refinement)
- Sector communication and engagement (ongoing)



# QUESTIONS



**KEEP SHARING**

**[PRISMSAPI@education.gov.au](mailto:PRISMSAPI@education.gov.au)**

**<https://www.education.gov.au/prisms-modernisation-project>**





# CLOSING

